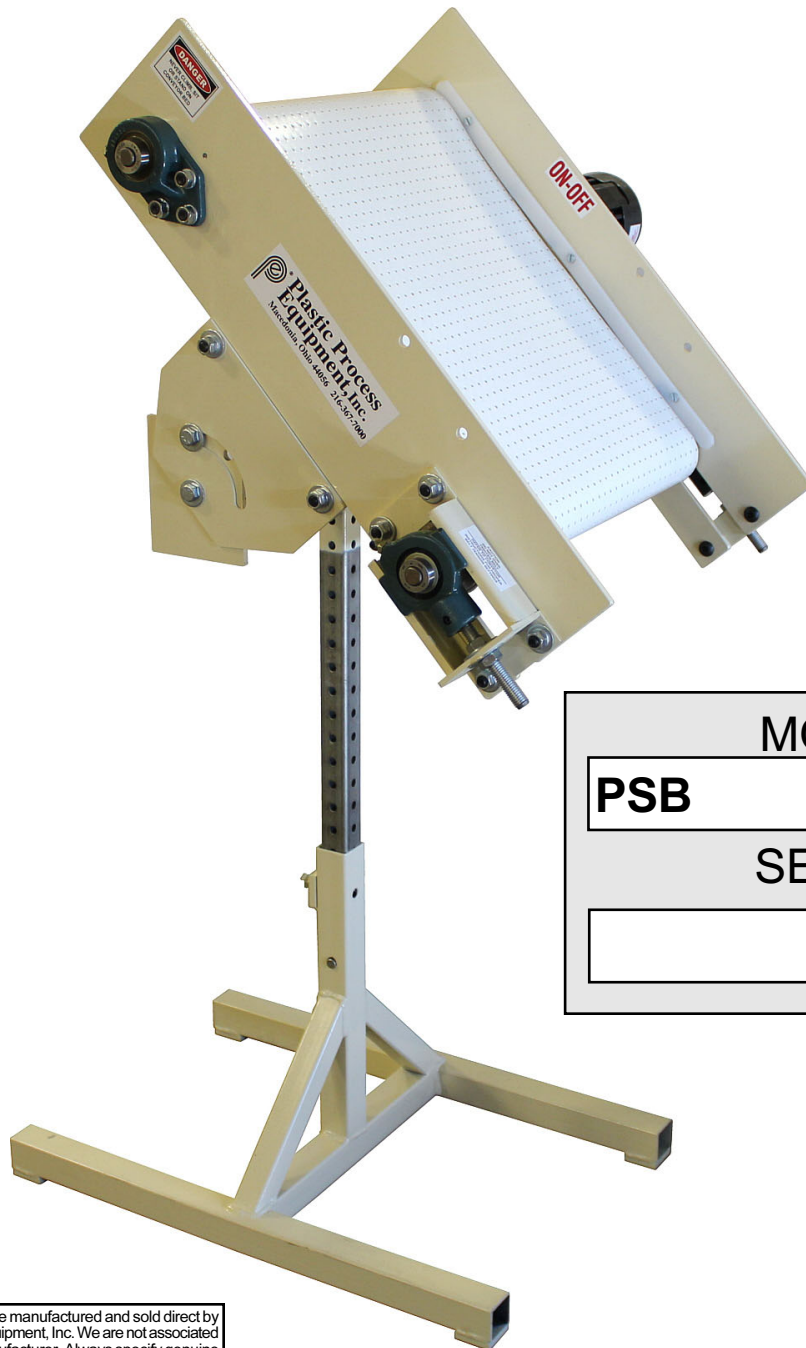




# INSTRUCTIONS FOR PSB SEPARATORS



MODEL NO.

PSB

SERIAL NO.

PPE Separators are manufactured and sold direct by Plastic Process Equipment, Inc. We are not associated with any other manufacturer. Always specify genuine PPE Separators! Do not accept substitutes.

Made in the U.S.A. by Plastic Process Equipment, Inc. © copyright 2024



**PLASTIC PROCESS EQUIPMENT, INC.**

**EAST**  
8303 CORPORATE PARK DRIVE  
MACEDONIA, OHIO 44056-2300  
216-367-7000 • FAX: 216-367-7022  
TOLL FREE: 800-321-0562

**WEST**  
6385 MONTESSOURI STREET  
LAS VEGAS, NEVADA 89113-1186  
702-433-6385 • FAX: 702-433-6388  
TOLL FREE: 800-258-8877

**www.ppe.com**  
e-mail: sales@ppe.com

**Toll Free: USA, Canada & Mexico**  
**800-362-0706**

Order Fax: 800-223-8305

Thank you for buying a separator from Plastic Process Equipment, Inc.

## RECEIVING

Please thoroughly inspect your separator and report any damage to the motor freight carrier before uncrating for set up. They are responsible for any damage incurred during transit.

## ATTENTION!!

**Please read through the entire booklet first.**

You must be trained and authorized by your employer in the proper installation operation, maintenance and set-up of your new equipment. ***Safety First Always!***

## CAUTION DURING USE AND OPERATION OF SEPARATOR

- Do not wear loose clothing or jewelry around the separator.
- Do not wear rings, necklaces, or jewelry.
- Long hair **must** be tied and netted.
- Keep all hands, arms, and fingers away from any moving parts except the separator belt surface.
- Never stand on the separator belt for any reason whatsoever.
- Do not operate any separator with the guards removed.
- Do not operate the separator with parts missing, removed, or in a disassembled state.
- Pay special attention to the ON-OFF switch location.
- Wear safety glasses if your company or process requires them.
- You must unplug the separator before performing any repairs or maintenance.
- If you are unsure about installation, operation, maintenance, or setup call PPE!

## ELECTRICAL

Always use a grounded 120 volt outlet and a suitable three wire **grounded** extension cord. All separators are equipped with a starter switch and an overload protection heater which has been properly sized for the drive motor.

## BELT TRACKING AND TENSION

All separators are thoroughly tested in our factory after final assembly. The belts are adjusted to track properly with the right amount of tension, however, some slight adjustments may be necessary during use. **CAUTION: DO NOT OVERTIGHTEN THE SEPARATOR BELT.** An overtightened belt will cause premature failure for your bearings, shafts, and, on some models, the drive unit.

## BELT TRACKING

First loosen the locking nut on each side of the separator (**see Figure 1**). With the separator operating, if the belt moves to the right, tighten the tension on the right take-up screw approximately 1/4 turn. Wait several minutes to allow the belt to drift and reposition itself on the rollers. Continue to adjust the appropriate take-up bolt until the belt tracks with the same space between the belt and frame on each side. **DO NOT OVERTIGHTEN THE SEPARATOR BELT!** If necessary, reset the belt tracking by loosening the opposite side. Once the belt tracking is complete, be sure to lock the take-up adjustment screws with the locking nut.

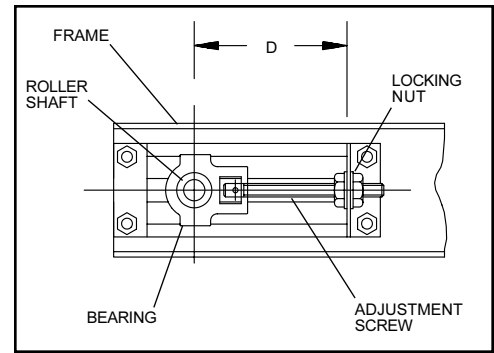


Figure 1

## WARNING DRIVE MOTOR

The standard drive motor is not designed for repeated start stop operation, if you turn the conveyor on and off more than 10 times per minute you damage the motor by overheating. There are special order motors available for start/stop operations, please consult the factory.

## BELT TENSION

For best results and longest life of the drive components, the belt should be run with the **LEAST** tension needed to transmit the load without slipping. If the belt is too loose, it will slip causing wear to the belt underside. **CAUTION: DO NOT OVERTIGHTEN THE SEPARATORS.** An overtightened belt will cause premature failure of your bearings, shafts and, on some models, the drive unit.

## LUBRICATION

PPE chain drive units use permanently lubricated drive chains that **do not** require lubrication. All bearings are permanently lubricated also, therefore we do not provide a grease fitting. Our experience has shown conveyor users tend to over grease bearings to the point where grease works it's way between the rollers and belts causing serious problems of contamination and belt slippage.

**CAUTION:**  
DO NOT ALLOW LUBRICATION TO GET  
ON THE UNDERSIDE OF THE BELT.

**CAUTION:**  
BEARINGS SHOULD NOT RUN CONTINUOUS  
AT TEMPERATURES OVER 200°F  
AND SHOULD NEVER EXCEED 225°F  
FOR INTERMITTENT OPERATIONS.

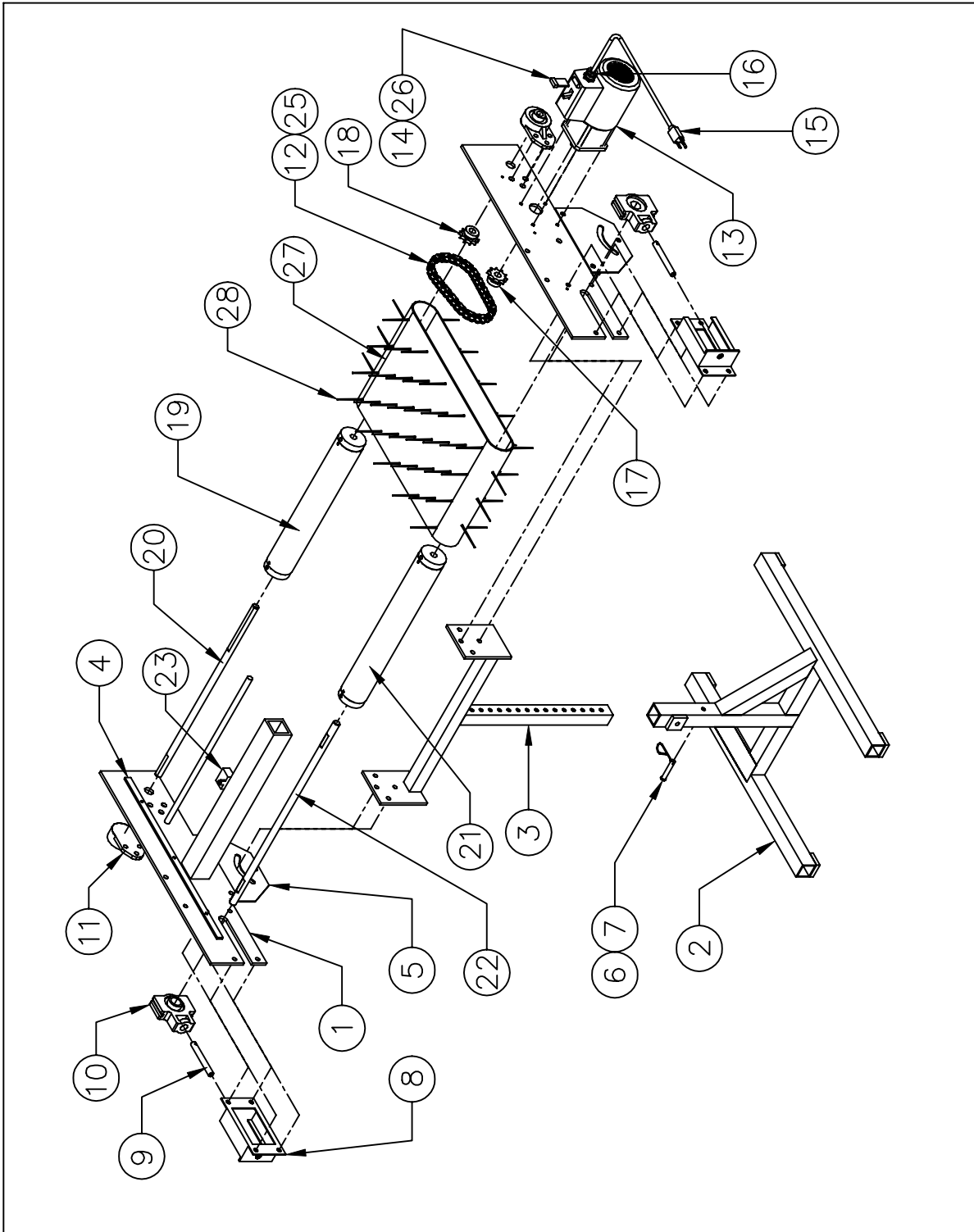
## WARRANTY

All PPE Conveyors have a full **one year warranty**. This warranty doesn't include conveyor belts because they are subject to excessive wear damage and abuse by the user. This Warranty will not extend to goods subjected to misuse, abuse, neglect, accident or improper installation or maintenance, or products or goods which have been altered, modified or repaired by anyone other than seller or its authorized and approved representatives.

## MODIFICATIONS:

**WARNING!** Do not modify this machine in any way. Modifications of any kind not only void any warranty, but it can cause serious injury or damage to the equipment and/or personnel.

# PSB SEPARATOR PARTS



## PLASTIC PROCESS EQUIPMENT, INC.

8303 Corporate Park Drive, Macedonia (CLEVELAND), OHIO 44056  
(216) 367-7000 TOLL FREE: 800-321-0562 FAX (216) 367-7022 ORDER FAX: 800-223-8305 EMAIL: SALES@PPE.COM

6385 Montessouri Street, Las Vegas, Nevada 89113  
(702) 433-6385 TOLL FREE: 800-258-8877  
FAX: (702) 433-6388

11218 Challenger Ave., Odessa, FL 33556  
(727) 834-8888 TOLL FREE: 800-282-6783  
FAX: (727) 834-8873

# PSB CONVEYOR PARTS LIST

ID NUMBER	CURRENT PART NO	DESCRIPTION	11/08/24	QTY
1	D-3145-(WIDTH)	ALUMINUM FRAME		1
2	C-3079	LOWER STAND UNIT		1
3	C-6515-12	UPPER STAND 12"		1
3	C-6515-18	UPPER STAND 18"		1
3	C-6515-24	UPPER STAND 24"		1
3	C-6515-6	UPPER SEPARATOR STAND 6"		1
4	B-3141	NYLON WEAR STRIPS		2
5	B-3166	ANGLE TILT PLATE		2
6	98335A054	.073 COTTER PIN FOR STAND		1
7	92390A223	SS CLEVIS PIN FOR STAND 5/16 DIA		1
8	B-3002	SHORT BEARING BRACKET		2
9	A-1420-4	TAKE UP ADJ BOLT LONG		2
10	TU-250	TU-250 X 5/8" TAKEUP BEARING		2
11	FB-10	FB-10 X 5/8 DRIVE END BEARING		2
12	40CK	40 CHAIN, HALF LINK, MASTER LINK KIT		1.5
13	455	455 1/15HP BODINE GEARMOTOR		1
14	CR101Y11	SWITCH WITH PILOT LIGHT		1
15	K5152	K5152 12' POWER CORD		1
16	3201	3201 NON METALLIC CORD SAVERS		2
17	H40B10X1/2	4010 X 1/2" HARDENED SPROCKET		1
18	H40B10X5/8	4010 X 5/8" HARDENED SPROCKET		1
19	B-2642-12	DRIVE ROLLER 12" WIDE		1
19	B-2642-18	DRIVE ROLLER 18"		1
19	B-2642-24	DRIVE ROLLER 24"		1
19	B-2642-6	DRIVE ROLLER 6" WIDE		1
20	B-2643-6DR	SHAFT 6" DRIVE		1
20	B-2643-12DR	SHAFT 12" DRIVE		1
20	B-2643-18DR	SHAFT 18" DRIVE		1
20	B-2643-24DR	SHAFT 24" DRIVE		1
21	B-2645-6	TAKE-UP ROLLER 6" WIDE		1
21	B-2645-12	IDLER ROLLER 12" WIDE		1
21	B-2645-18	IDLER ROLLER 18" WIDE		1
21	B-2645-24	IDLER ROLLER 24" WIDE		1
22	B-2643-6TU	SHAFT 6" TAKEUP		1
22	B-2643-12TU	SHAFT 12" TAKEUP		1
22	B-2643-18TU	SHAFT 18" TAKEUP		1
22	B-2643-24TU	SHAFT 24" TAKEUP		1
23	49400081	CAPACITOR W/MOUNTING BOX 0984		1
26	QOA139	HEATER/FUSE FOR 455 MOTOR		1
27	BELT	SEE BELT SHEET		1
28	1080	SEPARATOR PINS PACK OF 100		1