



INSTRUCTIONS CONVEYORS & SEPARATORS



Bottle & Parts



Separators



Inclined & Infeed Combo



Vee-Guide Tracking



FIC Conveyor



Granulator Feed



Inclined



Parts Conveyor

MODEL NO.
<input type="text"/>
SERIAL NO.
<input type="text"/>

PPE Conveyors are manufactured and sold direct by Plastic Process Equipment, Inc. We are not associated with any other manufacturer. Always specify genuine PPE conveyors! Do not accept substitutes.

Made in the U.S.A. by Plastic Process Equipment, Inc. © copyright 2024



PLASTIC PROCESS EQUIPMENT, INC.

8303 CORPORATE PARK DRIVE
MACEDONIA, OHIO 44056-2300
216-367-7000 • FAX: 216-367-7022
TOLL FREE: 800-321-0562

6385 MONTESSOURI STREET
LAS VEGAS, NEVADA 89113-1186
702-433-6385 • FAX: 702-433-6388
TOLL FREE: 800-258-8877

www.ppe.com

e-mail: sales@ppe.com

Toll Free: USA, Canada & Mexico

800-362-0706

Order Fax: 800-223-8305

Thank you for purchasing a conveyor or separator from Plastic Process Equipment, Inc. These instructions are intended as a guide for your new product. If you have any additional questions, contact PPE at 800-321-0562.

RECEIVING

Thoroughly inspect your new conveyor or separator before unpacking it for set up. Report any damage to the motor freight carrier; they are responsible for damages incurred during transit.

ATTENTION!!

Please read through the entire booklet first.

You must be trained and authorized by your employer in the proper installation operation, maintenance and set-up of your new equipment. **Safety First Always!**

ELECTRICAL

All conveyors and separators are equipped with a starter switch and an overload protection heater. A grounded 120 volt outlet and a three wire grounded extension cord must be used at all times.

The On/Off switches on some models are resettable, should the switch get overloaded for some reason it may be necessary to reset it before the conveyor will run again. See switch cover for reset instructions.

WARNING DRIVE MOTOR

The standard 1/6hp 655 drive motor is not designed for repeated start stop operation, if you turn the conveyor on and off more than 10 times per hour you damage the motor by overheating. There are special order motors available for start/stop operations, please consult the factory.

CAUTION DURING USE AND OPERATION OF CONVEYORS OR SEPARATORS

- Do not wear loose clothing or jewelry around the conveyor.
- Do not wear rings, necklaces, or jewelry.
- Long hair **must** be tied and netted.
- Keep all hands, arms, and fingers away from any moving parts except the conveyor belt surface.
- Never stand on the conveyor belt for any reason whatsoever.
- Do not operate any conveyor with the guards removed.
- Do not operate the conveyor with parts missing, removed, or in a disassembled state.
- Pay special attention to the ON-OFF switch location.
- Wear safety glasses if your company or process requires them.
- You must unplug the conveyor before performing any repairs or maintenance.
- If you are unsure about installation, operation, maintenance, or setup call PPE!

TYPES OF CONVEYORS

PPE carries both V-Belt and non V-Belt Conveyors. The easiest way to tell if your conveyor is a V-Belt is by the serial number. If there is a "V" in the serial number your conveyor is a V-Belt. **EXAMPLE:** the serial number PC1812V251439 is a conveyor with the V-Belt system (note the V in the serial number). If the serial number on your conveyor has an **R** or an **A** following the **V**, your conveyor has direct drive. **EXAMPLE:** PC 182VR251439 is a direct drive conveyor.

BELT TRACKING AND TENSION

All conveyors and separators are thoroughly tested in our factory after final assembly. Although the belts are adjusted to track properly with the right amount of tension, some adjustments may be necessary during use. For best results and longevity of the drive components, the belt should be run with the **LEAST** tension needed to transport the load without slipping. If the belt is too loose, it will slip causing wear to the belt's underside. **CAUTION: DO NOT OVERTIGHTEN THE CONVEYOR BELT.** An overtightened belt will cause premature failure of your bearings, shafts and, on some models, the drive unit.

BELT TRACKING: THE V-BELT STYLE

The V-Belt tracking system keeps your belt centered and tracking properly. No adjustment should be necessary if both take up bolts are adjusted the same amount during belt tension adjustment. To check the tracking of your belt, measure the take up bolts on both sides of the conveyor. The distance between the center of the roller shaft and the bracket behind the locking nut (**see Figure 1**) should be the same for both bolts.

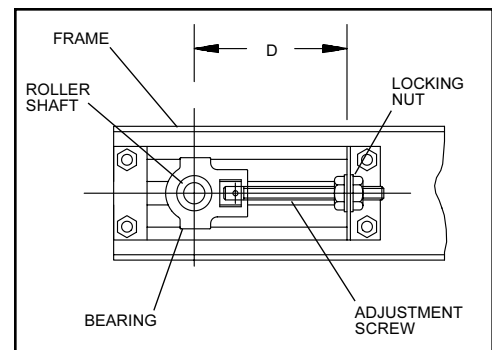
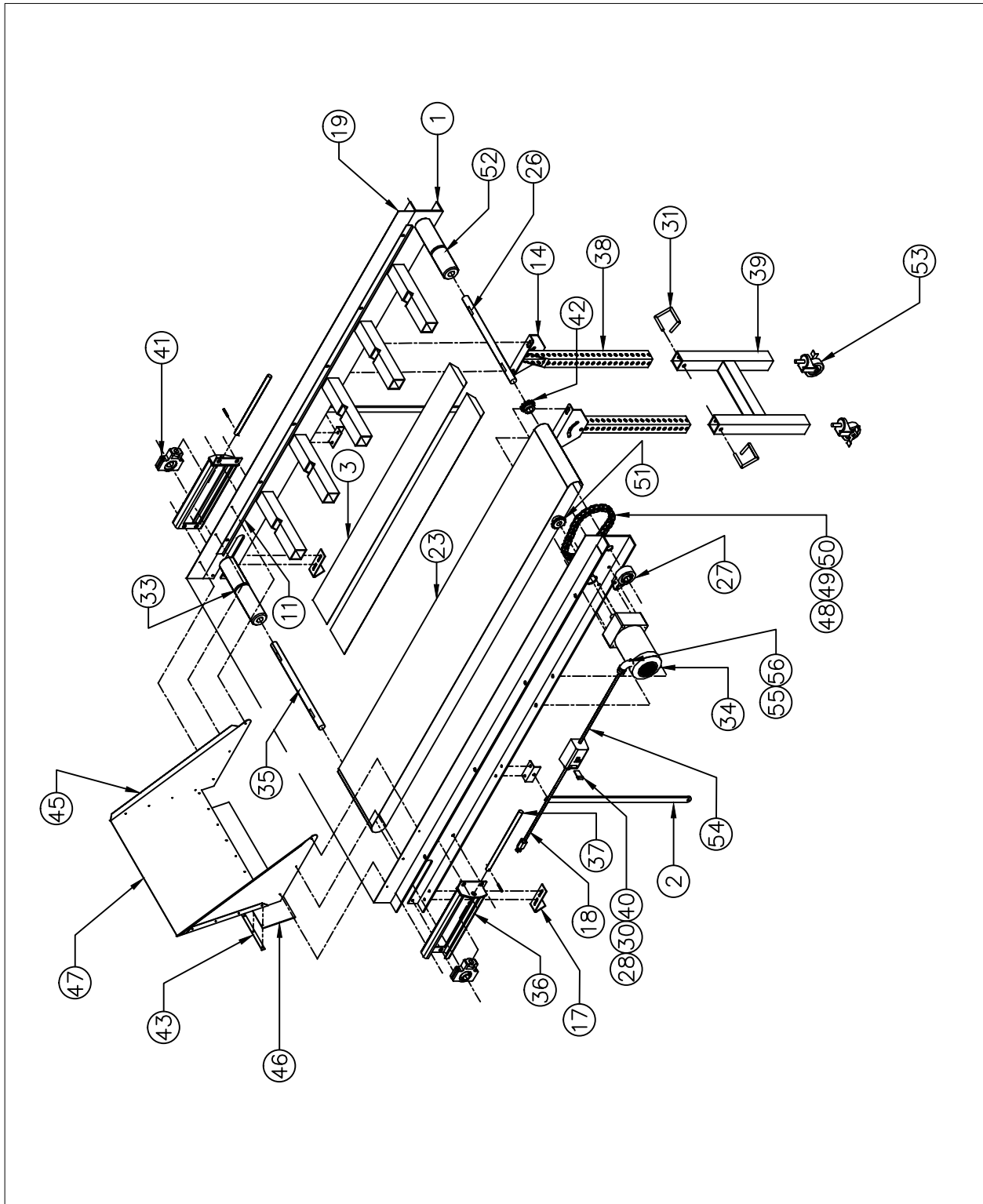


Figure 1

PCI CONVEYOR PARTS

12" 18" & 24" BODINE ONLY *



PLASTIC PROCESS EQUIPMENT, INC.

8303 Corporate Park Drive, Macedonia (CLEVELAND), OHIO 44056
 (216) 367-7000 TOLL FREE: 800-321-0562 FAX (216) 367-7022 ORDER FAX: 800-223-8305 EMAIL: SALES@PPE.COM

6385 Montessouri Street, Las Vegas, Nevada 89113
 (702) 433-6385 TOLL FREE: 800-258-8877
 FAX: (702) 433-6388

11218 Challenger Ave., Odessa, FL 33556
 (727) 834-8888 TOLL FREE: 800-282-6783
 FAX: (727) 834-8873

PCI CONVEYOR BODINE DRIVE PARTS

11/08/24

ID	QTY	P/N	DESCRIPTION	UOM
OPTIONAL	1	0791B	0791B BODINE VARIABLE SPEED CONTROL W/12FT CORD	EA
OPTIONAL	1	C-6909-3	VARIABLE SPEED MOUNTING BRACKET 45° FOR MM23101C	EA
OPTIONAL	1	5044	1/4 HP DC BODINE BUILT BEFORE 7/1/2010	EA
OPTIONAL	1	MDL-3	FUSE 3A/250V FOR 5044 MOTOR	EA
OPTIONAL	1	1060	1/4 HP DC MOTOR BUILT AFTER 7/1/2010	EA
OPTIONAL	1	MDL-2	FUSE 2A/250V FOR 6183 & 1060 MOTOR	EA
OPTIONAL	1	A-5888	NEW STYLE "F" BRACKET (SET)	SET
OPTIONAL	1	TAD-12	DISCHARGE TRAY B-1678-12	EA
OPTIONAL	1	TAD-18	DISCHARGE TRAY B-1678-18	EA
OPTIONAL	1	TAD-24	DISCHARGE TRAY B-1678-24	EA
1	1	D-7997	PCI FRAME	EA
2	2	B-1614-3	LEG SUPPORT BAR FOR SCI (SET)	EA
3		B-1285	BEDDING	EA
11	1	B-1954-92	ANGLE BELT STRIPS S/S (SET) 92"	SET
14	1	B-1654	LEG MOUNTING BRACKET POWERCOATED	EA
17	2	A-1274	INCLINED FEET	EA
18	1	K5152	K5152 12' POWER CORD	EA
19	1	B-8112-5	SIDE RAIL FOR PCI/PCIS 5' (SET) INCLUDING ANODIZE	EA
19	1	B-8112-6	SIDE RAIL FOR PCI/PCIS 6' (SET)	EA
19	1	B-8112-7	SIDE RAIL FOR PCI/PCIS 7' (SET)	EA
19	1	B-8112-8	SIDE RAIL FOR PCI/PCIS 8' (SET)	EA
19	1	B-8112-A-10	SIDE RAIL FOR PCI/PCIS 10' (SET) INCLUDES EXTENSIONS	EA
23	1	BELT	BELT	EA
26	1	B-6819-12	1" DRIVE SHAFT PC BCP FT 12"	EA
26	1	B-6819-18	1" DRIVE SHAFT PC BCP FT 18"	EA
26	1	B-6819-24	1" DRIVE SHAFT PC BCP FT 24"	EA
27	2	FB16X1	FIXED BEARING	EA
28	1	CR101Y11	SWITCH WITH PILOT LIGHT	EA
30	1	QOA578	HEATER/FUSE FOR 655 MOTOR	EA
31	2	T092	LOCK PIN	EA
33	1	B-5578-12	VEE GROOVE ROLLER 12"	EA
33	1	B-5578-18	VEE GROOVE ROLLER 18"	EA
33	1	B-5578-24	VEE GROOVE ROLLER 24"	EA
34	1	655	655 1/6HP AC BODINE GEARMOTOR	EA
35	1	B-5620-12	IDLER SHAFT 12"	EA
35	1	B-5620-18	IDLER SHAFT 18"	EA
35	1	B-5620-24	IDLER SHAFT 24"	EA
36	2	C-5582	1" TAKEUP BRACKET W/PAINT	EA
37	2	C-5582B	ADJ BOLT FOR TAKE UP BRACKET 12"	EA
38	2	A-7994	UNISTRUT STAND EXTENSION (GALV) 34"	EA
38	2	A-4705	UNISTRUT STAND EXTENSION GALVANIZED 22"	EA
38	2	A-4703	UNISTRUT STAND EXTENSION (GALV) 36"	EA
39	1	A-7995-1612	UNISTRUT STAND BOTTOM 12" WIDE	EA
39	1	A-7995-1618	UNISTRUT STAND BOTTOM 18" WIDE	EA
39	1	A-7995-1624	UNISTRUT STAND BOTTOM 24" WIDE	EA
39	1	A-7995-2612	UNISTRUT STAND BOTTOM 12" WIDE	EA
39	1	A-7995-2618	UNISTRUT STAND BOTTOM 18" WIDE	EA
39	1	A-7995-2624	UNISTRUT STAND BOTTOM 24" WIDE	EA
39	1	A-7995-3212	UNISTRUT STAND BOTTOM 12" WIDE	EA
39	1	A-7995-3218	UNISTRUT STAND BOTTOM 18" WIDE	EA
39	1	A-7995-3224	UNISTRUT STAND BOTTOM 24" WIDE	EA
40	1	S2112	STRAIN RELIEF FOR ELECTRIC CORD	EA
41	2	TU250X1	TAKE-UP BEARING	EA
42	1	H40B12X1	4012 X 1" HARDENED SPROCKET DRIVEN	EA
43	1	A-6434-12	FLAPPER STRIP 12"	EA
43	1	A-6434-18	FLAPPER STRIP 18"	EA
43	1	A-6434-24	FLAPPER STRIP 24"	EA
45	1	A-6432	ALUMINUM HOPPER SIDES (SET)	EA
46	1	A-6435-12	FLAPPER BELT 12" FOR SI	EA
46	1	A-6435-18	FLAPPER BELT 18" FOR SI	EA
46	1	A-6435-24	FLAPPER BELT 24" FOR SI	EA
47	1	A-6433-12	ALUMINUM HOPPER FRONT 12" (INCLUDING ANODIZE)	EA
47	1	A-6433-18	ALUMINUM HOPPER FRONT 18" (INCLUDING ANODIZE)	EA
47	1	A-6433-24	ALUMINUM HOPPER FRONT 24"	EA
48	1.5	40C	#40 DRIVE CHAIN PER FT	EA
50	1	40MCL	40 MASTER CONNECTOR LINK	EA
51	1	H40B12X3/4	4012 X 3/4 HARDENED SPROCKET DRIVE	EA
52	1	A-6821-12N	V-GR DR ROLLER 1" SHAFT PC/PCS BODINE KNURLED	EA
52	1	A-6821-18N	V-GR DR ROLLER 1" SHAFT PC/PCS BODINE KNURLED	EA
52	1	A-6821-24N	V-GR DR ROLLER 1" SHAFT PC/PCS BODINE KNURLED	EA
53	2	CW4	CASTERS WITH LOCK	EA
54	1	10101G	3/8" SEALTITE HOSE 14" LONG	EA
55	1	ST-38	APPLETON CONNECTOR STRAIGHT	EA
56	1	ST-9038	SEAL TITE FITTINGS 90 DEG	EA
57		BL-50	1/2" TIGER GRIPS	EA
58		98330A280	LEG CLEVIS PIN 7/16 dia	EA
59		90149A032	HAIR PIN	EA
60	1	0984	JUNCTION BOX FOR BODINE MOTOR	EA

SEE BELT SHEET FOR BELTS