

INSTRUCTIONS

FOR

HL-3 HOPPER LOADER



PPE Hopper Loaders are manufactured and sold direct by Plastic Process Equipment, Inc. We are not associated with any other manufacturer. Always specify genuine PPE Hopper Loaders! Do not accept substitutes.

MODEL NO.
HL-3
SERIAL NO.

Made in the U.S.A. by Plastic Process Equipment, Inc. © copyright 2019



PLASTIC PROCESS EQUIPMENT, INC.

www.ppe.com • e-mail: sales@ppe.com

PPE WEST

6385 Montessouri Street, Las Vegas, Nevada 89113
702-433-6385 • 800-258-8877 • Fax: 702-433-6388

PPE SOUTH

11218 Challenger Avenue, Odessa, Florida 33556
727-834-8888 • 800-282-6783 • Fax: 727-834-8873

8303 CORPORATE PARK DRIVE, MACEDONIA (Cleveland), OHIO 44056, USA

216-367-7000 • Toll Free: 800-321-0562 • Fax: 216-367-7022 • Order Fax: 800-223-8305

Toll Free: USA, Canada & Mexico
800-362-0706

RECEIVING

Please thoroughly inspect your HL-3 Hopper Loader and report any damage to the motor freight carrier before uncrating for setup. They are responsible for any damage incurred during transit. Make note of model and serial numbers. These numbers must be used when ordering parts or accessories from PPE.

INTRODUCTION

The PPE model HL-3 Hopper Loader is a self-contained vacuum conveying system. It is designed to keep your material feed hopper full during operation. The unit will cycle loading and dumping material into the hopper until the hopper is full. It will then wait until the material level drops below the dump valve, at which point it will cycle again until the hopper is full. The load time can be varied to provide optimum performance in virtually all conditions. The HL-3 contains a diaphragm filter which may require cleaning or changing if the material contains a large amount of very fine particles. This filter should be checked every 8 hours of use. Do not use with powders.

ELECTRICAL

The HL-3 Hopper Loader comes wired for 120/60/1 power. Always use a **grounded** 120 volt outlet. If you must use an extension cord, ensure that the extension cord's rating is of the proper size. Failure to do so could cause a low voltage condition and premature failure of the motor. The HL-3 Hopper Loader is equipped with a circuit breaker instead of a replaceable fuse. The reset button is located on the side of the electrical enclosure. **NO FUSE TO LOSE!**

INSTALLATION

The HL-3 Hopper Loader must be mounted on a flat horizontal surface. It is usually fastened to the cover of the material feed hopper. **Precautions must be taken to prohibit the fasteners from loosening and falling into the feed throat (i.e.: nylok nuts, lok-tite, etc.).** It requires a 9" dia. hole in your hopper lid. The unit must be mounted so that the discharge counterweight valve swings without hitting anything. The counterweight has been adjusted at the factory and should not require any readjustments. The feed probe is secured to the feed hose with the supplied hose clamps. The other end of the hose is connected to the inlet tube located on the loader unit. A ground wire must be installed inside the feed hose to make a good connection between the feed probe and the loader unit. We suggest you strip 1-1/2" at each end and pinch the stripped ends between the feed hose and the mounting tubes it slides over. **Failure to connect the ground wire can cause excessive static buildup and can result in possible static shock and damage the unit.** When the HL-3 Hopper Loader is in operation the feed hose should not have any sags or goose-necks, like the trap under a sink. If the hose sags, when the unit shuts off the material in the hose will fall to the bottom of the sag and can plug the feed hose and restrict suction. When inserting the feed probe into your material gylord, do not jam the probe in! Insert the probe gently until it is about 1/4 to 1/3 submersed. When the unit is turned on, the probe will pull itself toward the bottom of the gylord.

SETTING THE UNIT

After the unit has been installed and grounded, plug in the power cord and move the "LOAD TIME" potentiometer to the full "MIN" position. Next move the power switch to the "ON" position. The red "POWER" and amber "MOTOR ON" lights should illuminate and the unit should begin to cycle. For optimum performance the unit should run just long enough to fill itself. A full unit is indicated by material blockage in the feed hose and a higher pitched motor sound. If the unit is allowed to run after it is full, performance will decrease. The load time can be adjusted from 15 seconds to 90 seconds (Note: these are approximate times and may vary by a few seconds). In general, longer load times will be needed for: longer distances, heavier materials, and increased amounts of regrind.

Your PPE HL-3 Hopper Loader was designed to operate on the **ON DEMAND** principal. The "MOTOR ON" light indicates that the unit is in its loading cycle and should be conveying material up to the loader. When your machine material hopper is full the unit will sense this because the loader dump valve will remain held open by the presence of your material. As long as the dump valve remains open the unit will not cycle. As the machine hopper material level lowers, the dump valve will freely swing closed and the loader will begin to cycle again.

MAINTENANCE

The HL-3 Hopper Loader is a filtered unit. There is a diaphragm type filter located between the top and bottom halves of the loader housing. This filter should be checked often and cleaned as necessary. The filter can be cleaned by blasting it with an air gun, or vacuuming it. Extra filters are available from PPE. A dirty filter greatly reduces material flow and may cause the vacuum motor to strain and/or fail.

The motor brushes should be inspected and/or replaced 300 hours of use, for example, if your unit is set to cycle on for 15 seconds out of every minute and it run for 8 hours a day, you should inspect the brushes every 5-6 months. The replacement brushes should be checked and/or replaced every 160 hours of use. **WARNING:** the brushes should be changed BEFORE the brush stunt touches the commutator. On reassembly and handling, the lead wires must be kept away from rotating parts and motor frame.

To achieve best performance, the new brushes should be seated on the commutator before full rated voltage is applied. After brush change, apply 50% to 75% of rated voltage for thirty minutes to accomplish this seating. The motor will return to full performance after thirty to forty-five minutes of running at full rated voltage. The motor must not be run with the vacuum air inlet sealed off. **DIRECT APPLICATION OF FULL RATED VOLTAGE AFTER CHANGING BRUSHES WILL CAUSE ARCING, COMMUTATOR PITTING, AND REDUCED OVERALL LIFE.** If reduced voltage is unavailable, connecting two motors of similar rating in series for thirty minutes will accomplish the brush seating.

	PLASTIC PROCESS EQUIPMENT, INC.		www.ppe.com • e-mail: sales@ppe.com
	PPE WEST 6385 Montessouri Street, Las Vegas, Nevada 89113 702-433-6385 • 800-258-8877 • Fax: 702-433-6388	PPE SOUTH 11218 Challenger Avenue, Odessa, Florida 33556 727-834-8888 • 800-282-6783 • Fax: 727-834-8873	
	8303 CORPORATE PARK DRIVE, MACEDONIA (Cleveland), OHIO 44056, USA		Toll Free: USA, Canada & Mexico 800-362-0706

216-367-7000 • Toll Free: 800-321-0562 • Fax: 216-367-7022 • Order Fax: 800-223-8305

WARRANTY

All PPE machinery is warranted to be free of defective material and workmanship for a minimum period of 1 YEAR from date of sale. Some machinery components may carry longer warranties per our suppliers policies which are passed on to our customers (i.e. our drier compressors, conveyor motors, etc.).



WARNING
STATIC SHOCK HAZARD



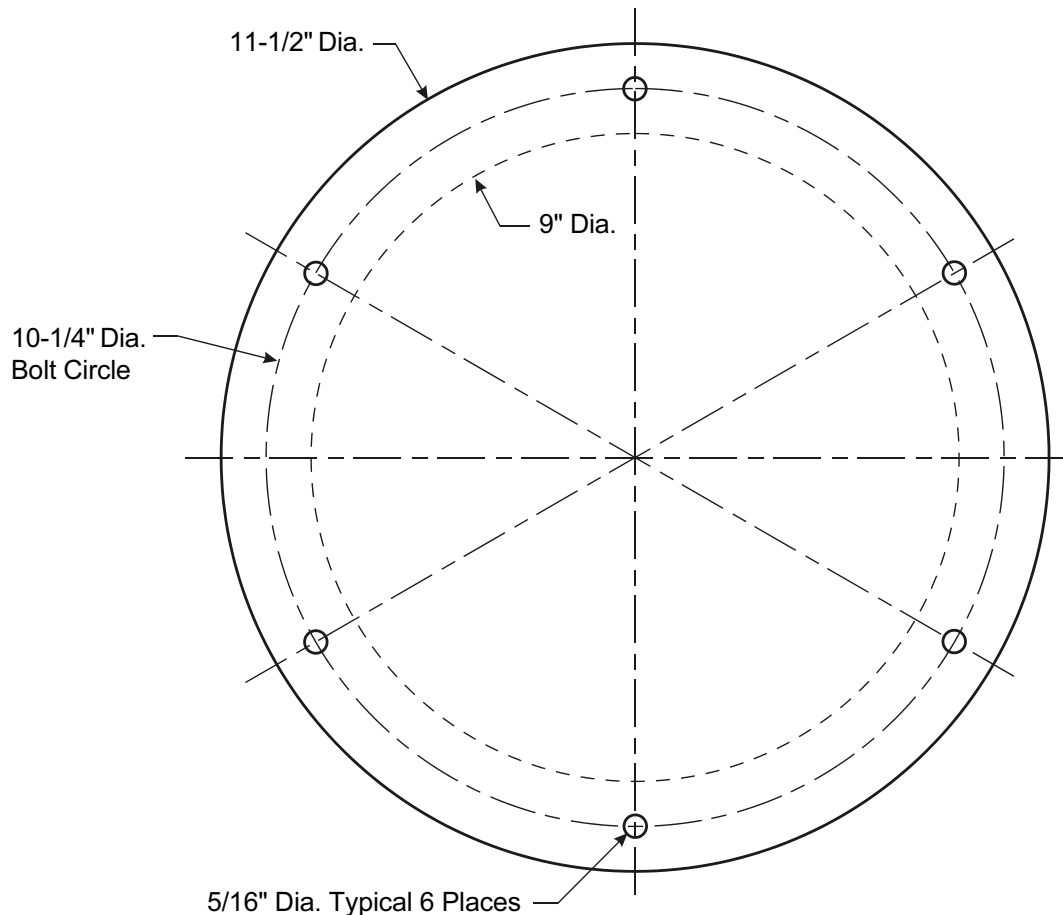
All PPE Vacuum Hopper Loaders are supplied with a vacuum hose that contains a ground wire to help control static electricity for user safety. We also recommend you install an extra static ground wire on your HL Series Vacuum Hopper Loader unit. The ground wire should be run **INSIDE** your feed tube and connect the metal probe to the hopper loader frame. This will help to dissipate the static charge generated by some plastics as they are conveyed up the tube. You can use a standard 18 gauge electrical wire, strip the ends about 1-1/2" and pinch them between the plastic feed hose and the metal tubes that it mounts over, then clamp it securely with the supplied hose clamps. Do not use plastic suction probes!



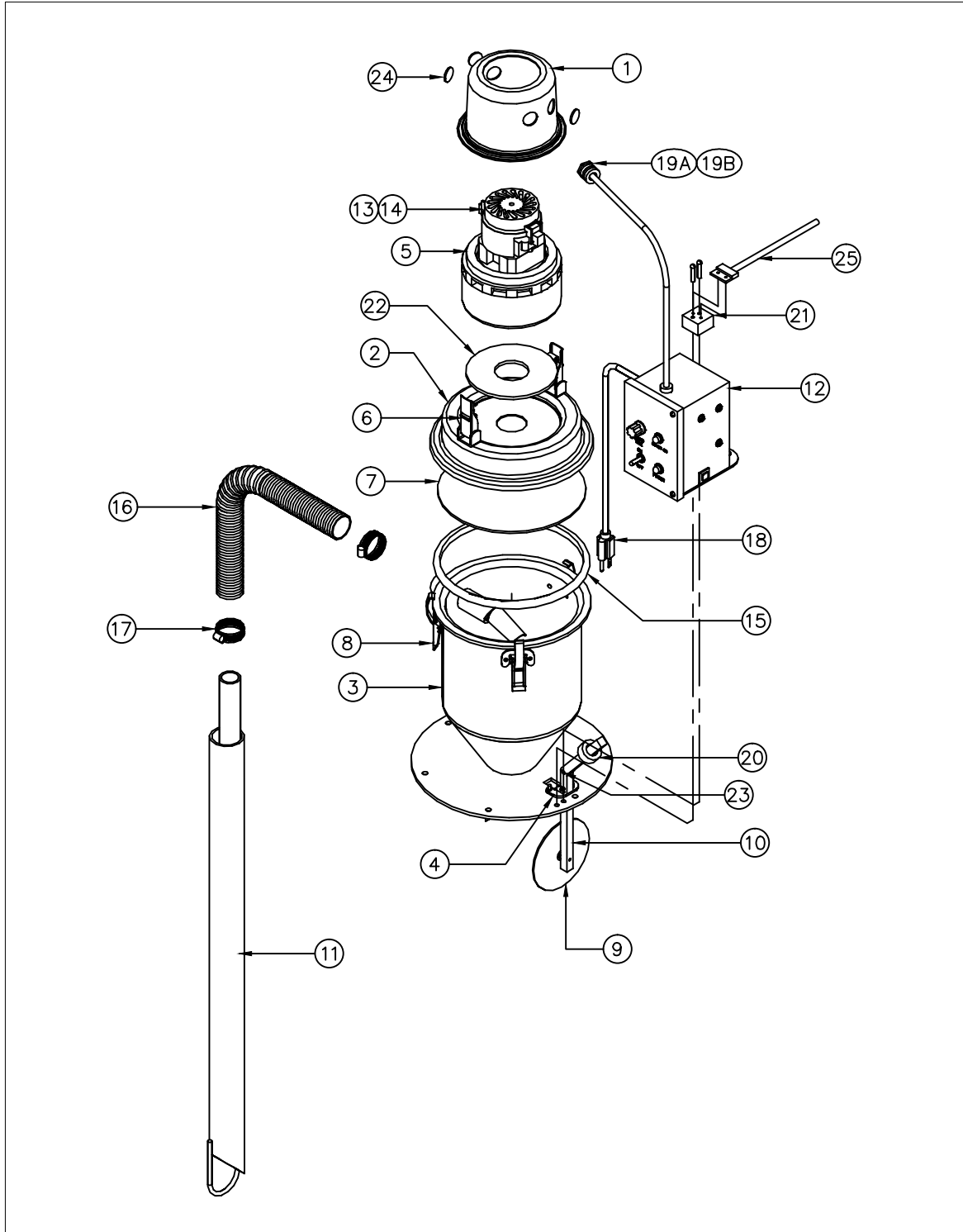
STATIC SHOCK HAZARD
WARNING



BASE MOUNTING DIMENSIONS



HL-3 HOPPER LOADER PARTS



PLASTIC PROCESS EQUIPMENT, INC.

8303 Corporate Park Drive, Macedonia (CLEVELAND), OHIO 44056
 (216) 367-7000 TOLL FREE: 800-321-0562 FAX (216) 367-7022 ORDER FAX: 800-223-8305 EMAIL: SALES@PPE.COM

6385 Montessouri Street, Las Vegas, Nevada 89113
 (702) 433-6385 TOLL FREE: 800-258-8877
 FAX: (702) 433-6388

11218 Challenger Ave., Odessa, FL 33556
 (727) 834-8888 TOLL FREE: 800-282-6783
 FAX: (727) 834-8873

HL-3 HOPPER LOADER

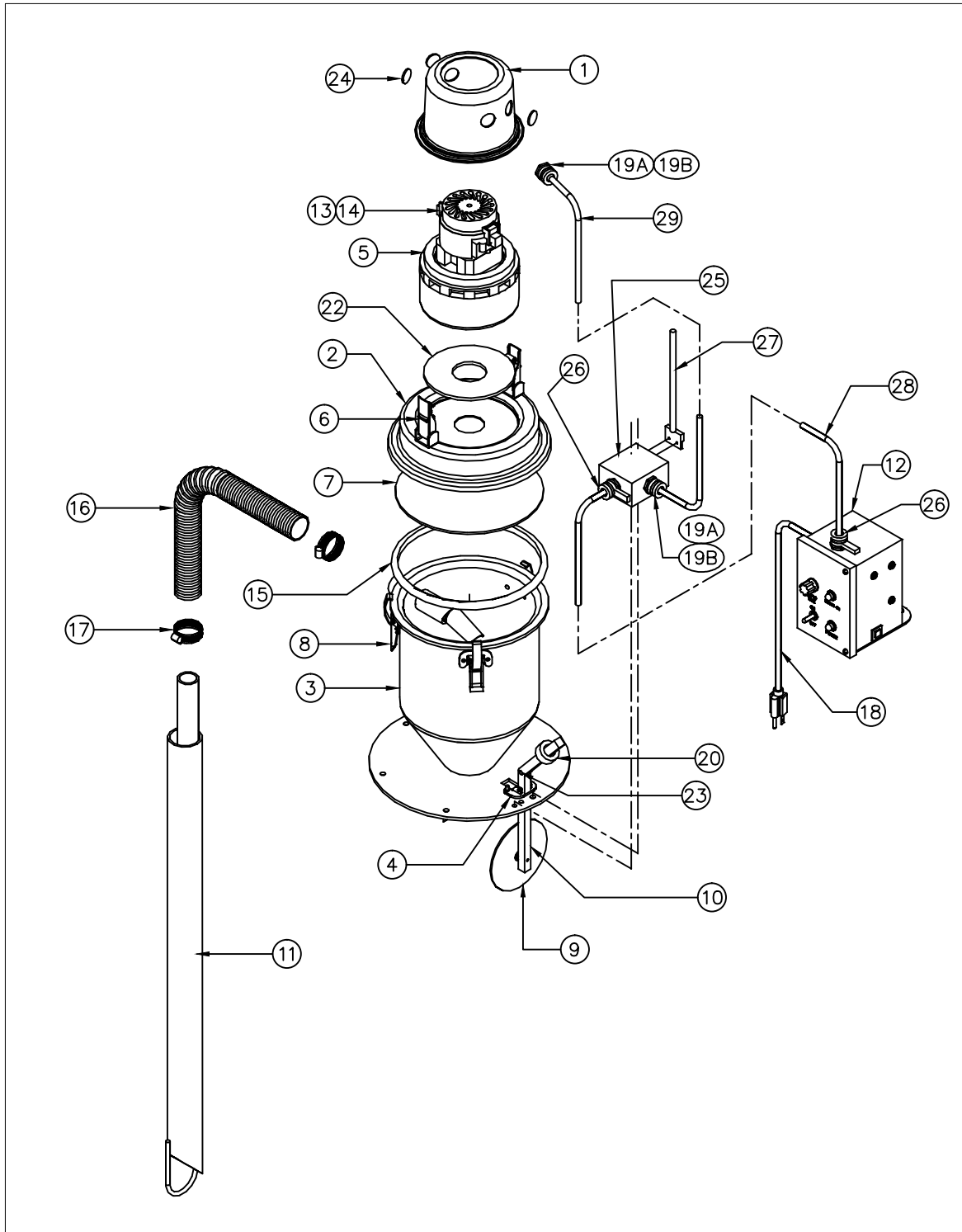
11/07/24

PARTS LIST

11/07/24

ID	QTY	P/N	DESCRIPTION	UOM
1	1	A-9105	HOPPER LOADER MOTOR CAP	EA
2	1	A-9176	HOPPER LOADER LID	EA
3	1	C-9177	HOPPER LOADER HOUSING	EA
4	1	ZF10172N	FOOT VALVE MOUNTING BRACKET HOPPER LOADERS	EA
5	1	8694K14	FOAM MOTOR GASKET MATERIAL PER FT (was 8694K14)	FT
6	2	91-99-218	MOTOR COVER CLAMP FOR HOPPER LOADER	EA
7	1	FR1	FILTER RING 8.5" A-3723	EA
8	3	HR1	HOUSING CLAMPS	EA
9	1	B-2617	FOOT VALVE	EA
10	1	B-7446	FOOT VALVE ARM	EA
11	1	TALP382P	36"S.S.PROBE 1-1/4"OD INLET 2 PIECE FOR TAL	EA
12	1	CBHL3	HOPPER LOADER CONTROL BOX (SAME AS CBHL1)	EA
13	1	2M266	MOTOR	EA
14	2	1R236	BRUSHES FOR HOPPER LOADER MOTOR	EA
15	1	ZX2054	GASKET 8.5"DIA	EA
16	1	VHG11415	GROUNDED VACUUM HOSE 1-1/4" DIA 15FT	EA
17	2	HSS-20	HOSE CLAMPS	EA
18	1	K5152	K5152 12' POWER CORD	EA
19A	1	S2112	STRAIN RELIEF FOR ELECTRIC CORD	EA
19B	1	BL-50	1/2" TIGER GRIPS	EA
20	1	2X570	3/4" COLLAR	EA
21	1	A-7418	SWITCH MOUNTING BLOCK FOR HOPPER LOADER	EA
22	1	ZX2056	ROUND MOTOR GASKET FOR HOPPER LOADER	EA
23	1	MASL02501000	MAGNET FOR HL-1 SWITCH	EA
24	3	NER50	KNOCK OUT SEAL FOR HOPPER LOADER LID	EA
25	1	PRX8300P	MAG SWITCH WITH 6" LEADS AND PLUG	EA

HL-3 RCB HOPPER LOADER PARTS



PLASTIC PROCESS EQUIPMENT, INC.



E 8303 Corporate Park Drive
 A Macedonia, Ohio 44056
 S (216) 367-7000 FAX: (216) 367-7022
 T TOLL FREE: 321-0562

W 6385 Montessouri Street
 E Las Vegas, Nevada 89113
 S (702) 433-6385 FAX: (702) 433-6388
 T TOLL FREE: 800-258-8877

www.ppe.com
 E-MAIL: sales@ppe.com
 TOLL FREE: (800) 362-0706
 ORDER FAX: (800) 223-8305

HL-3 HOPPER LOADER REMOTE UNIT

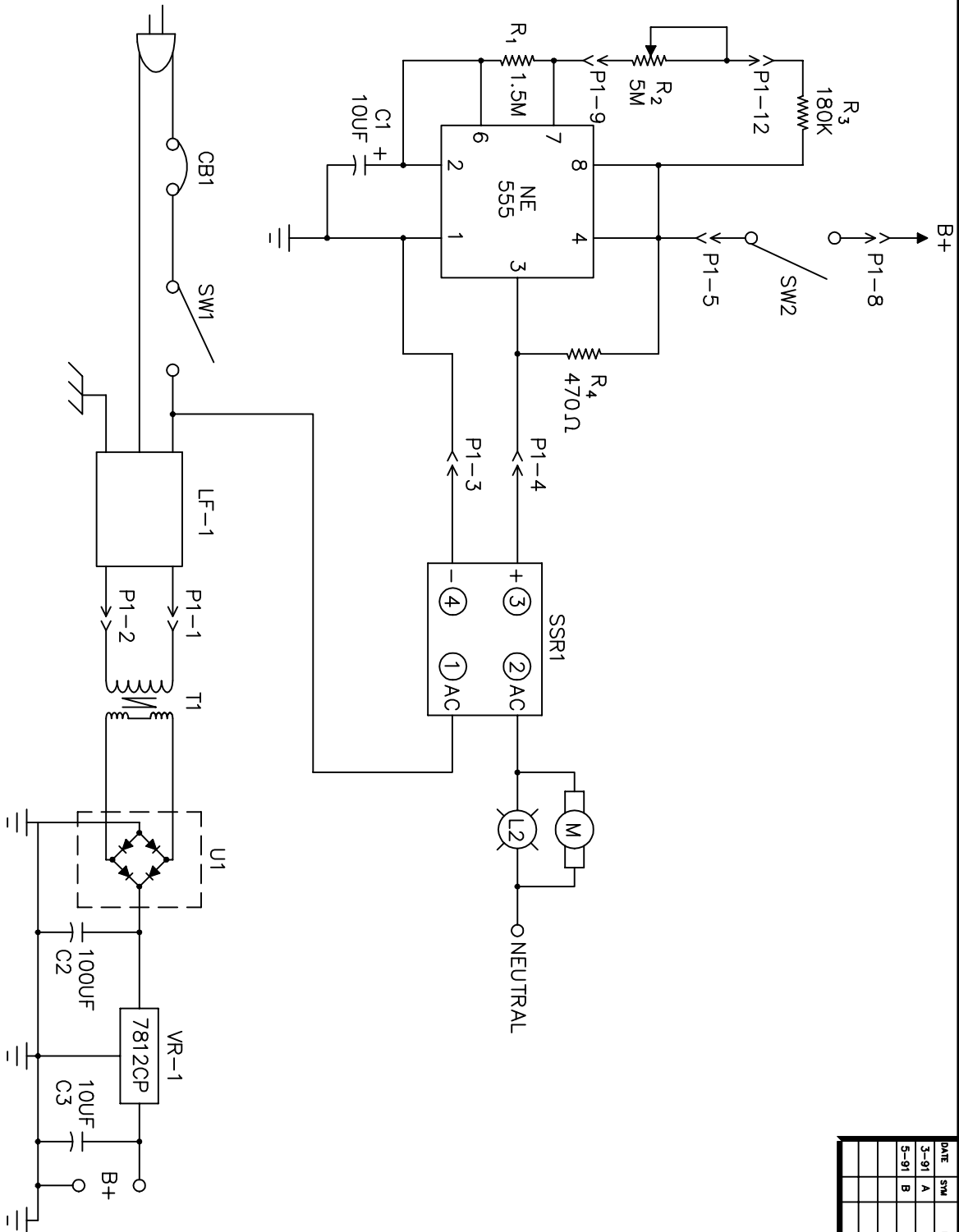
11/07/24

PARTS LIST

11/07/24

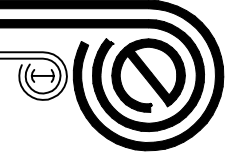
ID	QTY	P/N	DESCRIPTION	UOM
1	1	A-9105	HOPPER LOADER MOTOR CAP	EA
2	1	A-9176	HOPPER LOADER LID	EA
3	1	C-9177	HOPPER LOADER HOUSING	EA
4	1	ZF10172N	FOOT VALVE MOUNTING BRACKET HOPPER LOADERS	EA
5	1	8694K14	FOAM MOTOR GASKET MATERIAL PER FT (was 8694K14)	FT
6	2	91-99-218	MOTOR COVER CLAMP FOR HOPPER LOADER	EA
7	1	FR1	FILTER RING 8.5" A-3723	EA
8	3	HR1	HOUSING CLAMPS	EA
9	1	B-2617	FOOT VALVE	EA
10	1	B-7446	FOOT VALVE ARM	EA
11	1	TALP382P	36"S.S.PROBE 1-1/4"OD INLET 2 PIECE FOR TAL	EA
12	1	RCB12	HOPPER LOADER CONTROL BOX FOR RCB MODEL	EA
13	1	2M266	MOTOR	EA
14	2	1R236	BRUSHES FOR HOPPER LOADER MOTOR	EA
15	1	ZX2054	GASKET 8.5"DIA	EA
16	1	VHG11415	GROUNDED VACUUM HOSE 1-1/4" DIA 15FT	EA
17	2	HSS-20	HOSE CLAMPS	EA
18	1	K5152	K5152 12' POWER CORD	EA
19A	2	S2112	STRAIN RELIEF FOR ELECTRIC CORD	EA
19B	4	BL-50	1/2" TIGER GRIPS	EA
20	1	2X570	3/4" COLLAR	EA
22	1	ZX2056	ROUND MOTOR GASKET FOR HOPPER LOADER	EA
23	1	MASL02501000	MAGNET FOR HL-1 SWITCH	EA
24	3	NERS50	KNOCK OUT SEAL FOR HOPPER LOADER LID	EA
25	1	885-3606	REMOTE SWITCH BOX	EA
26	2	XC290	3/8 CONNECTOR	EA
27	1	PRX8300P	MAG SWITCH WITH 6" LEADS AND PLUG	EA
28	12	YH16/6SLBLK	POWER CORD FOR HL-1RCB (PER FOOT)	EA
29	2.66	16/3	50 FT CORD BLACK (PER FOOT)	EA

DATE	SYM	REVISION RECORD	AUTH	DR	CK
3-91	A	REVISED		BTS	
5-91	B	ADDED SW2		BTS	



CONFIDENTIALITY

ALL DRAWINGS AND SPECIFICATIONS IN ANY DRAWINGS OR DATA FURNISHED BY PLASTIC PROCESS EQUIPMENT, INC. ARE HEREBY DESIGNATED AS PROPRIETARY AND CONFIDENTIAL AND SHALL BE MAINTAINED BY USER AS SUCH INCLUDING, IN APPLICABLE CASES, IN CONFORMITY WITH EXISTING CORPORATE CONFIDENTIALITY AGREEMENTS. INFORMATION ON THIS DRAWING IS THE PROPERTY OF PLASTIC PROCESS EQUIPMENT, INC. AND SHALL NOT BE USED OR DISCLOSED TO THIRD PERSONS EXCEPT IN CONFORMITY WITH PLASTIC PROCESS EQUIPMENT, INC. CONSENT. REPRODUCTION RIGHTS ARE RESERVED BY PLASTIC PROCESS EQUIPMENT, INC.



TOLERANCES UNLESS OTHERWISE SPECIFIED		PLASTIC PROCESS EQUIPMENT, INC.	
DECIMAL	±.005	MACEDONIA, OH	
FRACTIONAL	±1/16	SCALE	
ANGULAR	±1/2°	DRAWN BY BTS	
TITLE		APPROVED BY	
ELECTRICAL SCHEMATIC		A-4262	
DATE	02/28/91	DRAWING NUMBER	