



INSTRUCTIONS CONVEYORS & SEPARATORS



Bottle & Parts



Separators



Inclined & Infeed Combo



Vee-Guide Tracking



FIC Conveyor



Granulator Feed



Inclined



Parts Conveyor

MODEL NO.

SERIAL NO.

PPE Conveyors are manufactured and sold direct by Plastic Process Equipment, Inc. We are not associated with any other manufacturer. Always specify genuine PPE conveyors! Do not accept substitutes.

Made in the U.S.A. by Plastic Process Equipment, Inc. © copyright 2024



PLASTIC PROCESS EQUIPMENT, INC.

EAST
8303 CORPORATE PARK DRIVE
MACEDONIA, OHIO 44056-2300
216-367-7000 • FAX: 216-367-7022
TOLL FREE: 800-321-0562

WEST
6385 MONTESSOURI STREET
LAS VEGAS, NEVADA 89113-1186
702-433-6385 • FAX: 702-433-6388
TOLL FREE: 800-258-8877

www.ppe.com
e-mail: sales@ppe.com

Toll Free: USA, Canada & Mexico
800-362-0706

Order Fax: 800-223-8305

Thank you for purchasing a conveyor or separator from Plastic Process Equipment, Inc. These instructions are intended as a guide for your new product. If you have any additional questions, contact PPE at 800-321-0562.

RECEIVING

Thoroughly inspect your new conveyor or separator before unpacking it for set up. Report any damage to the motor freight carrier; they are responsible for damages incurred during transit.

ATTENTION!!

Please read through the entire booklet first.

You must be trained and authorized by your employer in the proper installation operation, maintenance and set-up of your new equipment. **Safety First Always!**

ELECTRICAL

All conveyors and separators are equipped with a control device and an overload protection heater. A grounded 120 volt outlet and a three wire grounded extension cord must be used at all times.

The On/Off switches on some models are resettable, should the switch get overloaded for some reason it may be necessary to reset it before the conveyor will run again. See switch cover for reset instructions.

PROGRAMMABLE CONTROL

Fully programmable control system offers variable speed 0-30 feet per minute, indexing ability, photo-eye capable, reversible direction and can interface with an injection molding machine. Includes electronic motor overload protection, short, fault, plus over/under voltage protection. Requires 120/60/1 grounded power supply. Control converts power supply to 230/60/3 for the drive motor. Please refer to the control instructions.



WARNING DRIVE MOTOR

The standard 1/6hp 655 drive motor is not designed for repeated start stop operation, if you turn the conveyor on and off more than 10 times per hour you damage the motor by overheating. There are special order motors available for start/stop operations, please consult the factory.

CAUTION DURING USE AND OPERATION OF CONVEYORS OR SEPARATORS

- Do not wear loose clothing or jewelry around the conveyor.
- Do not wear rings, necklaces, or jewelry.
- Long hair **must** be tied and netted.
- Keep all hands, arms, and fingers away from any moving parts except the conveyor belt surface.
- Never stand on the conveyor belt for any reason whatsoever.
- Do not operate any conveyor with the guards removed.
- Do not operate the conveyor with parts missing, removed, or in a disassembled state.
- Pay special attention to the ON-OFF switch location.
- Wear safety glasses if your company or process requires them.
- You must unplug the conveyor before performing any repairs or maintenance.
- If you are unsure about installation, operation, maintenance, or setup call PPE!

TYPES OF CONVEYORS

PPE carries both V-Belt and non V-Belt Conveyors. The easiest way to tell if your conveyor is a V-Belt is by the serial number. If there is a "V" in the serial number your conveyor is a V-Belt. **EXAMPLE:** the serial number PC1812V251439 is a conveyor with the V-Belt system (note the V in the serial number). If the serial number on your conveyor has an **R** or an **A** following the **V**, your conveyor has direct drive. **EXAMPLE:** PC 182VR251439 is a direct drive conveyor.

BELT TRACKING AND TENSION

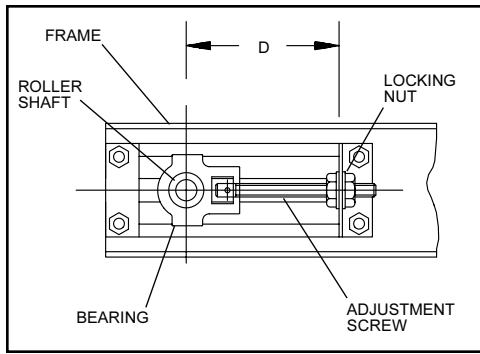
All conveyors and separators are thoroughly tested in our factory after final assembly. Although the belts are adjusted to track properly with the right amount of tension, some adjustments may be necessary during use. For best results and longevity of the drive components, the belt should be run with the **LEAST** tension needed to transport the load without slipping. If the belt is too loose, it will slip causing wear to the belt's underside. **CAUTION: DO NOT OVERTIGHTEN THE CONVEYOR BELT.** An overtightened belt will cause premature failure of your bearings, shafts and, on some models, the drive unit.

BELT TRACKING: THE V-BELT STYLE

The V-Belt tracking system keeps your belt centered and tracking properly. No adjustment should be necessary if both take up bolts are adjusted the same amount during belt tension adjustment. To check the tracking of your belt, measure the take up bolts on both sides of the conveyor. The distance between the center of the roller shaft and the bracket behind the locking nut (**see Figure 1**) should be the same for both bolts.

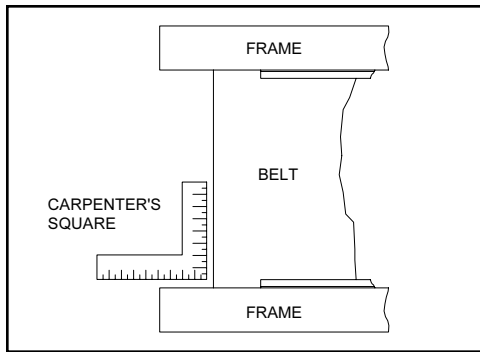
	PLASTIC PROCESS EQUIPMENT, INC.	www.ppe.com e-mail: sales@ppe.com
	EAST 8303 CORPORATE PARK DRIVE MACEDONIA, OHIO 44056-2300 216-367-7000 • FAX: 216-367-7022 TOLL FREE: 800-321-0562	WEST 6385 MONTESSOURI STREET LAS VEGAS, NEVADA 89113-1186 702-433-6385 • FAX: 702-433-6388 TOLL FREE: 800-258-8877

Figure 1



For another quick check, place a carpenter's square along the frame and belt of your conveyor. If it is tracking properly, the carpenter's square will fit snugly in the corner (*see Figure 2*). If your conveyor is not tracking properly, adjust the locking nuts on both sides until they are equal. **BE CAREFUL NOT TO OVERTIGHTEN!**

Figure 2



BELT TRACKING: NON V-BELT CONVEYORS

Check to ensure your conveyor is tracking properly. If your belt drifts to the left or right, it needs adjustment. To adjust your belt, loosen the locking nuts on each side of the conveyor (*see Figure 1*). With the conveyor operating, tighten the tension screw on the side of the drift 1/4 turn (**EXAMPLE:** if your belt drifts to the right, tighten the right take-up screw approximately 1/4 turn). Wait several minutes to allow the belt to drift and reposition on the rollers. Continue to adjust the appropriate take up bolt until the belt tracks evenly on both sides. **DO NOT OVERTIGHTEN THE CONVEYOR BELT!** If necessary, reset the belt tracking by loosening the opposite side. Once the belt tracking is complete, be sure to lock the take up adjustment screws with the locking nut.

LUBRICATION: DIRECT DRIVE UNITS

PPE conveyors and separators (FIC, FT, ICB, PC-06, PC, PUC, SCI and FS Separator) have two drive bearings (the bearings at the motor end of the conveyor), and the take-up bearing (at the opposite end of the conveyor). All bearings are permanently lubricated, therefore we do not provide a grease fitting. Our experience has shown conveyor users tend to over grease bearings to the point where grease works its way between the rollers and belts causing serious problems of contamination and belt slippage.

LUBRICATION: CHAIN DRIVE UNITS

(BIC, FT, FS, VICB, PC 06, PC 12, PC 18, PC 24, PCS, PUC, VIB, ICG, PCS) PPE chain drive units use permanently lubricated drive chains that do not require lubrication. All bearings are permanently lubricated, therefore we do not provide a grease fitting.

CAUTION:
DO NOT ALLOW LUBRICATION TO GET ON THE UNDERSIDE OF THE BELT.

CAUTION:
BEARINGS SHOULD NOT RUN CONTINUOUS AT TEMPERATURES OVER 200°F AND SHOULD NEVER EXCEED 225°F FOR INTERMITTENT OPERATIONS.

PCS SEPARATOR ATTACHMENTS

The PCS separator is driven off of the main conveyor unit using a belt drive system. This allows slippage if the separator roller unit were to catch on something. **DO NOT OVERTIGHTEN** the drive belt, it should have just enough tension to drive the roller. This is a safety feature.

WARRANTY

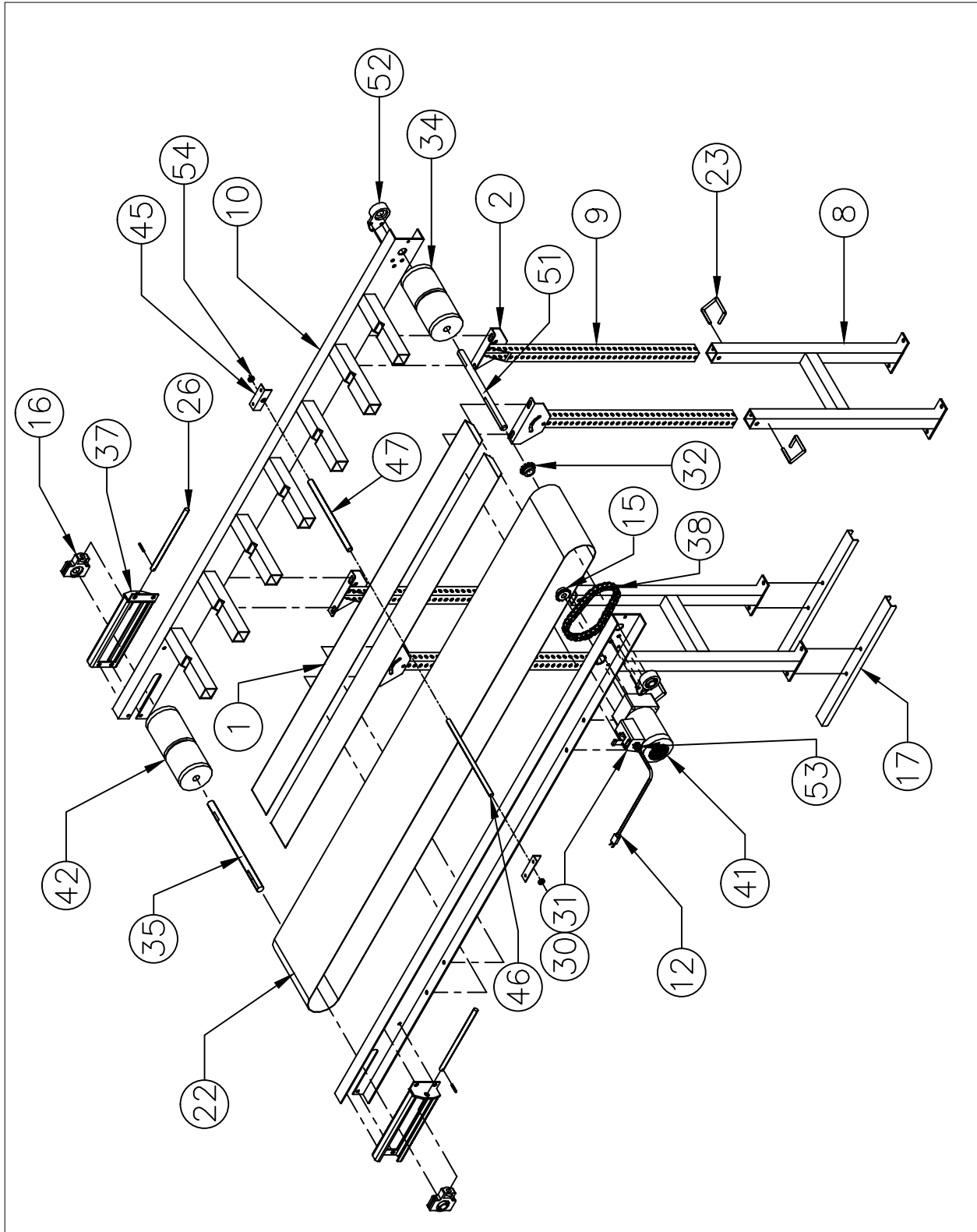
All PPE Conveyors have a full **one year warranty**. This warranty doesn't include conveyor belts because they are subject to excessive wear damage and abuse by the user. This Warranty should not extend to goods subjected to misuse, abuse, neglect, accident or improper installation or maintenance, or products or goods which have been altered, modified or repaired by anyone other than seller or its authorized and approved representatives.

MODIFICATIONS:

WARNING! Do not modify this machine in any way. Modifications of any kind not only void any warranty, but it can cause serious injury or damage to the equipment and/or personnel.

	PLASTIC PROCESS EQUIPMENT, INC.	www.ppe.com e-mail: sales@ppe.com	
	8303 CORPORATE PARK DRIVE MACEDONIA, OHIO 44056-2300 216-367-7000 • FAX: 216-367-7022	6385 MONTESSOURI STREET LAS VEGAS, NEVADA 89113-1186 702-433-6385 • FAX: 702-433-6388	Toll Free: USA, Canada & Mexico 800-362-0706
	TOLL FREE: 800-321-0562	TOLL FREE: 800-258-8877	Order Fax: 800-223-8305

FT CONVEYOR PARTS



PLASTIC PROCESS EQUIPMENT, INC.

8303 Corporate Park Drive, Macedonia (CLEVELAND), OHIO 44056
 (216) 367-7000 TOLL FREE: 800-321-0562 FAX (216) 367-7022 ORDER FAX: 800-223-8305 EMAIL: SALES@PPE.COM

6385 Montessouri Street, Las Vegas, Nevada 89113
 (702) 433-6385 TOLL FREE: 800-258-8877
 FAX: (702) 433-6388

11218 Challenger Ave., Odessa, FL 33556
 (727) 834-8888 TOLL FREE: 800-282-6783
 FAX: (727) 834-8873

FT CONVEYOR PARTS LIST BODINE DRIVE

11/07/24

ID	QTY	P/N	DESCRIPTION	UOM
OPTIONAL	1	0791B	0791B BODINE VARIABLE SPEED CONTROL W/12FT CORD	EA
OPTIONAL	1	5044	1/4 HP DC BODINE MOTOR BUILT BEFORE 7/1/2010	EA
OPTIONAL	1	MDL-2	FUSE 2A/250V FOR 6183 & 1060 MOTOR	EA
OPTIONAL	1	1060	1/4 HP DC MOTOR BUILT AFTER 7/1/2010	EA
OPTIONAL	1	2263	3/8 HP AC BODINE MOTOR 230V 3 PHASE	EA
OPTIONAL	1	ESV371NO1SXB	LENZE MULTI-FUNCTION CONTROLLER	EA
OPTIONAL	1	A-12952	LENZE CONTROLLER BRACKET FOR SOME FTP/PC CONVEYOR	EA
OPTIONAL	1	7696K31	IN-LINE FUSE HOLDER (OLD# 7696K41)	EA
OPTIONAL	1	H40B10X5/8	4010 X 5/8" HARDENED SPROCKET	EA
OPTIONAL	1	0984	JUNCTION BOX FOR BODINE MOTOR	EA
OPTIONAL	2	XC290	3/8 CONNECTOR	EA
OPTIONAL	1	ABC-12	FUSE	EA
OPTIONAL	2	YH16/6SLBLK	POWER CORD FOR HL-1RCB (PER FOOT)	EA
1		B-1285	BEDDING	EA
2		B-1654	LEG MOUNTING BRACKET POWERCOATED	EA
8		A-7995-3212	UNISTRUT STAND BOTTOM 12" WIDE	EA
8		A-7995-3218	UNISTRUT STAND BOTTOM 18" WIDE	EA
8		A-7995-3224	UNISTRUT STAND BOTTOM 24" WIDE	EA
9		A-4703	UNISTRUT STAND EXTENSION (GALV) 36"	EA
10	1	A-4737	FRAME	EA
12	1	K5152	K5152 12' POWER CORD	EA
15	1	H40B10X3/4	4010 X 3/4" HARDENED SPROCKET DRIVE	EA
16	2	TU250X1	TAKE-UP BEARING	EA
17		B-1687	PC LEG FEET LONG CHANNEL	EA
22	1	BELT	See Belt Sheet (uses PC style belt)	
23	2	T092	LOCK PIN	EA
26	2	C-5582B	ADJ BOLT FOR TAKE UP BRACKET 12"	EA
30	1	CR101Y11	SWITCH WITH PILOT LIGHT	EA
31	1	QOA578	HEATER/FUSE FOR 655 MOTOR	EA
32	1	H40B20X1	4020 X 1" HARDENED SPROCKET DRIVEN	EA
34	1	A-6837-12	V-GR DR ROLLER 1" SHAFT FT BODINE KNURLED	EA
34	1	A-6837-18	V-GR DR ROLLER 1" SHAFT FT BODINE KNURLED	EA
34	1	A-6837-24	V-GR DR ROLLER 1" SHAFT FT BODINE KNURLED	EA
35	1	B-5620-12	IDLER SHAFT 12"	EA
35	1	B-5620-18	IDLER SHAFT 18"	EA
35	1	B-5620-24	IDLER SHAFT 24"	EA
37	2	C-5582	1" TAKEUP BRACKET W/PAINT	EA
38	1	40CK	40 CHAIN, HALF LINK, MASTER LINK KIT	EA
41	1	655	655 1/6HP AC BODINE GEARMOTOR	EA
42	1	A-6236-12	5" DIA ROLLER FOR FT CONVEYOR	EA
42	1	A-6236-18	5" DIA ROLLER FOR FT CONVEYOR	EA
42	1	A-6236-24	5" DIA ROLLER FOR FT CONVEYOR	EA
45	2	A-2454	BELT SAG BRACKET (EA)	EA
46	1	B-5891-R12	SAG ROLLER FOR 12"	EA
46	1	B-5891-R18	SAG ROLLER FOR 18"	EA
46	1	B-5891-R24	SAG ROLLER FOR 24"	EA
47	1	B-5891-S12	SAG SHAFT FOR 12"	EA
47	1	B-5891-S18	SAG SHAFT FOR 18"	EA
47	1	B-5891-S24	SAG SHAFT FOR 24"	EA
51	1	B-6819-12	1" DRIVE SHAFT PC BCP FT 12"	EA
51	1	B-6819-18	1" DRIVE SHAFT PC BCP FT 18"	EA
51	1	B-6819-24	1" DRIVE SHAFT PC BCP FT 24"	EA
52	2	FB16X1	FIXED BEARING	EA
53	1	S2112	STRAIN RELIEF FOR ELECTRIC CORD	EA
54	2	2X569	5/8" COLLAR	EA