

INSTRUCTIONS FOR BCP CONVEYORS

MODEL NO.
BCP
SERIAL NO.



PPE Slim-Line Conveyors are manufactured and sold direct by Plastic Process Equipment, Inc. We are not associated with any other manufacturer. Always specify genuine PPE Slim-Line conveyors! Do not accept substitutes.

Made in the U.S.A. by Plastic Process Equipment, Inc. © copyright 2024



PLASTIC PROCESS EQUIPMENT, INC.

EAST
8303 CORPORATE PARK DRIVE
MACEDONIA, OHIO 44056-2300
216-367-7000 • FAX: 216-367-7022
TOLL FREE: 800-321-0562

WEST
6385 MONTESSOURI STREET
LAS VEGAS, NEVADA 89113-1186
702-433-6385 • FAX: 702-433-6388
TOLL FREE: 800-258-8877

www.ppe.com
e-mail: sales@ppe.com

Toll Free: USA, Canada & Mexico
800-362-0706

Order Fax: 800-223-8305

Thank you for purchasing a conveyor or separator from PlasticProcess Equipment. These instructions are intended as a guide for your new product. If you have any additional questions, contact Budget at 800-332-3531.

RECEIVING

Thoroughly inspect your new conveyor before unpacking it for set up. Report any damage to the motor freight carrier; they are responsible for damages incurred during transit.

ATTENTION!!

Please read through the entire booklet first.

You must be trained and authorized by your employer in the proper installation operation, maintenance and set-up of your new equipment. ***Safety First Always!***

ELECTRICAL

All conveyors are equipped with a grounded and fused speed controller. A grounded 120 volt outlet and a three wire grounded extension cord must be used at all times.

The On/Off switch on some models is resettable, should the switch get overloaded for some reason it may be necessary to reset it before the conveyor will run again. See switch cover for reset instructions.

WARNING DRIVE MOTOR

The standard drive motor is not designed for repeated start stop operation, if you turn the conveyor on and off more than 10 times per minute you damage the motor by overheating. There are special order motors available for start/stop operations, please consult the factory.

CAUTION DURING USE AND OPERATION OF CONVEYOR

- Do not wear loose clothing or jewelry around the conveyor.
- Do not wear rings, necklaces, or jewelry.
- Long hair **must** be tied and netted.
- Keep all hands, arms, and fingers away from any moving parts except the conveyor belt surface.
- Never stand on the conveyor belt for any reason whatsoever.
- Do not operate any conveyor with the guards removed.
- Do not operate the conveyor with parts missing, removed, or in a disassembled state.
- Pay special attention to the ON-OFF switch location.
- Wear safety glasses if your company or process requires them.
- You must unplug the conveyor before performing any repairs or maintenance.
- If you are unsure about installation, operation, maintenance, or setup call PPE!

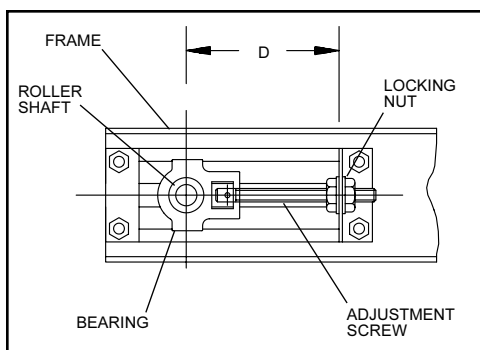


Figure 1

BELT TRACKING

The V-Belt tracking system keeps your belt centered and tracking properly. No adjustment should be necessary if both take up bolts are adjusted the same amount during belt tension adjustment.

To check the tracking of your belt, measure the take up bolts on both sides of the conveyor. The distance between the center of the roller shaft and the bracket behind the locking nut (**see Figure 1**) should be the same for both bolts. For another quick check, place a carpenter's square

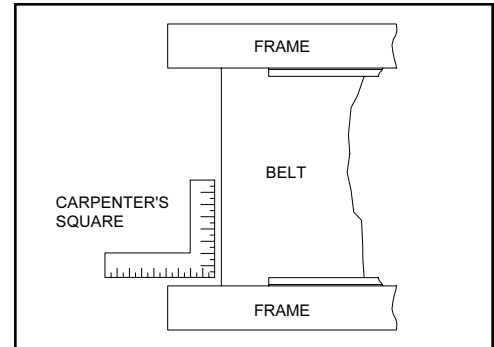


Figure 2

along the frame and belt of your conveyor. If it is tracking properly, the carpenter's square will fit snugly in the corner (**see Figure 2**). If your conveyor is not tracking properly, adjust the locking nuts on both sides until they are equal. **BE CAREFUL NOT TO OVERTIGHTEN!**

LUBRICATION

PPE chain drive units use permanently lubricated drive chains that **do not** require lubrication. All bearings are permanently lubricated also, therefore we do not provide a grease fitting. Our experience has shown conveyor users tend to over grease bearings to the point where grease works it's way between the rollers and belts causing serious problems of contamination and belt slippage.

CAUTION:
DO NOT ALLOW LUBRICATION TO GET ON THE UNDERSIDE OF THE BELT.

CAUTION:
BEARINGS SHOULD NOT RUN CONTINUOUS AT TEMPERATURES OVER 200°F AND SHOULD NEVER EXCEED 225°F FOR INTERMITTENT OPERATIONS.

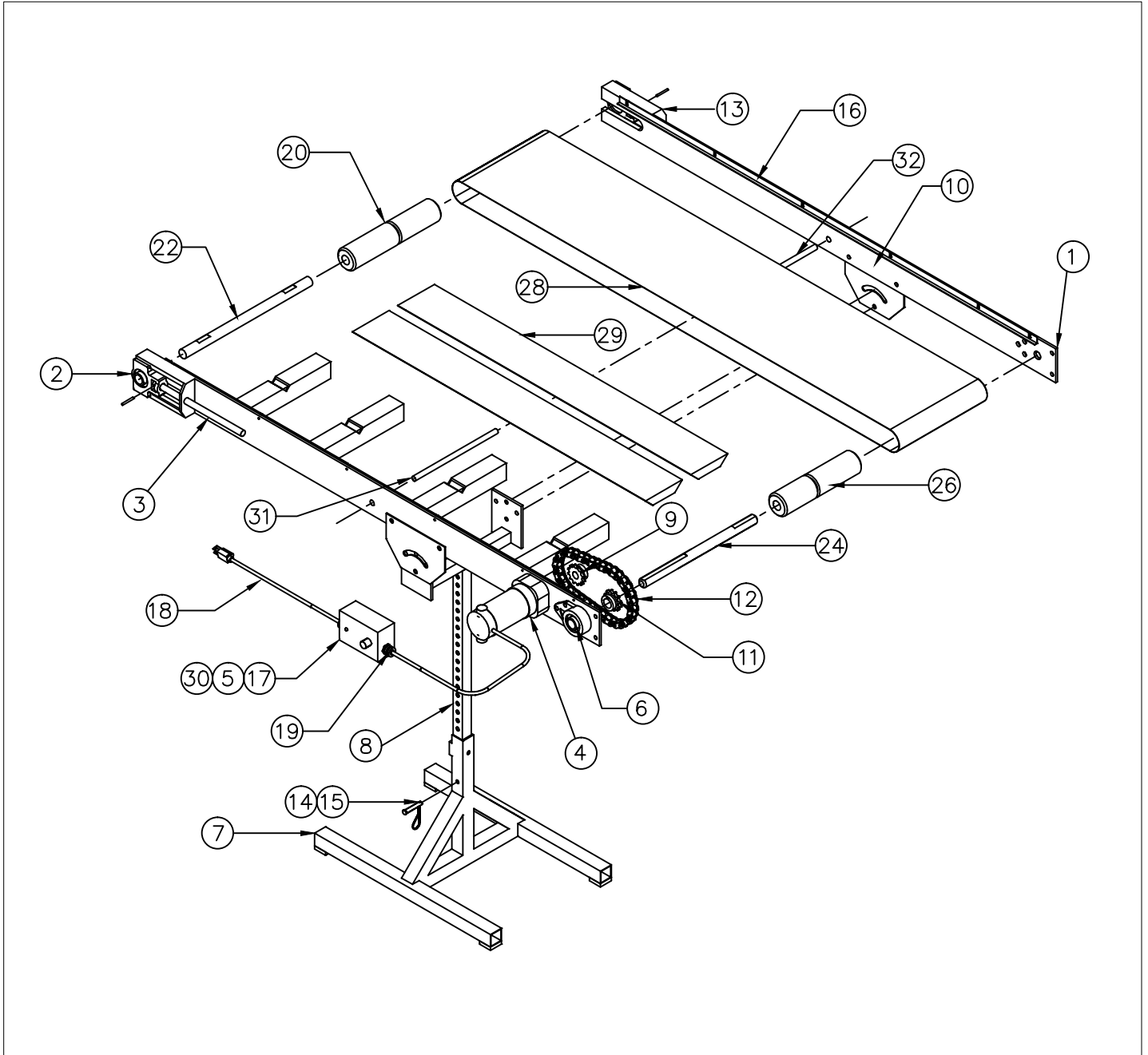
WARRANTY

All PPE Conveyors have a full **one year warranty**. This warranty doesn't include conveyor belts because they are subject to excessive wear damage and abuse by the user. This Warranty will not extend to goods subjected to misuse, abuse, neglect, accident or improper installation or maintenance, or products or goods which have been altered, modified or repaired by anyone other than seller or its authorized and approved representatives.

MODIFICATIONS:

WARNING! Do not modify this machine in any way. Modifications of any kind not only void any warranty, but it can cause serious injury or damage to the equipment and/or personnel.

BCP CONVEYOR PARTS



PLASTIC PROCESS EQUIPMENT, INC.

8303 Corporate Park Drive, Macedonia (CLEVELAND), OHIO 44056
 (216) 367-7000 TOLL FREE: 800-321-0562 FAX (216) 367-7022 ORDER FAX: 800-223-8305 EMAIL: SALES@PPE.COM

6385 Montessouri Street, Las Vegas, Nevada 89113
 (702) 433-6385 TOLL FREE: 800-258-8877
 FAX: (702) 433-6388

11218 Challenger Ave., Odessa, FL 33556
 (727) 834-8888 TOLL FREE: 800-282-6783
 FAX: (727) 834-8873

BCP BUDGET CONVEYOR

11/07/24

ID	QTY	P/N	DESCRIPTION	UOM
OPTIONAL	1	B-1602-48	MILD STEEL PC SIDERAILS (SET) 48"	EA
OPTIONAL	1	B-1602-60	MILD STEEL PC SIDERAILS (SET) 60"	EA
OPTIONAL	1	B-1602-72	MILD STEEL PC SIDERAILS (SET) 72"	EA
OPTIONAL	1	B-1602-84	MILD STEEL PC SIDERAILS (SET) 84"	EA
OPTIONAL	1	B-1602-96	MILD STEEL PC SIDERAILS (SET) 96"	EA
OPTIONAL	1	B-1602-120	MILD STEEL PC SIDERAILS (SET) 120"	EA
OPTIONAL	1	B-1602-144	MILD STEEL PC SIDERAILS (SET) 144"	EA
OPTIONAL	1	B-1602-48SS	PCS SIDERAILS S/S (SET) 48"	EA
OPTIONAL	1	B-1602-60SS	PCS SIDERAILS S/S (SET) 60"	EA
OPTIONAL	1	B-1602-72SS	PCS SIDERAILS S/S (SET) 72"	EA
OPTIONAL	1	B-1602-84SS	PCS SIDERAILS S/S (SET) 84"	EA
OPTIONAL	1	B-1602-96SS	PCS SIDERAILS S/S (SET) 96"	EA
OPTIONAL	1	B-1602-120SS	PCS SIDERAILS S/S (SET) 120"	EA
OPTIONAL	1	B-1602-144SS	PCS SIDERAILS S/S (SET) 144"	EA
1	1	D-3174-W-L	FRAME	EA
2	2	TU250X1	TAKE-UP BEARING	EA
3	1	C-5582-MOD	ADJ BOLT FOR TAKE UP BRACKET 6"	SET
4	1	1060	1/4 HP DC MOTOR	EA
5	1	KB9380C	VARI SPEED CONTROL	EA
5	1	9838	RESISTOR	EA
6	2	FB16X1	FIXED BEARING	EA
7	1	C-3079	LOWER STAND UNIT	EA *
8	1	C-6515-6	UPPER SEPARATOR STAND 6"	EA *
8	1	C-6515-12	UPPER STAND 12"	EA *
8	1	C-6515-18	UPPER STAND 18"	EA *
9	1	H40B12X5/8	4012 X 5/8 HARDENED SPROCKET	EA
10	2	B-3166	ANGLE TILT PLATE	EA *
11	1	H40B12X1	4012 X 1" HARDENED SPROCKET DRIVEN	EA
13	2	A-12215	BCP TAKE-UP BRACKET	EA
12	1	40CK	40 CHAIN, HALF LINK, MASTER LINK KIT	EA
14	1	98306A278	LEG CLEVIS PIN 3/8 dia	EA *
15	1	98335A054	.073 COTTER PIN FOR STAND	EA *
16	1	B-8190-93	BCP BELT STRIPS 93" (SET)	SET *
17	1	MDL-2	FUSE 2A/250V FOR 6183 & 1060 MOTOR	EA
18	1	K5152	K5152 12' POWER CORD	EA
19	2	S2112	STRAIN RELIEF FOR ELECTRIC CORD	EA
20	1	B-5578-6	VEE GROOVE ROLLER 6"	EA
20	1	B-5578-12	VEE GROOVE ROLLER 12"	EA
20	1	B-5578-18	VEE GROOVE ROLLER 18"	EA
22	1	B-5620-6	IDLER SHAFT 6"	EA
22	1	B-5620-12	IDLER SHAFT 12"	EA
22	1	B-5620-18	IDLER SHAFT 18"	EA
24	1	B-6819-6	1" DRIVE SHAFT PC BCP FT 6"	EA
24	1	B-6819-12	1" DRIVE SHAFT PC BCP FT 12"	EA
24	1	B-6819-18	1" DRIVE SHAFT PC BCP FT 18"	EA
26	1	A-6821-6N	V-GR DR ROLLER 1" SHAFT PC/PCS BODINE	EA
26	1	A-6821-12N	V-GR DR ROLLER 1" SHAFT PC/PCS BODINE	EA
26	1	A-6821-18N	V-GR DR ROLLER 1" SHAFT PC/PCS BODINE	EA
28	1	BELT	SEE BELT LIST	EA
29		B-1285	BEDDING	EA
30	1	9838	RESISTOR	EA
31	1	A-4779-6	TRANSITION ROLLER SHAFT 6"	EA
31	1	A-4779-12	TRANSITION ROLLER SHAFT 12"	EA
31	1	A-4779-18	TRANSITION ROLLER SHAFT 18"	EA
32	1	B-5891-R6	SAG ROLLER FOR 6"	EA
32	1	B-5891-R12	SAG ROLLER FOR 12"	EA
32	1	B-5891-R18	SAG ROLLER FOR 18"	EA

SEE BELT SHEET FOR BELTS

*- QUANTITY VARIES BY LENGTH AND WIDTH