

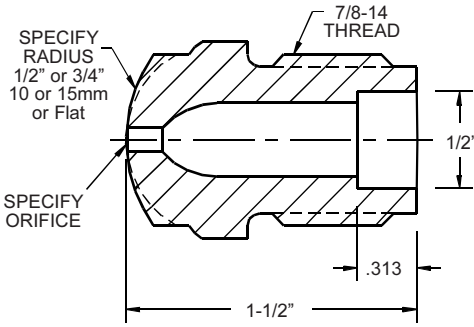


# MULTI-HOLE DISPERSION DISCS

## IMPROVES COLOR MIXING - FILTERS TRAMP METALS



### DISPERSION TIPS FIT ANY RT BODY



### COLOR DISPERSION RT TIP BORED FOR 1/2" DIA. DISC

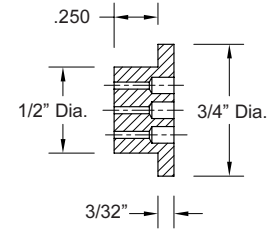
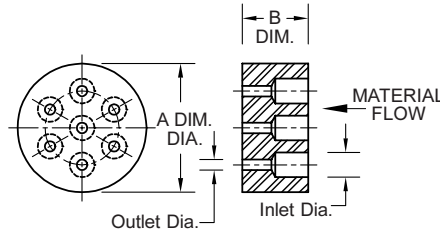
See RTGD Tips



**ISO-9002**  
MANUFACTURED IN A  
QUALITY SYSTEM CERTIFIED  
FACILITY.

### MD MULTI-HOLE DISPERSION DISCS

(MD = MULTI-HOLE DISC)



### STANDARD MD DISCS

PPE Model BMD Discs are a low cost but effective color dispersion device. Their multi-hole design requires little increased pressure and filters foreign matter from molding materials.

### ANTI SUCK-BACK TYPE DISC

Anti Suck-Back Disc has a larger dia. flange which pinches between nozzle seats.



BMD37

BMD36

BMD58

BMD45

BMD45F

STOCK DISPERSION DISC SELECTION CHART	A Disc Dia.	B Disc Width	Number of Holes	Inlet Holes Dia.	Outlet Holes Dia.	Flow Area In <sup>2</sup>	Equip Orifice Size	PART NO.	PRICE
<b>STANDARD MD TYPE</b>  <b>FLAT DISC</b>	1/2"	.250	17	.025	.025	.0083	.105	<b>BMD25</b>	\$20.00
		.250	7	.045	.045	.0111	.119	<b>BMD45</b>	\$16.00
		.250	7	.094	.040	.0088	.105	<b>BMD12</b>	\$16.00
		.250	7	.094	.094	.0490	.249	<b>BMD94</b>	\$16.00
	9/16"	.250	17	.025	.025	.0088	.105	<b>BMD96</b>	\$18.00
	.250	17	.050	.050	.0333	.205	<b>BMD97</b>	\$18.00	
<b>ANTI SUCK-BACK TYPE</b>  <b>FLAT DISC</b>	1/2" plus 3/4" Dia Flange	.340	17	.025	.025	.0088	.105	<b>BMD25F</b>	\$32.00
		.340	7	.045	.045	.0111	.119	<b>BMD45F</b>	\$22.00
		.340	7	.094	.040	.0088	.105	<b>BMD12F</b>	\$22.00
		.340	7	.094	.094	.0490	.249	<b>BMD94F</b>	\$22.00
<b>STANDARD MD TYPE</b>  <b>FLAT DISC</b>	5/8"	.250	9	.125	.045	.0143	.135	<b>BMD99</b>	\$17.00
		.312	9	.040	.040	.0113	.120	<b>BMD59</b>	\$17.00
		.312	9	.094	.040	.0113	.120	<b>BMD58</b>	\$17.00
	3/4" Narrow	.125	12	.045	.045	.0191	.156	<b>BMD37</b>	\$17.00
		.187	12	.045	.045	.0191	.156	<b>BMD38</b>	\$17.00
		.187	12	.109	.045	.0191	.156	<b>BMD39</b>	\$17.00
	.187	12	.109	.063	.0374	.218	<b>BMD40</b>	\$17.00	
3/4"	.375	15	.045	.045	.0238	.174	<b>BMD35</b>	\$17.00	
	.375	9	.094	.045	.0143	.135	<b>BMD36</b>	\$17.00	
	.375	9	.094	.094	.0625	.282	<b>BMD98</b>	\$17.00	
	.375	9	.125	.045	.0143	.135	<b>BMD34</b>	\$17.00	