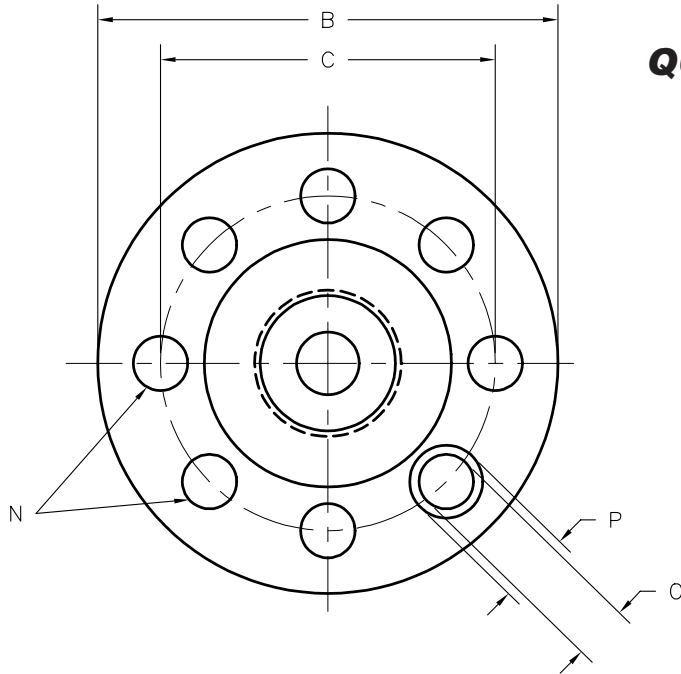
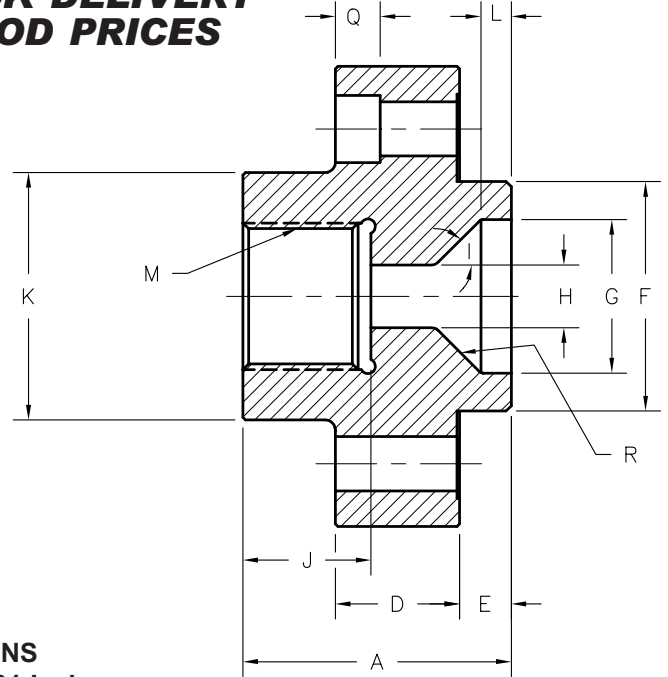




BARREL END CAPS AND ADAPTORS



**QUICK DELIVERY
GOOD PRICES**



DIMENSIONS
Specify to 0.001 Inch

Machine Make

A. Overall Length

B. Flange Diameter

C. Bolt Circle Diameter

D. Flange Width

E. Length of Pilot

F. Pilot Diameter

G. Rear Opening

H. Bore Diameter

I. Cone Angle

J. Depth of Female Thread

K. Nozzle Support Diameter

L. Depth of Straight Bore

M. Thread Size & Type

N. Number of Bolt Holes

O. Bolt Hole Diameter

P. Counterbore Dia (if any)

Q. Counterbore Depth (if any)

R. Specify Steel

Indicate thermocouple hole position, thread size and depth.

**ANY MAKE OR MODEL
END CAP CAN BE MADE
TO YOUR SAMPLE OR DRAWING**

Normally our end caps are made from H-13 Tool Steel heat treated, however we will make them from D-2 heat treated or super wear resistant CPM 9V Steel heat treated. For corrosion resistant specify CPM S90V Stainles Tool Steel Please specify!

© Copyright 2023 Plastic Process Equipment, Inc.
Note: PPE customers may reproduce this form only in it's entirety.



PLASTIC PROCESS EQUIPMENT, INC.

8303 CORPORATE PARK DRIVE
MACEDONIA, OHIO 44056-2300
216-367-7000 • FAX: 216-367-7022
TOLL FREE: 800-321-0562

6385 MONTESSOURI STREET
LAS VEGAS, NEVADA 89113-1186
702-433-6385 • FAX: 702-433-6388
TOLL FREE: 800-258-8877

www.ppe.com
e-mail: sales@ppe.com

**Toll Free: USA, Canada & Mexico
800-362-0706**

Order Fax: 800-223-8305