



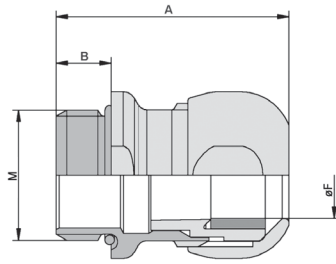
CE RoHS

# STRAIN RELIEF GLANDS

## METRIC THREADS



### STAINLESS STEEL BODY



- Heavy duty design provides great pullout strength and very reliable strain relief.
- Highly corrosion-resistant
- Smooth surface - No edges
- IP68/69K protection
- Withstands high pressure and high temperature wash downs (70 PSI)
- Temp Range: -40°C to +100°C

### Strain Relief Glands - Metric Thread (M)

| Part No. | M Thread Size | ØF Wire O.D.  | A     | B     | Price   |
|----------|---------------|---------------|-------|-------|---------|
| 53806739 | M12 x 1.5     | 0.157 - 0.275 | 1.154 | 0.256 | \$35.50 |
| 53806740 | M16 x 1.5     | 0.197 - 0.394 | 1.276 | 0.275 | \$42.40 |
| 53806741 | M20 x 1.5     | 0.275 - 0.512 | 1.398 | 0.315 | \$46.75 |
| 53806742 | M25 x 1.5     | 0.354 - 0.669 | 1.544 | 0.315 | \$50.10 |
| 53806743 | M32 x 1.5     | 0.433 - 0.827 | 1.757 | 0.354 | \$63.10 |

### Reducer Strain Relief Glands - Metric Thread (M)

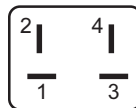
| Part No. | M Thread Size | ØF Wire O.D.  | A     | B     | Price   |
|----------|---------------|---------------|-------|-------|---------|
| 53806749 | M12 x 1.5     | 0.118 - 0.197 | 1.154 | 0.256 | \$36.50 |
| 53806750 | M16 x 1.5     | 0.177 - 0.275 | 1.276 | 0.275 | \$43.40 |
| 53806751 | M20 x 1.5     | 0.236 - 0.394 | 1.398 | 0.315 | \$47.75 |
| 53806752 | M25 x 1.5     | 0.275 - 0.512 | 1.544 | 0.315 | \$51.10 |
| 53806753 | M32 x 1.5     | 0.315 - 0.591 | 1.757 | 0.354 | \$64.10 |



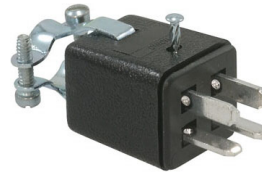
# JONES PLUGS/SOCKETS

## 4 PIN CONNECTORS

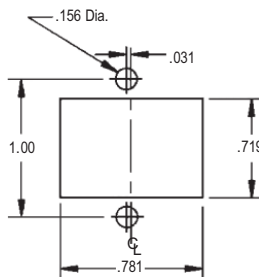
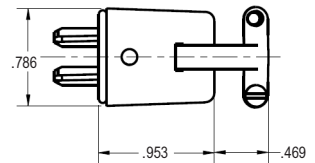
- Compatible with Cinch Series 300.
- 10 A Capacity
- Up to 250 VAC
- Use in Cable-to-Panel and Cable-to-Cable applications.
- Polarized to prevent incorrect insertion.
- Max Operating Temp: 215°F (102°C)
- Designed for medium & light duty applications.
- Cable clamps included.



4 Contact Polarizing Pattern



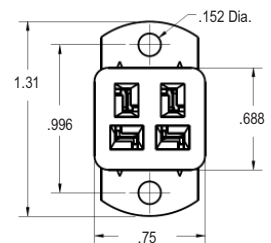
P-304-CCT



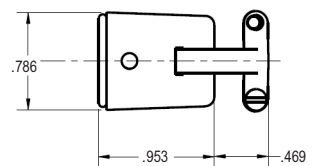
Panel Cut Out Dimensions



S-304-AB



S-304-CCT



| PART NO.  | DESCRIPTION                     | QUANTITY PRICES |        |        |
|-----------|---------------------------------|-----------------|--------|--------|
|           |                                 | 1-9             | 10-99  | 100+   |
| P-304-CCT | 4 PIN PLUG WITH STRAIN RELIEF   | \$4.45          | \$3.85 | \$3.25 |
| S-304-AB  | 4 PIN SOCKET WITH ANGLE BRACKET | \$2.95          | \$2.45 | \$1.95 |
| S-304-CCT | 4 PIN SOCKET WITH STRAIN RELIEF | \$4.15          | \$3.55 | \$2.95 |



## PLASTIC PROCESS EQUIPMENT, INC.

8303 CORPORATE PARK DRIVE  
MACEDONIA, OHIO 44056-2300  
216-367-7000 • FAX: 216-367-7022  
TOLL FREE: 800-321-0562

6385 MONTESSOURI STREET  
LAS VEGAS, NEVADA 89113-1186  
702-433-6385 • FAX: 702-433-6388  
TOLL FREE: 800-258-8877

www.ppe.com  
e-mail: sales@ppe.com

Toll Free: USA, Canada & Mexico  
**800-362-0706**

Order Fax: 800-223-8305