



# PANEL JACKS

## FOR QUICK AND EASY THERMOCOUPLE CONNECTIONS



- 0.090" THICK ALUMINUM PANEL.
- CALIBRATION AND POLARITY MARKED.
- PANELS COME WITH JACKS AS SHOWN.

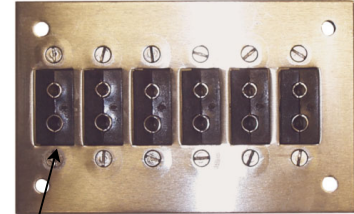
**ISO-9001**  
 MANUFACTURED IN A  
 QUALITY SYSTEM CERTIFIED  
 FACILITY.

### STANDARD SIZE PANEL JACKS W/JACKS

Accepts Standard Connector Plugs

NUMBER OF JACKS	PANEL DIMENSIONS	TYPE J	PRICES		TYPE K	PRICES	
		PART NO.	1-11	12+	PART NO.	1-11	12+
1	2" x 1-1/2"	PMF-J	\$6.60	\$6.30	PMF-K	\$7.00	\$6.70
1	2-3/4" x 4-1/2"	PMF-1J	\$15.50	\$14.80	PMF-1K	\$15.90	\$15.20
2	2-3/4" x 4-1/2"	PMF-2J	\$17.55	\$16.75	PMF-2K	\$18.45	\$17.60
3	2-3/4" x 4-1/2"	PMF-3J	\$23.00	\$21.95	PMF-3K	\$24.30	\$23.20
4	2-3/4" x 4-1/2"	PMF-4J	\$26.85	\$25.65	PMF-4K	\$28.60	\$27.35
5	2-3/4" x 4-1/2"	PMF-5J	\$31.80	\$30.35	PMF-5K	\$34.00	\$32.45
6	2-3/4" x 4-1/2"	PMF-6J	\$33.75	\$32.25	PMF-6K	\$36.40	\$34.75
10	3-1/4" x 8-3/4"	PMF-10J	\$60.35	\$57.65	PMF-10K	\$64.70	\$61.80
20	3-1/2" x 19"	PMF-20J	\$96.10	\$91.80	PMF-20K	\$104.85	\$100.15

Model PMF-6J shown



Spare Female Jacks (no screws)

**Type J**

Part No. **PMF-JSJ** ..... \$3.45 ea.

**Type K**

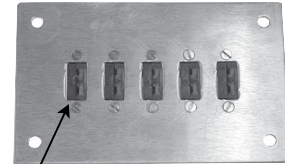
Part No. **PMF-KSJ** ..... \$3.95 ea.

### MINIATURE PANEL JACKS W/JACKS

Accepts Miniature Connector Plugs

NUMBER OF JACKS	PANEL DIMENSIONS	TYPE J	PRICES		TYPE K	PRICES	
		PART NO.	1-11	12+	PART NO.	1-11	12+
1	2" x 1-1/2"	PMM-J	\$6.90	\$6.55	PMM-K	\$7.10	\$6.75
1	2-3/4" x 4-1/2"	PMM-1J	\$12.55	\$11.90	PMM-1K	\$13.00	\$12.35
2	2-3/4" x 4-1/2"	PMM-2J	\$17.30	\$16.40	PMM-2K	\$17.95	\$17.00
3	2-3/4" x 4-1/2"	PMM-3J	\$21.95	\$20.80	PMM-3K	\$22.75	\$21.55
4	2-3/4" x 4-1/2"	PMM-4J	\$28.40	\$26.90	PMM-4K	\$29.45	\$27.90
5	2-3/4" x 4-1/2"	PMM-5J	\$32.30	\$30.65	PMM-5K	\$33.50	\$31.70
6	2-3/4" x 4-1/2"	PMM-6J	\$36.75	\$34.85	PMM-6K	\$38.15	\$36.10
10	3-1/4" x 8-3/4"	PMM-10J	\$57.30	\$54.35	PMM-10K	\$59.45	\$56.25

Model PMM-5J shown



Spare Mini Female Jacks (no screws)

**Type J**

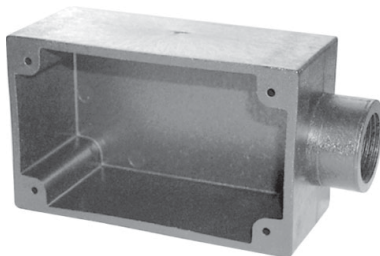
Part No. **PMM-JMJ** ..... \$3.50 ea.

**Type K**

Part No. **PMM-KMJ** ..... \$3.60 ea.

## OUTLET BOXES

### FOR USE WITH 2-3/4" x 4-1/2" PANELS



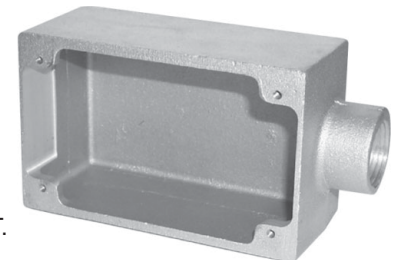
**GLASS REINFORCED NYLON BOX**

Part No. **PMB-N** ..... \$6.25



**ALUMINUM STANDARD ELECTRICAL FS BOX\***

Part No. **PMB-A** ..... \$55.00



**HEAVY DUTY CAST ALUMINUM BOX**

Part No. **PMB-CA** ..... \$95.00

\* ALUMINUM STANDARD BOX CANNOT BE USED WITH PMF-5J (5K) OR PMF-6J (6K)



## PLASTIC PROCESS EQUIPMENT, INC.

**EAST** 8303 CORPORATE PARK DRIVE  
 MACEDONIA, OHIO 44056-2300  
 216-367-7000 • FAX: 216-367-7022  
 TOLL FREE: 800-321-0562

**WEST** 6385 MONTESSOURI STREET  
 LAS VEGAS, NEVADA 89113-1186  
 702-433-6385 • FAX: 702-433-6388  
 TOLL FREE: 800-258-8877

[www.ppe.com](http://www.ppe.com)  
 e-mail: sales@ppe.com

Toll Free: USA, Canada & Mexico  
**800-362-0706**

Order Fax: 800-223-8305