



# MECHANICAL FLOWMETERS

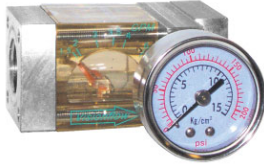


Measures Flowrates - Temperatures - Pressures  
6 Models from .5 up to 100 G.P.M.

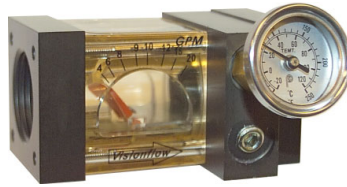
**MORE MODELS  
8 COMBINATIONS**



**FLOWMETER**



**FLOWMETER PLUS PRESSURE**



**FLOWMETER PLUS TEMPERATURE**

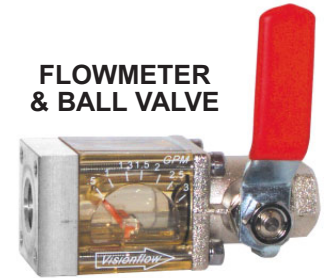


**FLOWMETER PLUS PRESSURE & TEMPERATURE**

**NOW AVAILABLE WITH BALL VALVES**

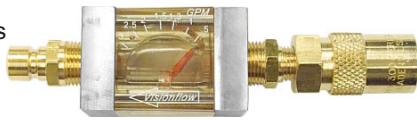


**HOT OIL & WATER FLOWMETER**

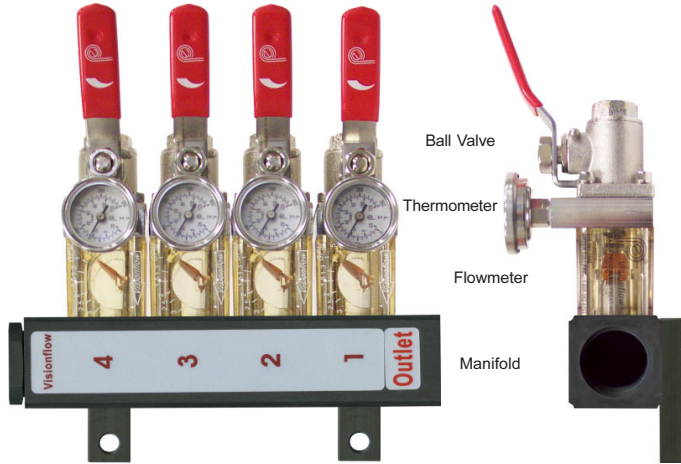


**FLOWMETER & BALL VALVE**

Quick-connect fittings can be attached for quick & easy trouble shooting.



**ALSO AVAILABLE OUTLET MANIFOLD W/ FLOWMETERS, THERMOMETERS, & BALL VALVES**



## GENERAL DESCRIPTION

PPE mechanical flowmeters are durable, vane-operated devices which provide visual indication of flowrate in many different styles and sizes. Rugged wetted parts are compatible with many process liquids.

Optional temperature, pressure gauges and ball valves add functionality and flexibility to Visionflow® flowmeters. Brass quick-connect fittings can be attached to the flowmeters to create an excellent, portable tool for determining flow and locating clogged lines.

## FEATURES AND BENEFITS

- **Compact Size** works well in restricted-space locations.
- **Rugged construction** gives years of dependable service.
- **Variety of inlet sizes** provides exactly the right connection.
- **240°F (115°C) Temperature Rating** allows installation into a wide range of applications.
- **Optional Temperature and Pressure Gauges** give instant access to pressure and temperature information in addition to flow in one unit.

## SPECIFICATIONS: See Product Page!

Operating Temperature ..... 240°F max. (115°C max.)  
 Pressure ... 100 psi max. (7 kg/cm<sup>2</sup>) & 150 psi max. (10 kg/cm<sup>2</sup>)  
 Accuracy ..... ±10%  
 Thermometer ..... 0° to 250°F (-20° to 120°C)  
 Pressure Gauge ..... 0 to 210 psi (0 to 15 kg/cm<sup>2</sup>)

## MATERIALS: See Product Page!

End Caps ..... Brass or Aluminum  
 Body ..... Anodized Aluminum or Polysulfone  
 Vane ..... Stainless Steel or Glass-Filled Nylon  
 Spring ..... Stainless Steel  
 Pin ..... Stainless Steel  
 O-Rings ..... EDP  
 Cap Screws ..... Stainless Steel

Molders know a certain rate of flow is needed to achieve turbulent flow in cooling lines. This concept applies to most cooling applications using a water-based coolant mixture. This chart is provided for reference only.

Cooling Line Inside Diameter	Turbulent Flowrate	
	gpm	lpm
0.250 in. 6.3 mm	0.6	2.3
0.375 in. 9.5 mm	0.9	3.5
0.5 in. 12.7 mm	1.2	5.0
0.625 in. 15.8 mm	1.5	5.8
0.75 in. 19.0 mm	1.9	7.3
1.0 in. 25.4 mm	2.5	9.6



## PLASTIC PROCESS EQUIPMENT, INC.

8303 CORPORATE PARK DRIVE  
 MACEDONIA, OHIO 44056-2300  
 216-367-7000 • FAX: 216-367-7022  
 TOLL FREE: 800-321-0562

6385 MONTESSOURI STREET  
 LAS VEGAS, NEVADA 89113-1186  
 702-433-6385 • FAX: 702-433-6388  
 TOLL FREE: 800-258-8877

[www.ppe.com](http://www.ppe.com)  
 e-mail: [sales@ppe.com](mailto:sales@ppe.com)

Toll Free: USA, Canada & Mexico  
**800-362-0706**

Order Fax: 800-223-8305