



SOCKET TYPE WATER JUMPERS

FOR USE WITH LOCK-ON HOSE PLUS SAFETY TWIST LOCK

BETTER FLOW THAN COMPETING SOCKETS

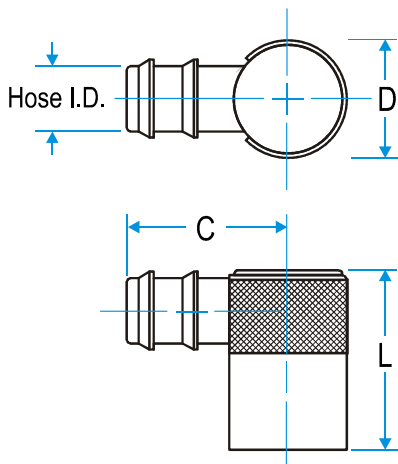
- ★ **SOCKET HAS SAFETY TWIST LOCK.**
 - Smooth unrestricted internal flow, path allows 100% flow rate of hose used.
 - All brass and stainless steel construction.
 - Viton seals for temperatures to 400°F.
 - Keeps hoses close to the mold.
 - Fits DME, Parker, Foster, and others.
 - Accepts standard Lock-on type hose.
 - Uses quick disconnect sockets with Lock-on barbs for fast installation.



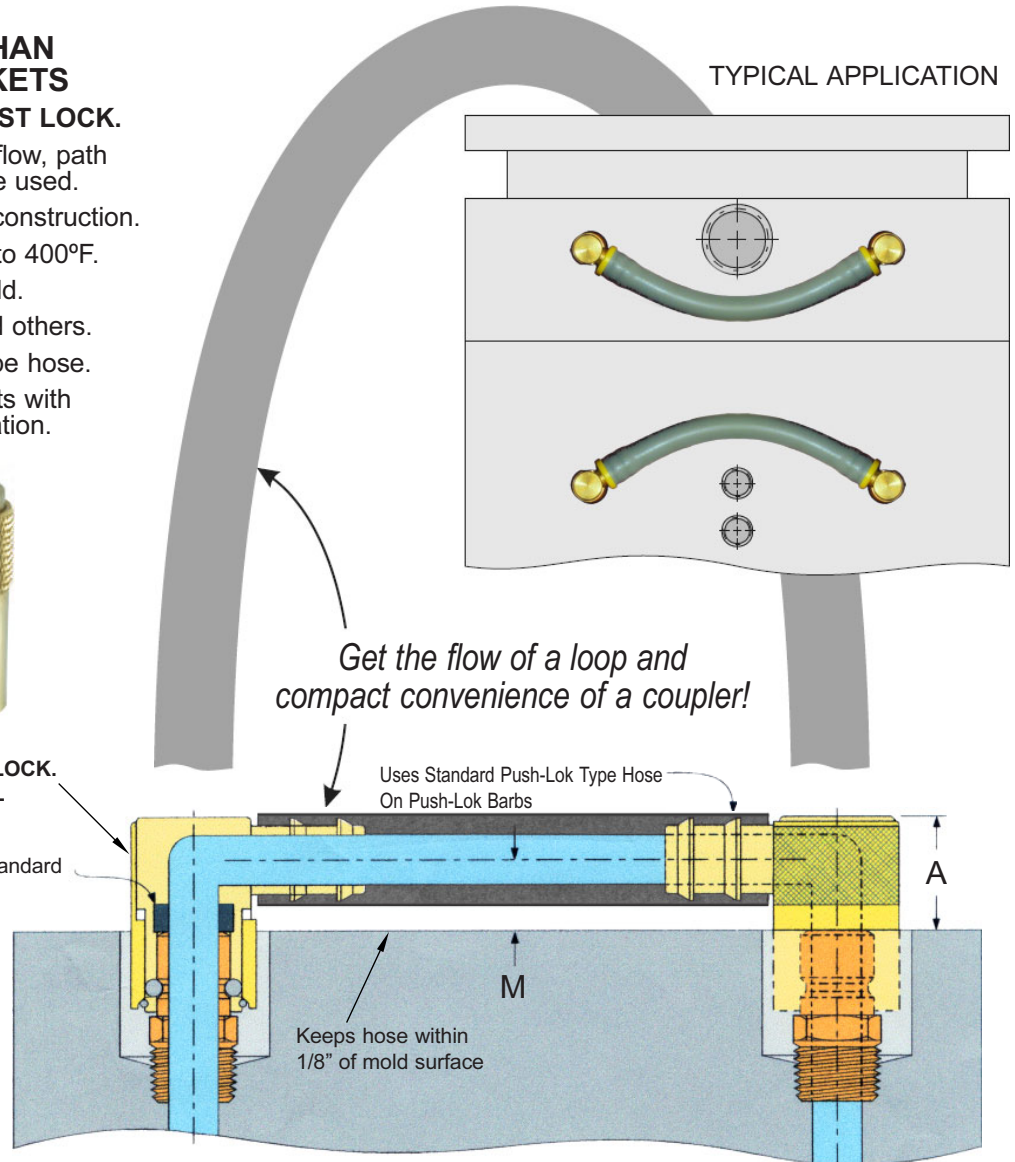
- ★ **SOCKET SLEEVE TWISTS TO LOCK. HELPS PREVENT ACCIDENTAL DISCONNECT.**

Viton Seals Standard

LOW PROFILE UNRESTRICTED FLOW



TYPICAL APPLICATION



PART NO.	FITS PLUGS SERIES NO.	HOSE I.D.	DIMENSIONS					PRICE EACH
			L	C	M	A	D	
WJ-204	200	1/4"	1"	1 1/4"	3/8"	5/8"	5/8"	\$5.20
WJ-206	200	3/8"	1"	1 1/4"	3/8"	5/8"	5/8"	\$5.20
WJ-306	300	3/8"	1-7/16"	1-9/16"	1/2"	7/8"	7/8"	\$6.15
WJ-308	300	1/2"	1-7/16"	1-9/16"	1/2"	7/8"	7/8"	\$6.15
WJ-508	500	1/2"	2-1/8"	1-7/8"	7/8"	1-3/8"	1-1/4"	\$12.45
WJ-512	500	3/4"	2-1/8"	2"	7/8"	1-3/8"	1-1/4"	\$12.45

WE STOCK WHAT WE SELL!



PLASTIC PROCESS EQUIPMENT, INC.

8303 CORPORATE PARK DRIVE
 MACEDONIA, OHIO 44056-2300
 216-367-7000 • FAX: 216-367-7022
 TOLL FREE: 800-321-0562

6385 MONTESSOURI STREET
 LAS VEGAS, NEVADA 89113-1186
 702-433-6385 • FAX: 702-433-6388
 TOLL FREE: 800-258-8877

www.ppe.com
 e-mail: sales@ppe.com

Toll Free: USA, Canada & Mexico
800-362-0706

Order Fax: 800-223-8305