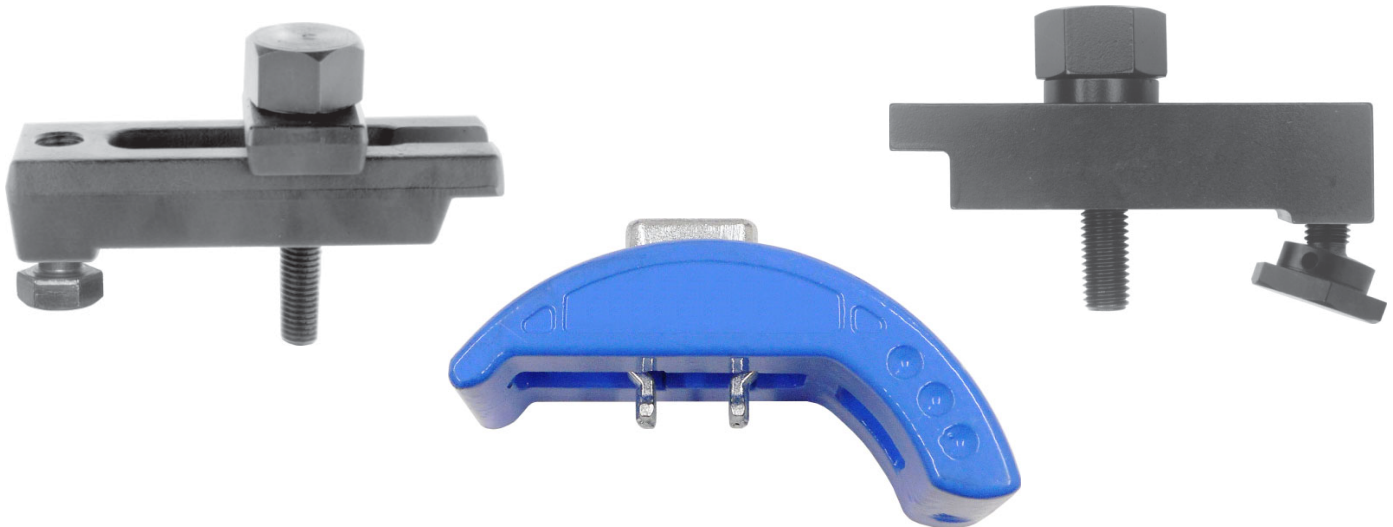




# MOLD CLAMPING ACCESSORIES

50<sup>TH</sup>  
ANNIVERSARY

## MACHINED AND FORGED MOLD CLAMPS



<p><b>CLOSED TOE CLAMPS</b></p>	<p><b>OPEN TOE CLAMPS</b></p>	<p><b>GRADE 8 BOLTS AND SOCKET HEAD CAP SCREWS</b></p>	<p><b>HEAVY DUTY BOLTS</b></p>
<p><b>HEX SOCKET KEYS</b></p>	<p><b>THREAD REPAIR INSERTS</b></p>	<p><b>SAFETY HOIST RINGS</b></p>	<p><b>HEAVY DUTY WASHERS</b></p>

## COMPARE OUR QUALITY & PRICES



**PLASTIC PROCESS EQUIPMENT, INC.**

**EAST** 8303 CORPORATE PARK DRIVE  
MACEDONIA, OHIO 44056  
216-367-7000 • FAX: 216-367-7022  
TOLL FREE: 800-321-0562

**WEST** 6385 MONTESSOURI STREET  
LAS VEGAS, NEVADA 89113  
702-433-6385 • FAX: 702-433-6388  
TOLL FREE: 800-258-8877

[www.ppe.com](http://www.ppe.com)  
e-mail: [sales@ppe.com](mailto:sales@ppe.com)

Toll Free: USA, Canada & Mexico  
**800-362-0706**

Order Fax: 800-223-8305