

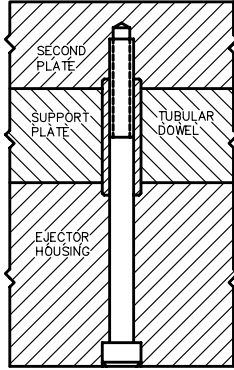
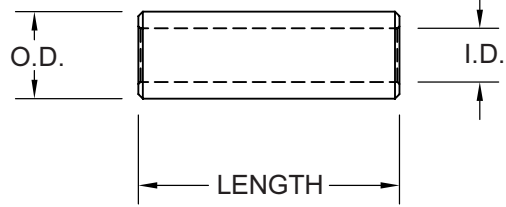


# TUBULAR DOWEL PINS

## FOR ACCURATE MOLD PLATE ALIGNMENT



**HARDENED ALLOY STEEL  
PRECISION GROUND**



PPE Tubular Dowel Pins are made of high quality alloy steel, hardened and ground to a precision finish. Use of Tubular Dowel Pins allow you to save space by using the cap screw as an alignment pin leaving more room for water passages.

*Discontinued*

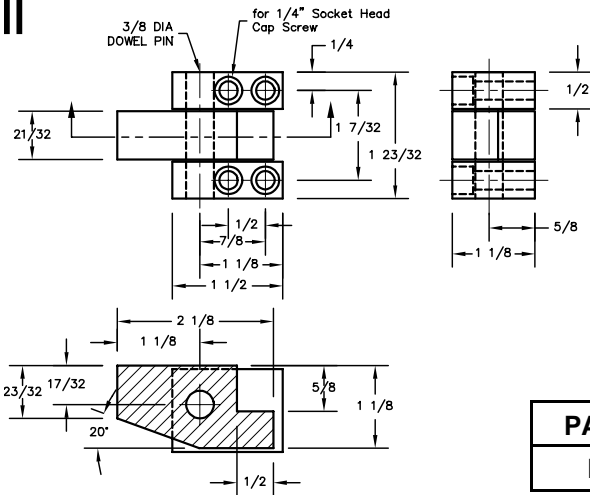
To order, specify Part Number and Length. EXAMPLE: TDP038-78

Part No.	Nominal Size	O.D. ±.0002	I.D.	Length & Prices						
				3/8"	1/2"	7/8"	1-3/8"	1-7/8"	2-3/8"	2-7/8"
TDP038-	3/8"	.3752	.260	-	-	\$1.63	-	-	-	-
TDP058-	5/8"	.6252	.385	-	-	-	-	-	-	-
TDP034-	3/4"	.7502	.510	-	-	-	-	-	-	-
TDP078-	7/8"	.8752	.635	-	-	-	-	-	\$3.00	-



# REVERSIBLE ACCELERATED KNOCKOUT

## PIVOT TYPE FOR FAST EJECTION

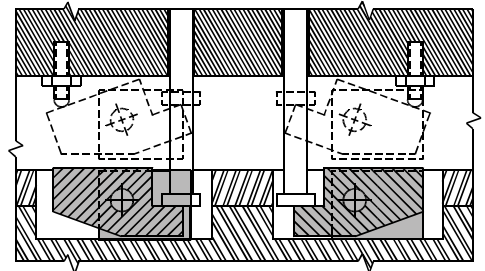


PPE Reversible Accelerated Knock-outs use pivot type motion for accelerated ejection. When installed as shown in drawing they can accommodate Pin head diameters up to 5/8" without grinding. Reversing the knock-out lever as shown in photo allows use of larger pins without grinding the pin head.

These units can be top mounted or inserted into the ejector plate. They are precision made of high quality steel for years of dependable service.



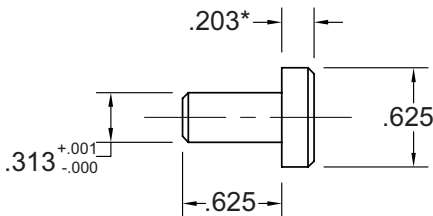
PART NO.	PRICE
RKO-1	\$28.95 ea.



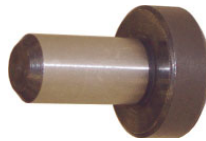
# STOP PINS INDUSTRY STANDARD

PPE Stop Pins are precision turned and ground to within .001. This insures a tight press fit when installed. Made from 4140 HR, 28-32 Rc.

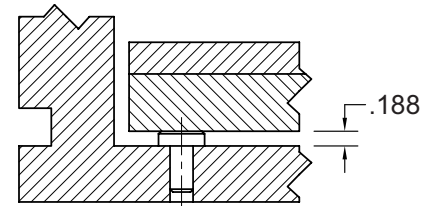
Although Mold Base assemblies have flat stop pins welded to the underside of the ejector plate, many moldmakers require these dowel-type Stop Pins for special assemblies.



\*Head thickness .020 oversize to permit fitting at assembly.



PART NO.	PRICE
SP825	\$1.10 ea.



TYPICAL INSTALLATION



## PLASTIC PROCESS EQUIPMENT, INC.

8303 CORPORATE PARK DRIVE  
MACEDONIA, OHIO 44056-2300  
216-367-7000 • FAX: 216-367-7022  
TOLL FREE: 800-321-0562

6385 MONTESSOURI STREET  
LAS VEGAS, NEVADA 89113-1186  
702-433-6385 • FAX: 702-433-6388  
TOLL FREE: 800-258-8877

www.ppe.com  
e-mail: sales@ppe.com

Toll Free: USA, Canada & Mexico  
**800-362-0706**

Order Fax: 800-223-8305