



AIR POPPET VALVES FOR PART EJECTION

CUMSA

ISO-9001

MANUFACTURED IN A QUALITY SYSTEM CERTIFIED FACILITY.

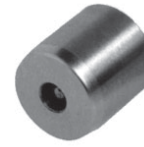
FEATURES

- Filtered model available to prevent debris from entering valve.
- Eliminate ejection problems with deep molded parts that commonly create gas traps or vacuum conditions.
- Precision ground valve seat eliminates the possibility of flash entering the valve during injection.
- Valve opens automatically when air pressure is applied. Max. working pressure: 87 P.S.I. (6 BARS). Min. working pressure: 21 P.S.I. (1.5 BARS).
- Made from AISI 420 stainless, 50-55 Rc.
- Tested to one million cycles.
- 7 diameters available.

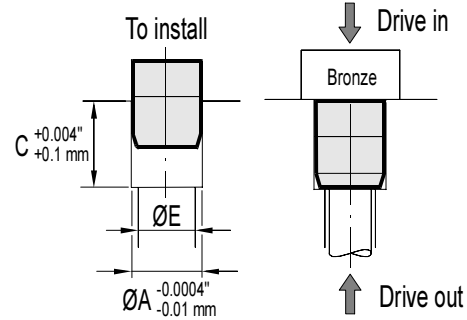
FILTERED MODEL



STANDARD MODEL

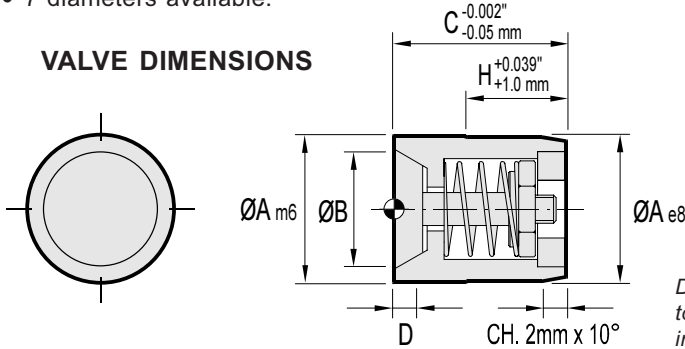


HOLE DIMENSIONS & INSTALLATION



Drill a hole per the specifications listed. Insert has an undersized portion to allow partial entry into the drilled hole. Use a bronze block against the insert face and drive down into position. To remove, drive out from the rear.

VALVE DIMENSIONS



DIMENSIONS & TOLERANCES

ØA BODY DIAMETER		m6 TOLERANCE		e8 TOLERANCE		ØB		C		D		H	
mm	inches	mm	inches	mm	inches	mm	inches	mm	inches	mm	inches	mm	inches
5.0	0.1969	+0.004	+0.0001	-0.004	-0.0001	3.0	0.1181	12.0	0.4724	1.5	0.0591	7.0	0.2756
		+0.012	+0.0005	-0.012	-0.0005								
6.0	0.2362	+0.006	+0.0002	-0.025	-0.0009	5.2	0.2040	12.0	0.4724	1.5	0.0591	7.0	0.2756
		+0.015	+0.0006	-0.047	-0.0017								
8.0	0.3150	+0.006	+0.0002	-0.025	-0.0009	6.5	0.2559	12.0	0.4724	1.5	0.0591	7.0	0.2756
		+0.015	+0.0006	-0.047	-0.0017								
10.0	0.3937	+0.007	+0.0003	-0.032	-0.0013	8.0	0.3150	12.0	0.4724	2.0	0.0787	7.0	0.2756
		+0.018	+0.0007	-0.059	-0.0023								
12.0	0.4724	+0.007	+0.0003	-0.032	-0.0013	10.0	0.3937	12.0	0.4724	2.5	0.0984	7.0	0.2756
		+0.018	+0.0007	-0.059	-0.0023								
16.0	0.6299	+0.007	+0.0003	-0.032	-0.0013	13.0	0.5118	20.0	0.7874	3.0	0.1181	12.0	0.4724
		+0.018	+0.0007	-0.059	-0.0023								
20.0	0.7874	+0.008	+0.0003	-0.040	-0.0016	17.0	0.6693	20.0	0.7874	3.5	0.1377	12.0	0.4724
		+0.021	+0.0008	-0.073	-0.0029								

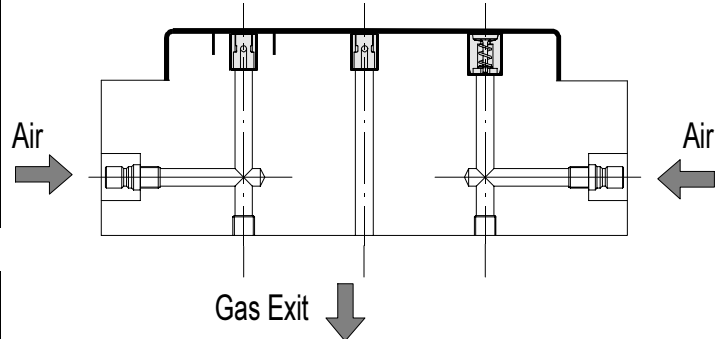
STANDARD MODEL

PART NO.	BODY DIAMETER A		ØE		PRICE
	mm	inches	mm	inches	
VA05	5.0	0.1969	4.0	0.1575	\$55.25
VA06	6.0	0.2362	4.0	0.1575	\$55.25
VA08	8.0	0.3150	4.0	0.1575	\$55.25
VA10	10.0	0.3937	8.0	0.3150	\$55.25
VA12	12.0	0.4724	10.0	0.3937	\$59.75
VA16	16.0	0.6299	12.0	0.4724	\$64.50
VA20	20.0	0.7874	16.0	0.6299	\$72.50

FILTERED MODEL

PART NO.	BODY DIAMETER A		ØE		PRICE
	mm	inches	mm	inches	
FV16	16.0	0.6299	14.0	0.5512	\$82.00
FV20	20.0	0.7874	18.0	0.7087	\$88.00

TYPICAL APPLICATION



PLASTIC PROCESS EQUIPMENT, INC.

8303 CORPORATE PARK DRIVE
MACEDONIA, OHIO 44056-2300
216-367-7000 • FAX: 216-367-7022
TOLL FREE: 800-321-0562

6385 MONTESSOURI STREET
LAS VEGAS, NEVADA 89113-1186
702-433-6385 • FAX: 702-433-6388
TOLL FREE: 800-258-8877

www.ppe.com

e-mail: sales@ppe.com

Toll Free: USA, Canada & Mexico

800-362-0706

Order Fax: 800-223-8305