

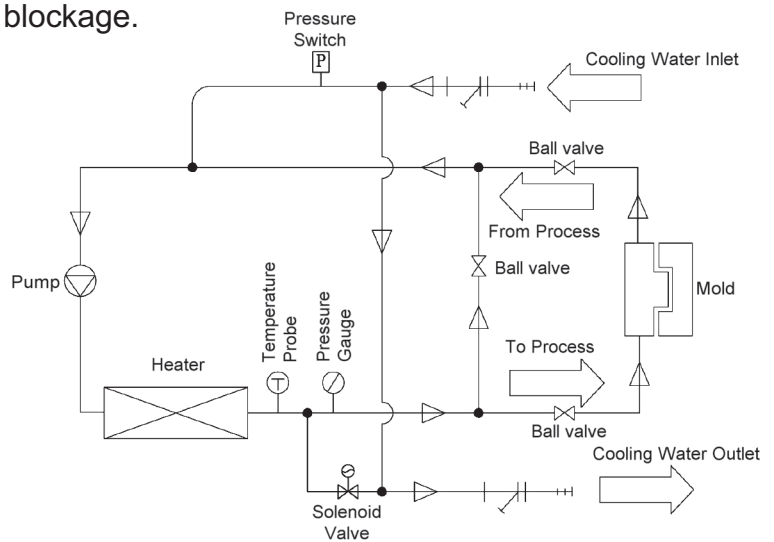
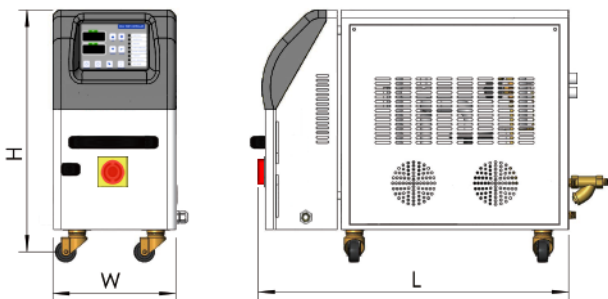


# MOLD FLUID CONTROL SYSTEMS

## HOT WATER MOLD CIRCULATOR PRESSURIZED - OPEN CIRCUIT COOLING

### FEATURES:

- Self optimizing microprocessor control with digital display of both set and process temperatures.
- Process alarms, low fluid level, pump overload, over temperature, phase reverse and fluid diagnostics.
- RS485 Communication Interface.
- High quality German pump horizontal mount for dependable flow and temperature control.
- Stainless Steel flanged pump with silicon carbide seal.
- Heavy gauge all stainless steel internal piping to avoid corrosion.
- Media: Water only, open circuit direct cooling. Incoming water supply requires 25 to 70 P.S.I.
- Maintains temperature accuracy to  $\pm 1^{\circ}\text{F}$ .
- Sealed electrical control box. Only opens with a key.
- Y-Strainer supplied on inlet water line.
- Temp. Range:  $122^{\circ}\text{F}$  to  $248^{\circ}\text{F}$  ( $50^{\circ}\text{C}$  to  $120^{\circ}\text{C}$ )
- Heater box insulated.
- Heater housing oversized to prevent scale blockage.
- Circuit protected pump and heater.
- Durable powder coated cabinet.



Our PPE Mold Fluid Controllers are a PPE exclusive only available from PPE. Do not confuse these with any other make, model or manufacturer.

### - SPECIFICATIONS & PRICES -

PUMP	VOLTAGE	AMPS	GPM @ 30 PSI	HTR KW	PIPE CONNECTIONS (NPT)				DIMENSIONS			UNIT WEIGHT	APPROX. SHIPPING WEIGHT	MODEL NUMBER	PRICE EACH
					TO PROCESS	FROM PROCESS	WATER SUPPLY	DRAIN	H	W	L				
1 HP	230/60/3	27	16	9	3/4"	3/4"	1/2"	1/2"	24"	12"	30"	129 lbs.	195 lbs.	MFT1230C	\$1,925.00
1 HP	460/60/3	13.5	16	9	3/4"	3/4"	1/2"	1/2"	24"	12"	30"	129 lbs.	195 lbs.	MFT1460C	\$1,925.00



## PLASTIC PROCESS EQUIPMENT, INC.

8303 CORPORATE PARK DRIVE  
MACEDONIA, OHIO 44056  
216-367-7000 • FAX: 216-367-7022  
TOLL FREE: 800-321-0562

6385 MONTESSOURI STREET  
LAS VEGAS, NEVADA 89113  
702-433-6385 • FAX: 702-433-6388  
TOLL FREE: 800-258-8877

www.ppe.com  
e-mail: sales@ppe.com

Toll Free: USA, Canada & Mexico  
**800-362-0706**

Order Fax: 800-223-8305