



AIR WIPES - STANDARD OR SUPER

A HARD-HITTING FULL 360° RING OF AIRFLOW TO BLOWOFF, DRY, CLEAN AND COOL PIPE, CABLE, HOSE, WIRE OR EXTRUDED SHAPES

— ALL MODELS —

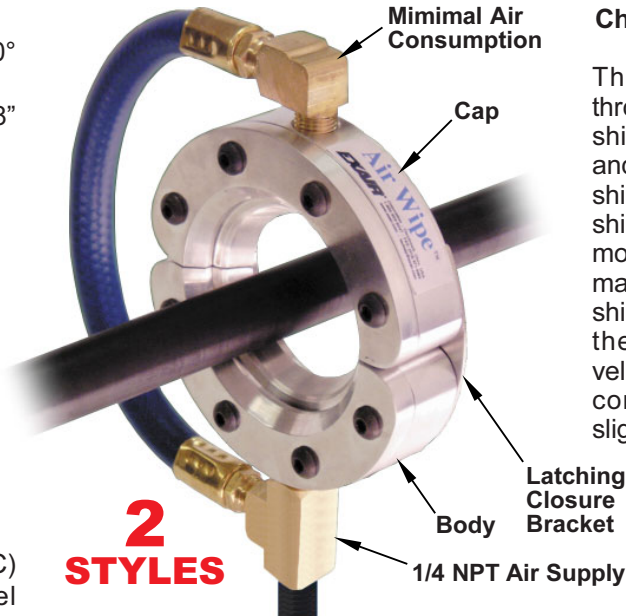
- Circular design directs constant 360° air flow around the entire surface.
- Multiple inside diameters from 3/8" thru 11"

— STANDARD AIR WIPE —

- Good for non-corrosive environments
- Aluminum
- Temperatures to 150°F (66°C)

— SUPER AIR WIPES —

- Designed for corrosive environments
- Aluminum or Stainless Steel
Aluminum Rated 400°F (204°C)
Stainless Steel Rated 800°F (427°C)
- Constructed with stainless steel screws, shims and stainless wire braided hose.



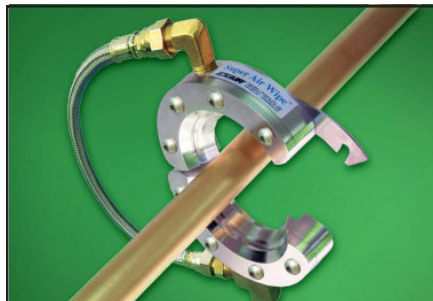
Air Wipe can be supported by your air flow supply pipe or the 1/4-20 tapped holes on the down stream side of the Air Wipe body.

Changing Velocity Performance by Adding Shims

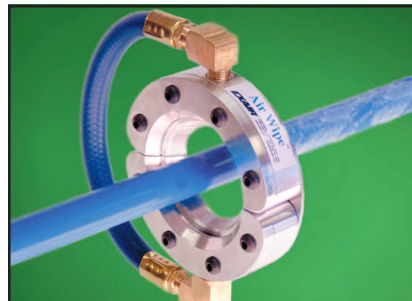
The compressed air exhausts through a gap which is set with a shim positioned between the cap and the body of the Air Wipe. It is shipped with a .002" (0.05mm) thick shim installed which works best for most applications. Force and flow may be easily increased by adding shims to open the gap. Increasing the gap opening offers higher velocity and harder hitting force. Air consumption and noise will be slightly higher.



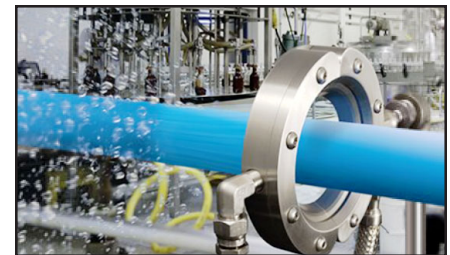
STAINLESS MODELS RATED TO 800°F



The split design of the Super Air Wipe unlatches easily to eliminate threading. Easy on - easy off.



The Standard Air Wipe removes liquid from a plastic rod. It will cool the rod.



The stainless steel Super Air Wipe is ideal for food and pharmaceutical applications.

APPLICATIONS

- Drying after washing, cleaning, plating or coating
- Blowoff dust and contaminants
- Cool hot extruded shapes
- Uniformly wipe surfaces
- Dry extruded profiles, rod and medical tubing
- Eliminate solution carryover - no cross contamination
- Blow excess water from automotive door gaskets
- Remove excess coatings, water and oil
- Dry tube, hose, wire, fiber optics
- Minimize solution loss due to drag-out
- Clean paint gun tips
- Dry screen printed or ink jetted surfaces
- Clean strips and ribbon

ADVANTAGES

- Quiet
- Low air consumption
- Uniform 360° airflow
- Stainless steel hardware resists corrosion
- Aluminum models for temperatures up to 400°F (204°C)
Stainless steel models for temperatures up to 800°F (427°C)
- Stainless steel hose supplied on sizes up to 4" (102mm)
- No electricity, no moving parts
- Non-contact - no wiper blade
- Split design - compact, rugged, easy to install
- Lightweight, low profile
- Tapped holes for mounting
- Variable force and flow
- Meets OSHA maximum dead end pressure and noise requirements



PLASTIC PROCESS EQUIPMENT, INC.

8303 CORPORATE PARK DRIVE
MACEDONIA, OHIO 44056-2300
216-367-7000 • FAX: 216-367-7022
TOLL FREE: 800-321-0562

6385 MONTESSOURI STREET
LAS VEGAS, NEVADA 89113-1186
702-433-6385 • FAX: 702-433-6388
TOLL FREE: 800-258-8877

www.ppe.com
e-mail: sales@ppe.com

Toll Free: USA, Canada & Mexico
800-362-0706

Order Fax: 800-223-8305