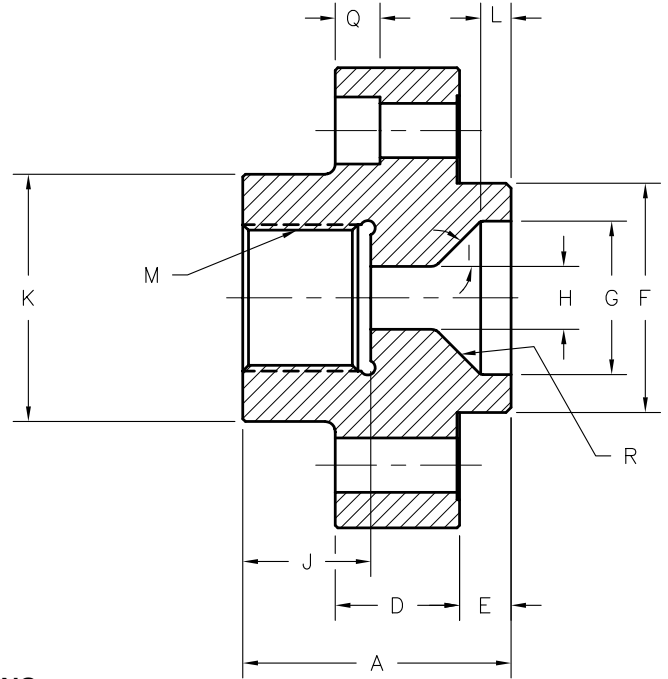
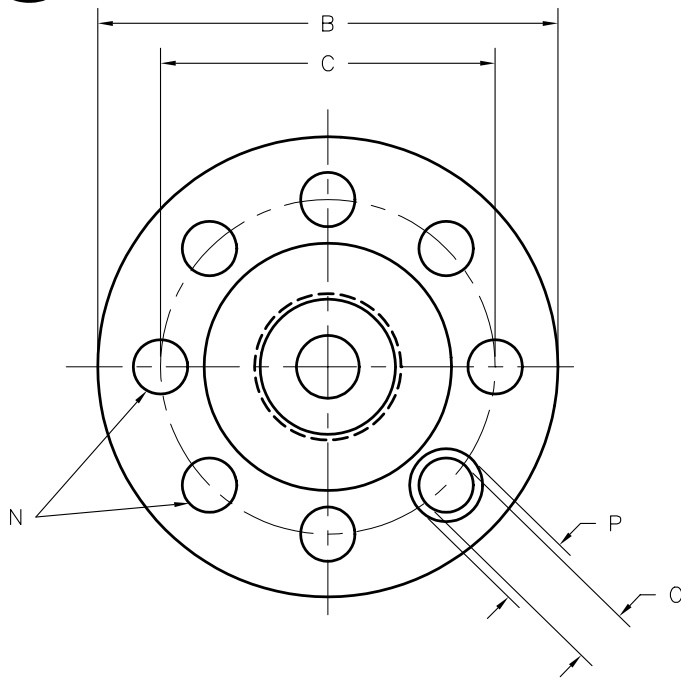




# BARREL END CAPS AND ADAPTORS



**DIMENSIONS**  
Specify to 0.001 Inch

Machine Make .....

A. Overall Length .....

B. Flange Diameter .....

C. Bolt Circle Diameter .....

D. Flange Width .....

E. Length of Pilot .....

F. Pilot Diameter .....

G. Rear Opening .....

H. Bore Diameter .....

I. Cone Angle .....

J. Depth of Female Thread .....

K. Nozzle Support Diameter .....

L. Depth of Straight Bore .....

M. Thread Type .....

N. Number of Bolt Holes .....

O. Bolt Hole Diameter .....

P. Counterbore Dia (if any) .....

Q. Counterbore Depth (if any) .....

R. Surface Treatment .....

Indicate thermocouple hole position, depth and thread size.

**ANY MAKE OR MODEL  
END CAP CAN BE MADE  
TO YOUR SAMPLE OR DRAWING**

NORMALLY OUR END CAPS ARE MADE FROM NITRALLOY STEEL NITRIDE HARDENED, HOWEVER WE WILL MAKE THEM FROM 4140 HEAT TREATED OR WEAR RESISTANT D-2 STEEL HEAT TREATED. PLEASE SPECIFY!

© Copyright 2016 Plastic Process Equipment, Inc.  
Note: PPE customers may reproduce this form only in it's entirety.



**PLASTIC PROCESS EQUIPMENT, INC.**

www.ppe.com • e-mail: sales@ppe.com

6385 Montessouri Street, Las Vegas, Nevada 89113  
PPE WEST 702-433-6385 • 800-258-8877 • Fax: 702-433-6388

11218 Challenger Avenue, Odessa, Florida 33556  
PPE SOUTH 727-834-8888 • 800-282-6783 • Fax: 727-834-8873

8303 CORPORATE PARK DRIVE, MACEDONIA (Cleveland), OHIO 44056, USA

Toll Free: USA, Canada & Mexico  
**800-362-0706**

216-367-7000 • Toll Free: 800-321-0562 • Fax: 216-367-7022 • Order Fax: 800-223-8305