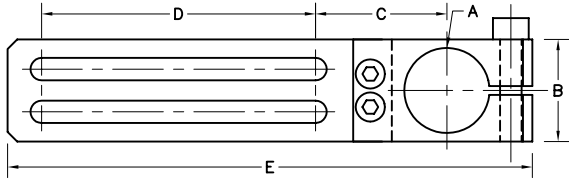


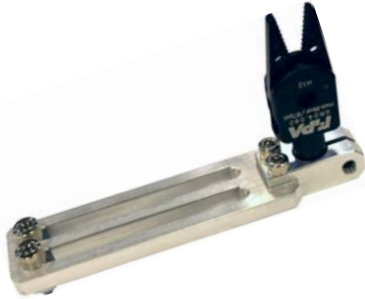


# END OF ARM TOOLING PARTS FOR ROBOTIC SPRUE PICKERS

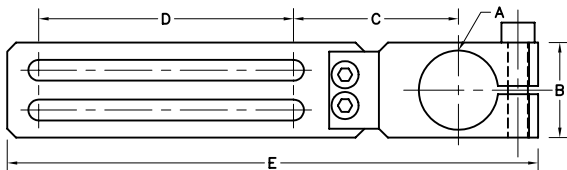


## Fixed Angle Arms

These Angle Arms are made of lightweight aluminum plate for solid holding power. The head is slotted so the mounting bracket is locked in place.



PART NO.	DESCRIPTION	A dia.	B	C	D	E	F	PRICE
TOP22610	FIXED HEAD TOOL CLAMP	10mm	25mm	24mm	42mm	89mm	6mm	\$18.92
TOP22810	FIXED HEAD TOOL CLAMP	10mm	25mm	24mm	64.5mm	112mm	6mm	\$20.92
TOP226620	FIXED HEAD TOOL CLAMP	20mm	25mm	30mm	42mm	100mm	6mm	\$22.95
TOP228820	FIXED HEAD TOOL CLAMP	20mm	25mm	30mm	64.5mm	123mm	6mm	\$24.65



## Swivel Angle Arms

These Angle Arms swivel so that the tooling can be held at any angle. Made of lightweight aluminum plate for solid holding power. The head can be rotated 360° and locks in place with an Allen head screw.



PART NO.	DESCRIPTION	A	B	C	D	E	F	PRICE
TOP22610S	SWIVEL HEAD TOOL CLAMP	10mm	25mm	36.5mm	42mm	101mm	6mm	\$19.92
TOP22810S	SWIVEL HEAD TOOL CLAMP	10mm	25mm	36.5mm	64.5mm	124mm	6mm	\$21.91
TOP226620S	SWIVEL HEAD TOOL CLAMP	20mm	25mm	42mm	42mm	111mm	6mm	\$23.75
TOP228820S	SWIVEL HEAD TOOL CLAMP	20mm	25mm	42mm	64.5mm	134mm	6mm	\$25.50



**PLASTIC PROCESS EQUIPMENT, INC.**

www.ppe.com • e-mail: sales@ppe.com

**PPE WEST** 6385 Montessouri Street, Las Vegas, Nevada 89113  
702-433-6385 • 800-258-8877 • Fax: 702-433-6388

**PPE SOUTH** 11218 Challenger Avenue, Odessa, Florida 33556  
727-834-8888 • 800-282-6783 • Fax: 727-834-8873

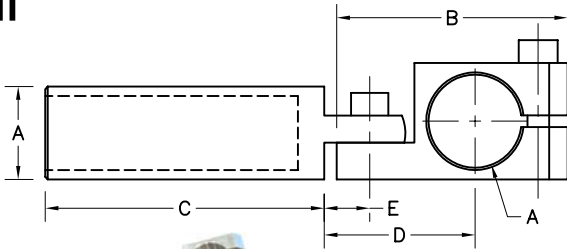
8303 CORPORATE PARK DRIVE, MACEDONIA (Cleveland), OHIO 44056, USA

Toll Free: USA, Canada & Mexico  
**800-362-0706**

**PPE** 216-367-7000 • Toll Free: 800-321-0562 • Fax: 216-367-7022 • Order Fax: 800-223-8305



# END OF ARM TOOLING PARTS FOR ROBOTIC SPRUE PICKERS

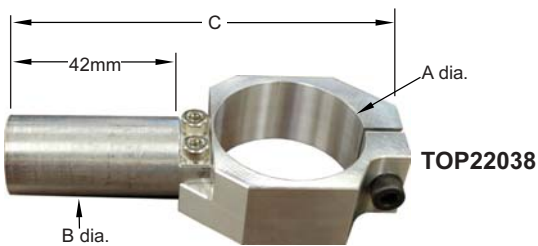


## Elbow Arms

These Elbow Arms are made of lightweight aluminum. The head pivots 90° in either direction for full range of mounting options. Available in both 20mm and 10mm diameters.

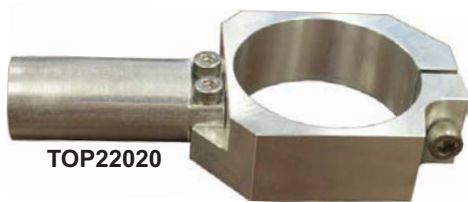


PART NO.	DESCRIPTION	A	B	C	D	E	PRICE
TOP22060	ELBOW ARM CLAMP	10mm	33.5mm	35mm	20mm	7.5mm	\$19.97
TOP22120	ELBOW ARM CLAMP	10mm	33.5mm	82mm	20mm	7.5mm	\$23.85
TOP22100	ELBOW ARM CLAMP	20mm	53.5mm	60mm	33mm	9.5mm	\$31.00
TOP22190	ELBOW ARM CLAMP	20mm	53.5mm	135mm	33mm	9.5mm	\$32.75
TOP220001	20mm ELBOW ONLY	20mm	53.5mm	-	33mm	9.5mm	\$12.74
TOP22000	10mm FRAME MOUNT	10mm	-	-	-	-	\$10.74
TOP22001	20mm FRAME MOUNT	20mm	-	-	-	-	\$12.74



## Nipper Holders

These Nipper Holders are designed to hold standard size pneumatic nippers. Constructed of lightweight aluminum they are very rigid to provide precise placement of the nipper.



PART NO.	A	B	C
TOP22038	1.5"	20mm	99mm
TOP22020	45mm	20mm	107mm
TOP22030	55mm	20mm	118mm

PART NO.	DESCRIPTION	PRICE
TOP22038	1.5" Nipper Holder (for SM-100)	\$37.60
TOP22020	45mm Nipper holder	\$37.60
TOP22030	55mm Nipper Holder	\$41.15



**PLASTIC PROCESS EQUIPMENT, INC.**

www.ppe.com • e-mail: sales@ppe.com

6385 Montessouri Street, Las Vegas, Nevada 89113  
PPE WEST 702-433-6385 • 800-258-8877 • Fax: 702-433-6388

11218 Challenger Avenue, Odessa, Florida 33556  
PPE SOUTH 727-834-8888 • 800-282-6783 • Fax: 727-834-8873

8303 CORPORATE PARK DRIVE, MACEDONIA (Cleveland), OHIO 44056, USA

Toll Free: USA, Canada & Mexico  
**800-362-0706**

216-367-7000 • Toll Free: 800-321-0562 • Fax: 216-367-7022 • Order Fax: 800-223-8305