



AIR OPERATED GATE CUTTERS

REDUCES OPERATOR FATIGUE – LOWERS YOUR CUTTER COSTS

20 MODELS – LIGHTWEIGHT – USES LOW AIR PRESSURE

HS-3 Hand-Held Model

62 lbs. Cutting Pressure
0.04" dia. cutting capacity.

4-3/8" O.A. Length
Weight 4.0 oz.
13/16" body dia.



Model HS-3 **\$76.10**
Uses blades: F10, FD10 & F10S

HS-3A Hand-Held Model

75 lbs. Cutting Pressure
0.08" dia. cutting capacity.

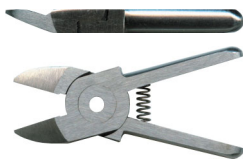
4-5/8" O.A. Length
Weight 4.2 oz.
15/16" body dia.



Model HS-3A **\$84.55**
Uses blades: F10, FD10 & F10S

15° ROUND BACK BLADES

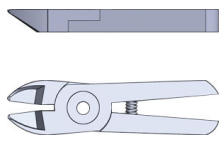
Blade opening: 3/32" at tip
3/64" at base
Blade length: 1/2"
Blade angle: 15°



Part No. **F10**\$33.80

40° ROUND BACK BLADES

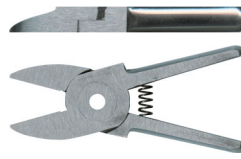
Blade opening: 3/32" at tip
3/64" at base
Blade length: 3/8"
Blade angle: 40°



Part No. **FD10**\$43.65

FLAT BACK BLADES

Blade opening: 3/32" at tip
3/64" at base
Blade length: 1/2"
Blade angle: 0°



Part No. **F10S**\$33.80

ALL BLADES

They can be removed for sharpening and can be reversed for left hand operation.

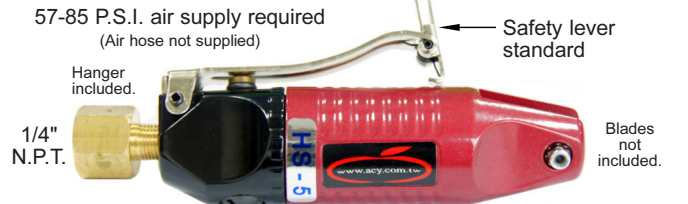
SPECIAL NOTICE

You must install an air line filter, oiler and regulator between your air supply and our power units. Failure to do this will void your factory warranty.

HS-5 Hand-Held Model

88 lbs. Cutting Pressure
0.08" dia. cutting capacity.

3-3/8" O.A. Length
Weight 4.6 oz.
1-3/16" body dia.



Model HS-5 **\$71.05**
Uses blades: F1, FD1, F1S, OS-5R & OR-5R

HS-5M Foot Switch/EOAT Model

88 lbs. Cutting Pressure
0.08" dia. cutting capacity.

3-3/4" O.A. Length
Weight 3.1 oz.
1-3/16" body dia.

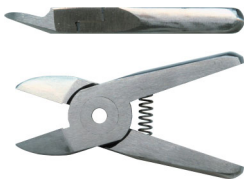
57-85 P.S.I. air supply required
(Air hose & Foot Switch not supplied)



Model HS-5M **\$84.55**
Uses blades: F1, FD1, F1S, OS-5R & OR-5R

15° ROUND BACK BLADES

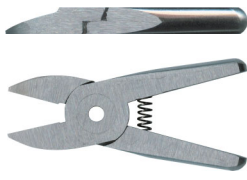
Blade opening: 1/8" at tip
1/16" at base
Blade length: 1/2"
Blade angle: 15°



Part No. **F1**\$33.80

FLAT BACK BLADES

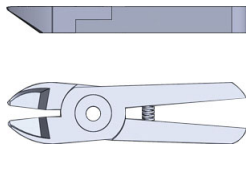
Blade opening: 1/8" at tip
1/16" at base
Blade length: 1/2"
Blade angle: 0°



Part No. **F1S**\$33.80

40° ROUND BACK BLADES

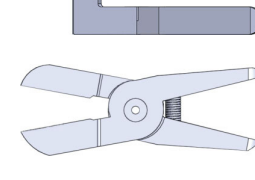
Blade opening: 1/8" at tip
1/16" at base
Blade length: 5/16"
Blade angle: 40°



Part No. **FD1**\$43.65

OFFSET FLAT BACK BLADES

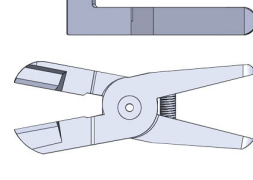
Blade opening: 1/8" at tip
1/16" at base
Blade length: 5/8"
Blade angle: 0°



Part No. **OS-5R**\$140.10

REVERSE OFFSET BLADES

Blade opening: 1/8" at tip
1/16" at base
Blade length: 5/8"
Blade angle: 0°



Part No. **OR-5R**\$140.10

SPECIAL NOTICE: You must install an air line filter, oiler and regulator between your air supply and our power units. Failure to do this will void your factory warranty.



PLASTIC PROCESS EQUIPMENT, INC.

www.ppe.com • e-mail: sales@ppe.com

6385 Montessouri Street, Las Vegas, Nevada 89113
PPE WEST 702-433-6385 • 800-258-8877 • Fax: 702-433-6388

11218 Challenger Avenue, Odessa, Florida 33556
PPE SOUTH 727-834-8888 • 800-282-6783 • Fax: 727-834-8873

8303 CORPORATE PARK DRIVE, MACEDONIA (Cleveland), OHIO 44056, USA

Toll Free: USA, Canada & Mexico
800-362-0706

216-367-7000 • Toll Free: 800-321-0562 • Fax: 216-367-7022 • Order Fax: 800-223-8305