

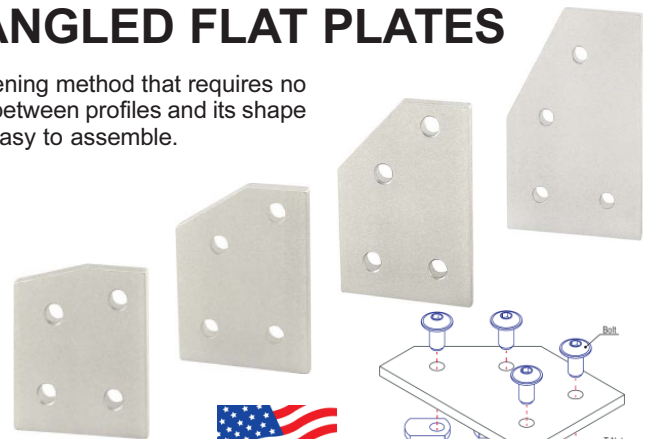
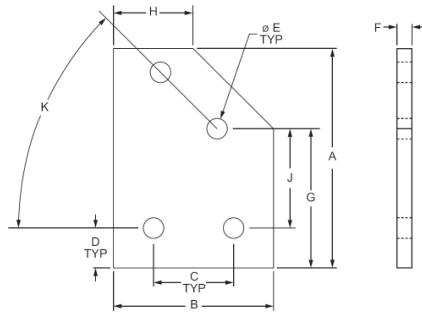


# EXTERNAL CONNECTORS

80/20®

## 4 HOLE - 15°, 30°, 45° & 60° ANGLED FLAT PLATES

The 4 hole - 15°, 30°, 45° & 60° Angled Flat Plates are an external fastening method that requires no machining services. These flat plate create a 15°, 30°, 45° or 60° angle between profiles and its shape reinforces the strength of the connection. It is a durable option that is easy to assemble.

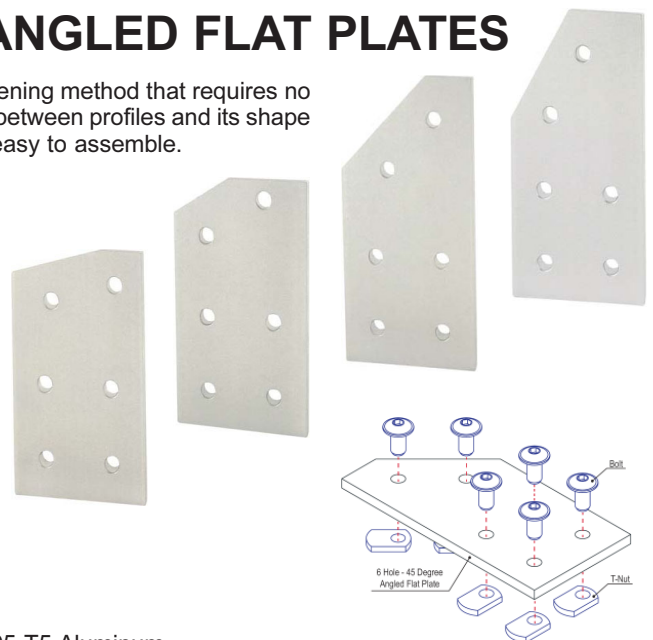
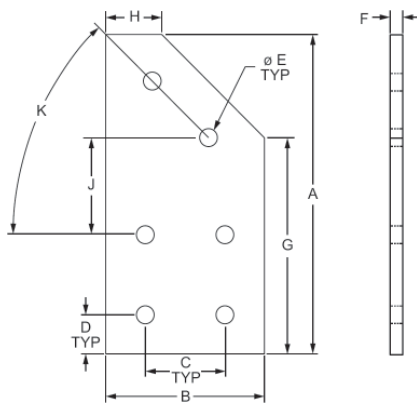


Material: Clear Anodized 6105-T5 Aluminum

Part No.	Series	A	B	C	D	E	F	G	H	J	K	Wt.	Price
EX4110	10	2.250"	2.000"	1.000"	.500"	.257"	.188"	1.966"	.940"	1.092"	15°	.075 lb	\$8.65
EX4143	10	2.500"	2.000"	1.000"	.500"	.257"	.188"	1.866"	.902"	1.183"	30°	.080 lb	\$8.65
EX4145	10	2.750"	2.000"	1.000"	.500"	.257"	.188"	1.744"	.994"	1.244"	45°	.086 lb	\$9.00
EX4164	10	3.000"	2.000"	1.000"	.500"	.257"	.188"	1.500"	1.134"	1.221"	60°	.092 lb	\$9.00
EX4331	15	3.500"	3.000"	1.500"	.750"	.328"	.250"	2.949"	.944"	1.617"	15°	.104 lb	\$10.55
EX4316	15	3.500"	3.000"	1.500"	.750"	.328"	.250"	2.799"	1.786"	1.650"	30°	.234 lb	\$10.55
EX4346	15	4.500"	3.000"	1.500"	.750"	.328"	.250"	2.561"	1.061"	1.811"	45°	.270 lb	\$11.10
EX4361	15	4.500"	3.000"	1.500"	.750"	.328"	.250"	2.250"	1.701"	1.558"	60°	.280 lb	\$11.10

## 6 HOLE - 15°, 30°, 45° & 60° ANGLED FLAT PLATES

The 6 Hole - 15°, 30°, 45° & 60° Angled Flat Plates are an external fastening method that requires no machining services. These flat plate create a 15°, 30°, 45° or 60° angle between profiles and its shape reinforces the strength of the connection. It is a durable option that is easy to assemble.



Material: Clear Anodized 6105-T5 Aluminum

Part No.	Series	A	B	C	D	E	F	G	H	J	K	Wt.	Price
EX4315	15	5.000"	3.000"	1.500"	.750"	.328"	.250"	4.307"	2.056"	1.669"	15°	.336 lb	\$12.50
EX4330	15	5.000"	3.000"	1.500"	.750"	.328"	.250"	4.299"	1.786"	1.616"	30°	.338 lb	\$12.50
EX4345	15	6.000"	3.000"	1.500"	.750"	.328"	.250"	4.061"	1.061"	1.811"	45°	.368 lb	\$12.50
EX4362	15	6.000"	3.000"	1.500"	.750"	.328"	.250"	3.750"	1.701"	1.558"	60°	.384 lb	\$12.50



### PLASTIC PROCESS EQUIPMENT, INC.

8303 CORPORATE PARK DRIVE  
 MACEDONIA, OHIO 44056-2300  
 216-367-7000 • FAX: 216-367-7022  
 TOLL FREE: 800-321-0562

6385 MONTESSOURI STREET  
 LAS VEGAS, NEVADA 89113-1186  
 702-433-6385 • FAX: 702-433-6388  
 TOLL FREE: 800-258-8877

www.ppe.com

e-mail: sales@ppe.com

Toll Free: USA, Canada & Mexico

**800-362-0706**

Order Fax: 800-223-8305