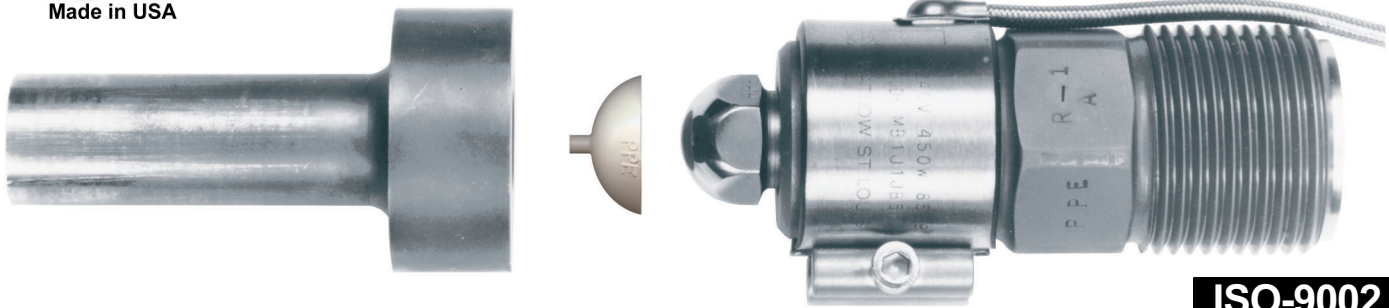




# NOZZLE INSULATOR CAPS

## FOR USE BETWEEN NOZZLES AND SPRUE BUSHINGS

### REDUCES HEAT TRANSFER



**ISO-9002**  
 MANUFACTURED IN A  
 QUALITY SYSTEM CERTIFIED  
 FACILITY.

**SIMPLE BUT EFFECTIVE**  
 DEVELOPED BY A PLASTICS  
 MOLDER FOR USE BY  
 PLASTIC MOLDERS!

- MADE OF SUPER HI-TEMP VECTRA® LCP PLASTICS WITH A MINERAL & GLASS ADDITIVE.
- TENSILE STRENGTH 2400 P.S.I.
- SOFTENS @ 520°F MELTS @ 635°F
- .025 WALL THICKNESS
- AVAILABLE IN 1/2 or 3/4 RADIUS

### NOZZLE INSULATORS:

- Reduce heat transfer between nozzle and sprue bushing from 30° to 40°F.
- Permit lower nozzle operating temperatures to avoid overheating.
- Lower nozzle temperatures to reduce melt discoloration.
- Lower nozzle temperatures to stop drooling.
- Lower nozzle temperatures to improve molded part quality.
- Reduce the need to turn up nozzle heats to compensate for draw from cool sprue bushing.
- Shorten cycles due to faster sprue set-up.
- Improve seal between nozzle and sprue bushing.

— INSTALLS EASILY —

1. Place insulator cap on clean sprue bushing radius. Locator tab helps center cap. A small spot of grease on the outside diameter of cap radius will help hold it in place.
2. Bring the nozzle in place against the sprue bushing and begin molding. Your first shot will have the tab and orifice material embedded in the runner.

For runnerless systems or hot sprue bushings we suggest you drill out the insulator cap center to match your orifice size. This eliminates blocking your melt passages with the high temperature insulator cap material.

— PRICES —

NOZZLE INSULATOR CAPS	
<b>1/2" RADIUS, PART NO. NIC-12</b>	
10-49 Pcs .....	\$ .68 ea.
50+ .....	\$ .61 ea.
<b>3/4" RADIUS, PART NO. NIC-34</b>	
10-49 Pcs .....	\$ .84 ea.
50+ .....	\$ .75 ea.



## PLASTIC PROCESS EQUIPMENT, INC.

6385 Montessouri Street, Las Vegas, Nevada 89113  
 PPE WEST 702-433-6385 • 800-258-8877 • Fax: 702-433-6388

11218 Challenger Avenue, Odessa, Florida 33556  
 PPE SOUTH 727-834-8888 • 800-282-6783 • Fax: 727-834-8873

8303 CORPORATE PARK DRIVE, MACEDONIA (Cleveland), OHIO 44056, USA

216-367-7000 • Toll Free: 800-321-0562 • Fax: 216-367-7022 • Order Fax: 800-223-8305

www.ppe.com • e-mail: sales@ppe.com

Toll Free: USA, Canada & Mexico  
**800-362-0706**