



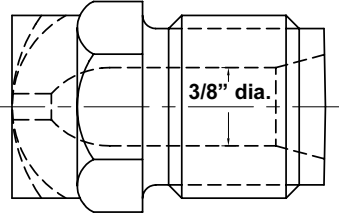
# RT NOZZLE TIPS

## H-13 TOOL STEEL - 1/2" & 3/4" RADIUS

**ISO-9002**  
 MANUFACTURED IN A  
 QUALITY SYSTEM CERTIFIED  
 FACILITY.

PPE Tool Steel Tips are made of High Quality Wear Resistant H-13 Tool Steel. The 7/8"-14 thread and 1/2" dia. rear opening are the industry standards and fit all competing RT adaptor bodies. The hardness is 46-48 RC. Beware of cheaper pre-heat treated 4140 RT Nozzle Tips. Also check the way the bore is drilled and polished!

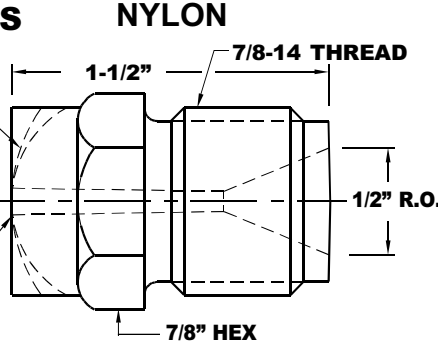
### ◆ GENERAL PURPOSE



For use on General Purpose Materials such as Polyethylene, Styrenes, etc.

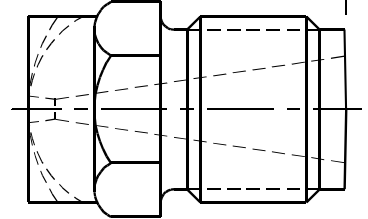
### SPECIFY RADIUS 1/2" or 3/4" 10 or 15mm or Flat

SPECIFY ORIFICE



7/8" HEX  
 Reduces drool when molding nylon.

### FULL INTERNAL TAPER



For use with ABS, PVC, Acrylics, Sulfones, Polycarbonate and other engineered materials.

### 1-1/2" LENGTH O.A. GENERAL PURPOSE

SIZES		PART NO.	PRICE
RADIUS	ORIFICE		
1/2" Rad.	1/16"	RTG1116	\$15.75
	3/32"	RTG1332	
	1/8"	◆ RTG118	
	5/32"	◆ RTG1532	
	3/16"	◆ RTG1316	
	7/32"	RTG1732	
	1/4"	◆ RTG114	
	9/32"	RTG1932	
	5/16"	RTG1516	
	11/32"	RTG11132	
	3/8"	RTG138	
	1/2"	RTG112	
3/4" Rad.	1/16"	RTG3116	\$15.75
	3/32"	RTG3332	
	1/8"	◆ RTG318	
	5/32"	◆ RTG3532	
	3/16"	◆ RTG3316	
	7/32"	RTG3732	
	1/4"	◆ RTG314	
	9/32"	RTG3932	
	5/16"	RTG3516	
	11/32"	RTG31132	
	3/8"	RTG338	
	7/16"	RTG3716	
1/2"	RTG312		

### 1-1/2" NYLON

PART NO.	PRICE
RTN1116	\$15.75
RTN1332	
RTN118	
RTN1532	
RTN1316	
RTN1732	
RTN114	
RTN1932	
RTN1516	
RTN11132	
RTN138	
N/A	
RTN3116	\$15.75
RTN3332	
RTN318	
RTN3532	
RTN3316	
RTN3732	
RTN314	
RTN3932	
RTN3516	
RTN31132	
RTN338	
RTN3716	
N/A	

### 1-1/2" FULL TAPER

PART NO.	PRICE
N/A	\$15.75
RTFT1332	
RTFT118	
RTFT1532	
RTFT1316	
RTFT1732	
RTFT114	
RTFT1932	
RTFT1516	
RTFT11132	
RTFT138	
N/A	
N/A	\$15.75
RTFT3332	
RTFT318	
RTFT3532	
RTFT3316	
RTFT3732	
RTFT314	
RTFT3932	
RTFT3516	
RTFT31132	
RTFT338	
RTFT3716	
N/A	

TO ORDER FLAT FACE TIPS

SPECIFY FLAT PART NUMBER WHEN ORDERING:

EXAMPLE PART NUMBER:

RTGF18

RT  $\begin{matrix} G & F & 18 \\ | & | & | \\ \text{TYPE} & \text{RADIUS} & \text{ORIFICE} \end{matrix}$

G 1 = 1/2" 1/8"  
 N 3 = 3/4" 5/32"  
 FT F = Flat ect.

◆ CPM9V Super Tough Wear Resistant Tips available to order. Add "S" prefix to the part number.  
 Price ..... \$39.00 ea.



## PLASTIC PROCESS EQUIPMENT, INC.

6385 Montessouri Street, Las Vegas, Nevada 89113  
 PPE WEST 702-433-6385 • 800-258-8877 • Fax: 702-433-6388

11218 Challenger Avenue, Odessa, Florida 33556  
 PPE SOUTH 727-834-8888 • 800-282-6783 • Fax: 727-834-8873

8303 CORPORATE PARK DRIVE, MACEDONIA (Cleveland), OHIO 44056, USA

216-367-7000 • Toll Free: 800-321-0562 • Fax: 216-367-7022 • Order Fax: 800-223-8305

www.ppe.com • e-mail: sales@ppe.com

Toll Free: USA, Canada & Mexico  
**800-362-0706**