

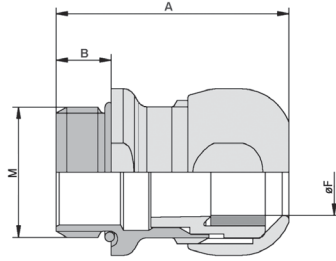


STRAIN RELIEF GLANDS

METRIC THREADS



STAINLESS STEEL BODY



- Heavy duty design provides great pullout strength and very reliable strain relief.
- Highly corrosion-resistant
- Smooth surface - No edges
- IP68/69K protection
- Withstands high pressure and high temperature wash downs (70 PSI)
- Temp Range: -40°C to +100°C

Strain Relief Glands - Metric Thread (M)

Part No.	M Thread Size	ØF Wire O.D.	A	B	Price
53806739	M12 x 1.5	0.157 - 0.275	1.154	0.256	\$31.65
53806740	M16 x 1.5	0.197 - 0.394	1.276	0.275	\$37.85
53806741	M20 x 1.5	0.275 - 0.512	1.398	0.315	\$41.70
53806742	M25 x 1.5	0.354 - 0.669	1.544	0.315	\$44.00
53806743	M32 x 1.5	0.433 - 0.827	1.757	0.354	\$57.15

Reducer Strain Relief Glands - Metric Thread (M)

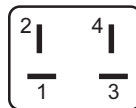
Part No.	M Thread Size	ØF Wire O.D.	A	B	Price
53806749	M12 x 1.5	0.118 - 0.197	1.154	0.256	\$36.20
53806750	M16 x 1.5	0.177 - 0.275	1.276	0.275	\$43.25
53806751	M20 x 1.5	0.236 - 0.394	1.398	0.315	\$47.65
53806752	M25 x 1.5	0.275 - 0.512	1.544	0.315	\$50.30
53806753	M32 x 1.5	0.315 - 0.591	1.757	0.354	\$65.25



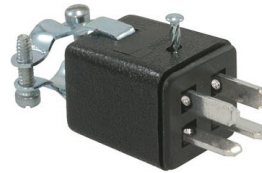
JONES PLUGS/SOCKETS

4 PIN CONNECTORS

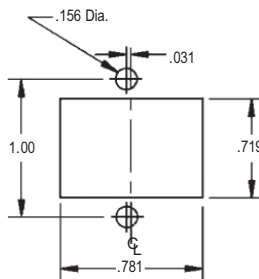
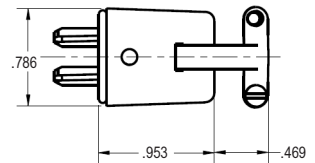
- Compatible with Cinch Series 300.
- 10 A Capacity
- Up to 250 VAC
- Use in Cable-to-Panel and Cable-to-Cable applications.
- Polarized to prevent incorrect insertion.
- Max Operating Temp: 215°F (102°C)
- Designed for medium & light duty applications.
- Cable clamps included.



4 Contact Polarizing Pattern



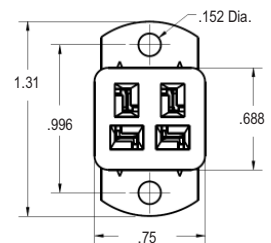
P-304-CCT



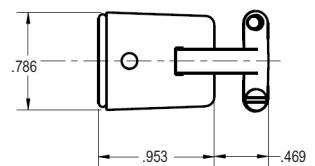
Panel Cut Out Dimensions



S-304-AB



S-304-CCT



PART NO.	DESCRIPTION	QUANTITY PRICES		
		1-9	10-99	100+
P-304-CCT	4 PIN PLUG WITH STRAIN RELIEF	\$4.45	\$3.85	\$3.25
S-304-AB	4 PIN SOCKET WITH ANGLE BRACKET	\$2.95	\$2.45	\$1.95
S-304-CCT	4 PIN SOCKET WITH STRAIN RELIEF	\$4.15	\$3.55	\$2.95



PLASTIC PROCESS EQUIPMENT, INC.

6385 Montessouri Street, Las Vegas, Nevada 89113
 PPE WEST 702-433-6385 • 800-258-8877 • Fax: 702-433-6388

11218 Challenger Avenue, Odessa, Florida 33556
 PPE SOUTH 727-834-8888 • 800-282-6783 • Fax: 727-834-8873

8303 CORPORATE PARK DRIVE, MACEDONIA (Cleveland), OHIO 44056, USA

216-367-7000 • Toll Free: 800-321-0562 • Fax: 216-367-7022 • Order Fax: 800-223-8305

www.ppe.com • e-mail: sales@ppe.com

Toll Free: USA, Canada & Mexico
800-362-0706