



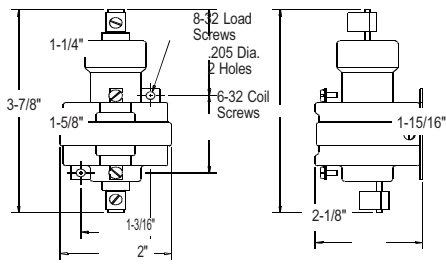
# GENERAL SPECIFICATIONS

**Frequency of Operation:** 60 Per Minute Max.  
**Pull-in Voltage:** On or before 75% of rated voltage  
**Operating Times:** 50 ms close, 80 ms release.  
**Mounting:** Vertical  $\pm 10^\circ$

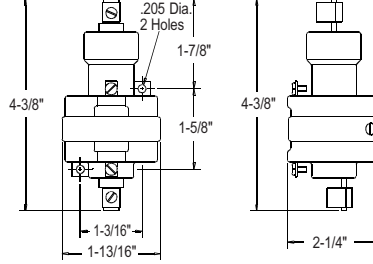
**Contact Resistance:** 30 & 35A=.003 ohm, 60A=.002 ohm, 100A=.001 ohm  
**Temperature Range:** -35° up to 85°C  
**Dielectric Withstand:** 2500 VAC RMS

**Coil Terminals:** #6 Binding Head Screws  
**Load Terminals:** 30A #8 Binding Head Screws, 35A Pressure Connectors for AWG 4-14, 60 & 100A Pressure Connectors for AWG 2-12

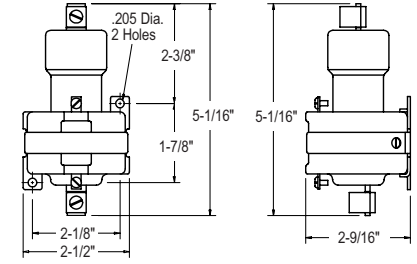
## One Pole - 30 Amp



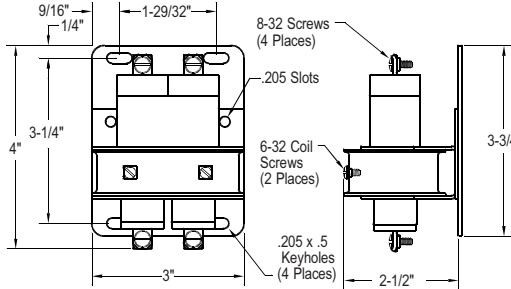
## One Pole - 35 & 60 Amp



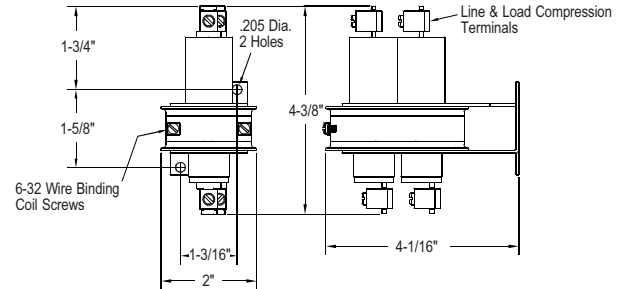
## One Pole - 100 Amp



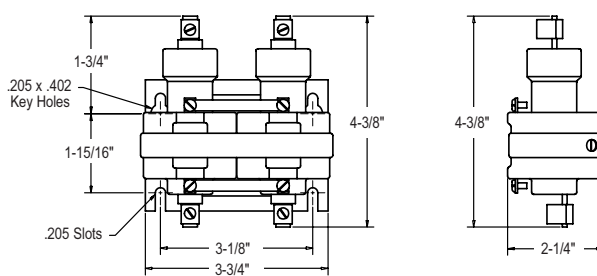
## Two Pole - 30 Amp



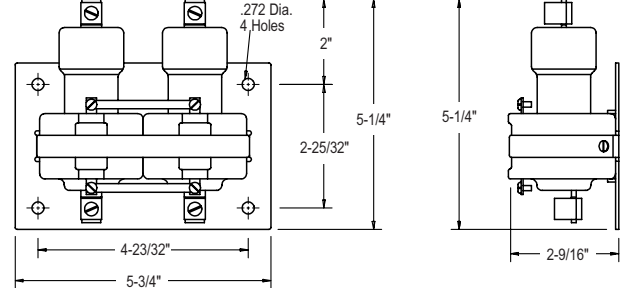
## Two Pole - 30 Amp Narrow



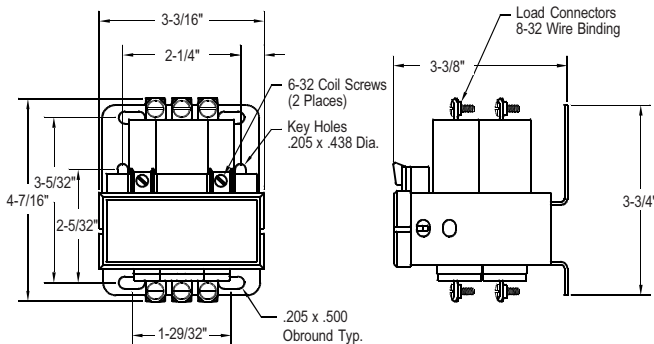
## Two Pole - 35 & 60 Amp



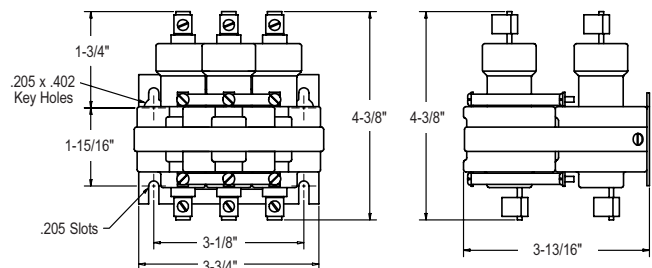
## Two Pole - 100 Amp



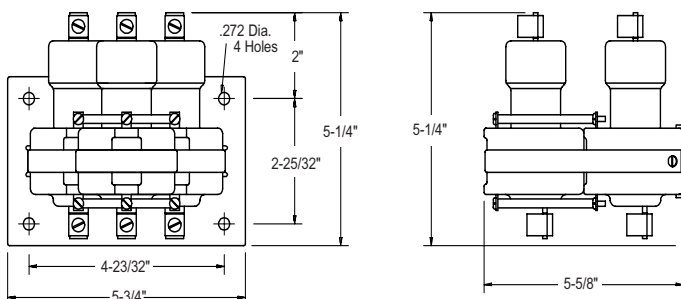
## Three Pole - 30 Amp



## Three Pole - 35 & 60 Amp



## Three Pole - 100 Amp



## Four Pole - 35 & 60 Amp

