



Han[®] INDUSTRIAL CONNECTORS

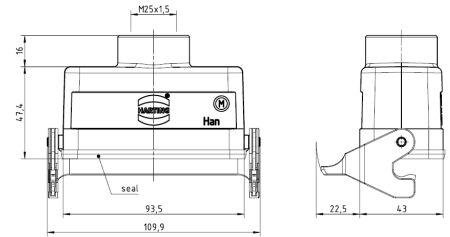


Han[®] 16 B Series Hoods, Cover & Inserts

Metal Hoods* - Cable to Cable- Low Construction

Part No.	Description	Thread (M)	Price
0930-0161750	Top Entry, 1 Lever	PG-21	\$39.75
1930-0161751	Top Entry, 1 Lever	M25	\$32.50
1930-0161752	Top Entry, 1 Lever	M32	\$40.75
0930-0161730	Top Entry, 2 Lever	PG-21	\$36.25
1930-0161731	Top Entry, 2 Lever	M25	\$24.65
1930-0161732	Top Entry, 2 Lever	M32	\$39.25

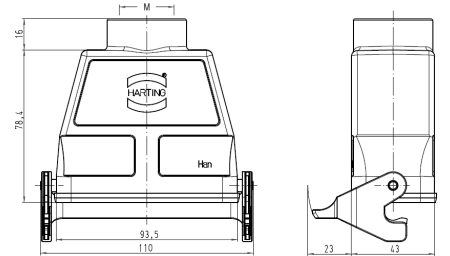
*Order Strain Relief Gland separately (listed beyond).



Metal Hoods* - Cable to Cable- High Construction

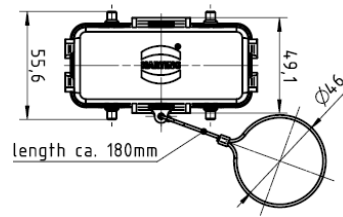
Part No.	Description	Thread (M)	Price
0930-0160750	Top Entry, 1 Lever	PG-21	\$51.25
0930-0160751	Top Entry, 1 Lever	PG-29	\$54.75
1930-0160757	Top Entry, 1 Lever	M32	\$51.25
0930-0160730	Top Entry, 2 Lever	PG-21	\$45.75
0930-0160731	Top Entry, 2 Lever	PG-29	\$48.20
1930-0160737	Top Entry, 2 Lever	M32	\$43.80

*Order Strain Relief Gland separately (listed beyond).



Metal Protective Cover for Cable to Cable Hoods

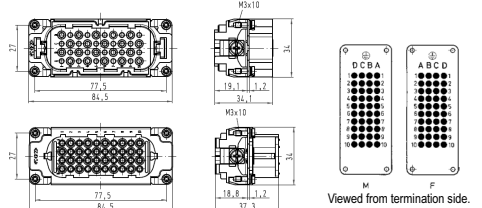
Part No.	Description	Price
0930-0165426	For Hoods w/ 2 Levers (with Lanyard)	\$32.20



Han[®] D Inserts (40 contacts + Ground) 250V 10A

Part No.	Description	Price
0921-0403001	Male Insert, Crimp Terminal*	\$16.75
0921-0403101	Female Insert, Crimp Terminal*	\$16.95

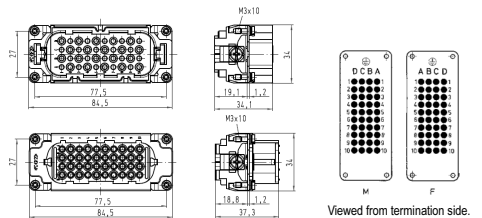
*Requires Han[®] D Crimp Contacts (listed beyond).



Han[®] DD Inserts (72 contacts + Ground) 250V 10A

Part No.	Description	Price
0916-0723001	Male Insert, Crimp Terminal*	\$23.75
0916-0723101	Female Insert, Crimp Terminal*	\$24.50

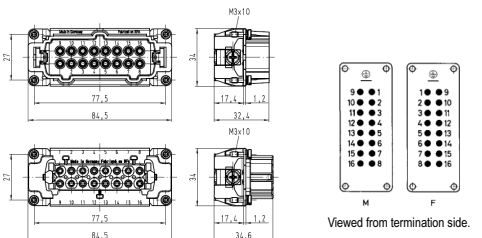
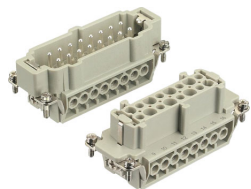
*Requires Han[®] D Crimp Contacts (listed beyond).



Han[®] E Inserts (16 contacts + Ground) 500V 16A

Part No.	Description	Price
0933-0162601	Male Insert, Screw Terminal	\$17.95
0933-0162602	Male Insert, Crimp Terminal**	\$15.75
0933-0162616	Male Insert, Cage Terminal	\$24.95
0933-0162701	Female Insert, Screw Terminal	\$18.95
0933-0162702	Female Insert, Crimp Terminal**	\$15.75
0933-0162716	Female Insert, Cage Terminal	\$26.25

**Requires Han[®] E Crimp Contacts (listed beyond).



PLASTIC PROCESS EQUIPMENT, INC.

www.ppe.com • e-mail: sales@ppe.com

6385 Montessouri Street, Las Vegas, Nevada 89113
702-433-6385 • 800-258-8877 • Fax: 702-433-6388

11218 Challenger Avenue, Odessa, Florida 33556
727-834-8888 • 800-282-6783 • Fax: 727-834-8873

8303 CORPORATE PARK DRIVE, MACEDONIA (Cleveland), OHIO 44056, USA

Toll Free: USA, Canada & Mexico
800-362-0706

216-367-7000 • Toll Free: 800-321-0562 • Fax: 216-367-7022 • Order Fax: 800-223-8305