



Han® INDUSTRIAL CONNECTORS

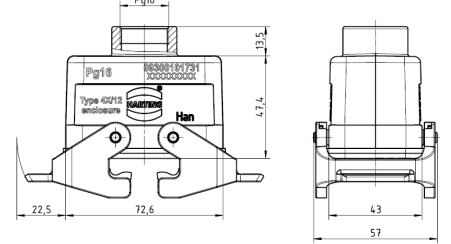
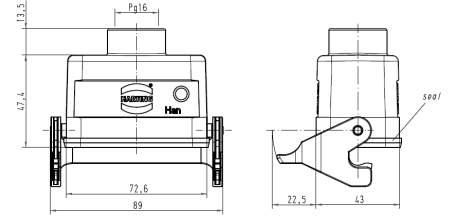


Han® 10 B Series Hoods, Cover & Inserts

Metal Hoods* - Cable to Cable - Low Construction

Part No.	Description	Thread (M)	Price
0930-0101751	Top Entry, 1 Lever	PG-16	\$32.25
1930-0101750	Top Entry, 1 Lever	M20	\$32.10
0930-0101731	Top Entry, 2 Lever	PG-16	\$31.75
1930-0101730	Top Entry, 2 Lever	M20	\$30.65

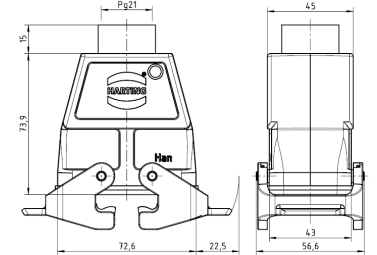
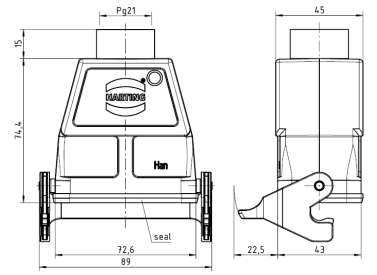
*Order Strain Relief Gland separately (listed beyond).



Metal Hoods* - Cable to Cable - High Construction

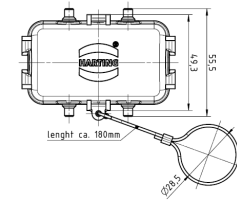
Part No.	Description	Thread (M)	Price
0930-0100752	Top Entry, 1 Lever	PG-21	\$82.65
0930-0100753	Top Entry, 1 Lever	PG-29	\$89.95
1930-0100756	Top Entry, 1 Lever	M25	\$70.25
0930-0100732	Top Entry, 2 Lever	PG-21	\$61.25
0930-0100733	Top Entry, 2 Lever	PG-29	\$65.75
1930-0100736	Top Entry, 2 Lever	M25	\$59.75
1930-0100737	Top Entry, 2 Lever	M32	\$62.75

*Order Strain Relief Gland separately (listed beyond).



Metal Protective Cover for Cable to Cable Hoods

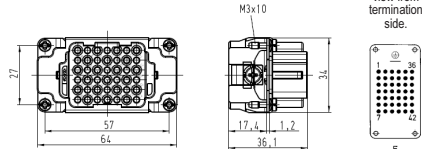
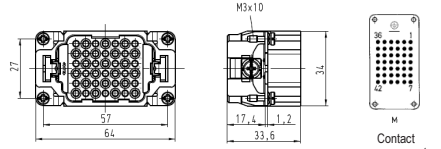
Part No.	Description	Price
0930-0105427	For 2 Lever Hoods (with Lanyard)	\$26.55



Han® DD Inserts (42 contacts + Ground) 250V 10A

Part No.	Description	Price
0916-0423001	Male Insert, Crimp Terminal**	\$22.25
0916-0423101	Female Insert, Crimp Terminal**	\$22.25

**Requires Han® D Crimp Contacts (listed beyond).



PLASTIC PROCESS EQUIPMENT, INC.

6385 Montessori Street, Las Vegas, Nevada 89113
702-433-6385 • 800-258-8877 • Fax: 702-433-6388

11218 Challenger Avenue, Odessa, Florida 33556
727-834-8888 • 800-282-6783 • Fax: 727-834-8873

8303 CORPORATE PARK DRIVE, MACEDONIA (Cleveland), OHIO 44056, USA

216-367-7000 • Toll Free: 800-321-0562 • Fax: 216-367-7022 • Order Fax: 800-223-8305

www.ppe.com • e-mail: sales@ppe.com

Toll Free: USA, Canada & Mexico
800-362-0706