



# Han<sup>®</sup> INDUSTRIAL CONNECTORS

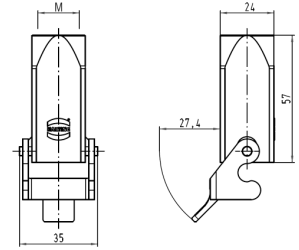


## Han<sup>®</sup> 3 A Series Hoods, Covers & Inserts

### Hoods\* - Cable to Cable

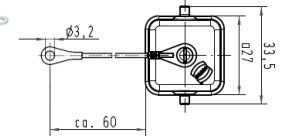
Part No.	Description	Thread (M)	Price
0920-0030720	Plastic Hood, Top Entry	PG-11	\$7.95
1920-0030720	Plastic Hood, Top Entry	M20	\$6.85
0920-0031750	Metal Hood, Top Entry	PG-11	\$13.95
1920-0031750	Metal Hood, Top Entry	M20	\$10.95

\*Order Strain Relief Gland separately (listed beyond).



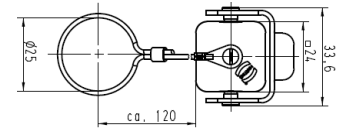
### Protection Covers for Housings (with Lanyard)

Part No.	Description	Price
0920-0035445	Plastic Cover for Housings with Female Insert	\$15.75
0920-0035425	Metal Cover for Housings with Female Insert	\$18.75
1944-0035425	Stainless Steel Cover for Housings with Female Insert	\$39.50
0920-0035446	Plastic Cover for Housings with Male Insert	\$14.50
0920-0035426	Metal Cover for Housings with Male Insert	\$17.50
1944-0035426	Stainless Steel Cover for Housings with Male Insert	\$37.50



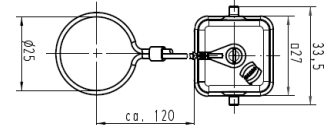
### Protection Covers for Hoods (with Lanyard)

Part No.	Description	Price
0920-0035441	Plastic Cover for Hoods with Female Insert	\$17.90
0920-0035421	Metal Cover for Hoods with Female Insert	\$24.95
1944-0035421	Stainless Steel Cover for Hoods with Female Insert	\$40.90
0920-0035442	Plastic Cover for Hoods with Male Insert	\$17.40
0920-0035422	Metal Cover for Hoods with Male Insert	\$21.75
1944-0035422	Stainless Steel Cover for Hoods with Male Insert	\$38.75



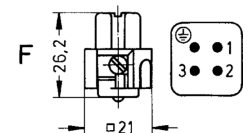
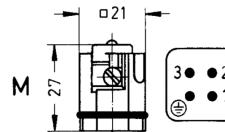
### Protection Covers for Cable to Cable Hoods (with Lanyard)

Part No.	Description	Price
0920-0035447	Plastic Cover for Cable to Cable Hoods w/Female Insert	\$15.95
0920-0035427	Metal Cover for Cable to Cable Hoods w/Female Insert	\$19.75
0920-0035448	Plastic Cover for Cable to Cable Hoods w/Male Insert	\$15.75
0920-0035428	Metal Cover for Cable to Cable Hoods w/Male Insert	\$19.25



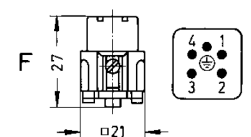
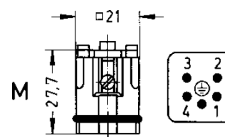
### Han<sup>®</sup> A Inserts (3 contacts + Ground) 400V 10A

Part No.	Description	Price
0920-0032611	Male, Screw Terminal	\$10.40
0920-0032634	Male, Quick Lock Terminal, 16-24 Ga.	\$9.25
0920-0032633	Male, Quick Lock Terminal, 14-22 Ga.	\$10.25
0920-0032711	Female, Screw Terminal	\$11.25
0920-0032734	Female, Quick Lock Terminal, 16-24 Ga.	\$9.75
0920-0032733	Female, Quick Lock Terminal, 14-22 Ga.	\$11.05



### Han<sup>®</sup> A Inserts (4 contacts + Ground) 400V 10A

Part No.	Description	Price
0920-0042611	Male, Screw Terminal	\$11.30
0920-0042634	Male, Quick Lock Terminal, 16-24 Ga.	\$12.15
0920-0042633	Male, Quick Lock Terminal, 14-20 Ga.	\$10.90
0920-0042711	Female, Screw Terminal	\$11.75
0920-0042734	Female, Quick Lock Terminal, 16-24 Ga.	\$12.65
0920-0042733	Female, Quick Lock Terminal, 14-20 Ga.	\$11.65



All contact arrangements viewed from termination side.



## PLASTIC PROCESS EQUIPMENT, INC.

6385 Montessori Street, Las Vegas, Nevada 89113  
702-433-6385 • 800-258-8877 • Fax: 702-433-6388

11218 Challenger Avenue, Odessa, Florida 33556  
727-834-8888 • 800-282-6783 • Fax: 727-834-8873

8303 CORPORATE PARK DRIVE, MACEDONIA (Cleveland), OHIO 44056, USA

216-367-7000 • Toll Free: 800-321-0562 • Fax: 216-367-7022 • Order Fax: 800-223-8305

www.ppe.com • e-mail: sales@ppe.com

Toll Free: USA, Canada & Mexico  
**800-362-0706**