



# EDGE PLUS TOUCHSCREEN HOT RUNNER TEMPERATURE CONTROL SYSTEM

## CONTROL ALGORITHM

The **EDGE Plus** Pinpoint Control Technology uses an advanced form of adaptive fuzzy logic with PID algorithm, allowing the **EDGE Plus** to control virtually any type and size of heater within +/- 0.1°F (0.05°C).

## ENHANCED DATA MONITORING

The **EDGE Plus** monitors various aspects of the heater as it is running. Max resistance and max wattage of the individual heaters are also recorded with the max current. Along with recorded max values, users can monitor running wattage, resistance and current of the heaters in real time in the Zone Details screen. Current is constantly monitored in real time to track errors including over-current conditions, shorted Triac and open Triac/Heater/Fuse.

## PLASTIC LEAKAGE DETECTION

The **EDGE Plus** early leak detection will alert the user to variances in the monitored heater, which indicate a plastic leakage upon startup. This gives users early warning for problems before they can lead to damage and loss of product.

## ADVANCED DATA ACQUISITION

The **EDGE Plus** features an intuitive user interface. Based on Windows and MSDE database systems, the **EDGE Plus** can store large amounts of data for analysis. Reports including system information, controller specifications and errors can be created.

## AUTO GROUPING

Thermocouple slaving requires controllers to be placed into groups. The **EDGE Plus** simplifies the process by automatically grouping controllers intelligently. When grouped, the controllers will display in various preset colors to aid in differentiation. If groups need to be modified, the user still has full control through the Zone Settings menu.

## ALARMS

Each zone has separate parameters allowing the system to react to alarm conditions on an individual basis. All parameters, including alarms, can be set individually or globally. A siren or an opening or closing of a relay is activated for critical alarms. When an error is detected, the color of the interface control is changed to alert the user for easy identification.

## MOLD DIAGNOSTICS

The **EDGE Plus** diagnostic and troubleshooting tool offers the ability to check for problems before production is started. When a new mold or a tool change occurs, the diagnostics can assist in detection of miswired power and thermocouples. Early detection of thermocouple problems such as open, reversed or shorted; problems with power such as open fuses, open or shorted heater/Triac; and indication of controller status will reduce downtimes and help prevent damage to tools.

## EMERGENCY START BUTTON

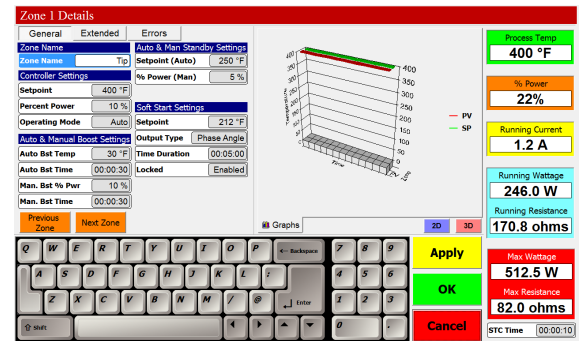
If the interface is inoperable, the system can be started by pressing the emergency start button. The controllers will run from settings they have saved from the last profile, as long as the proper shutdown procedure was followed beforehand.

## PORTABILITY

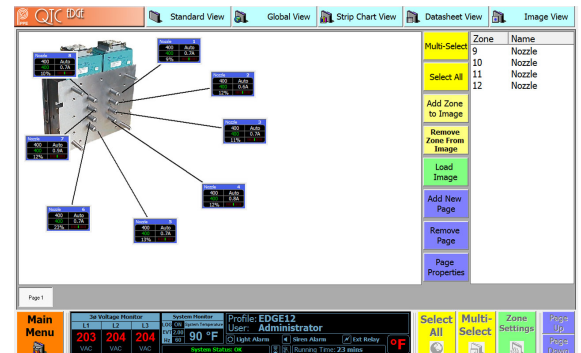
The 72 and 120 Zone Systems include casters for portability. An optional floorstand can be purchased for the 48 zone and smaller systems if desired. Cable hooks are included on systems with casters and the optional floorstand.



**Graph View:** View real-time graphs for up to 24 zones at a time.



**Zone Details:** Advanced parameter manipulation for zone controllers.



**Interactive Mold Photos:** Link interactive overlays to photos for easy identification.

# 2 YEAR WARRANTY



**PLASTIC PROCESS EQUIPMENT, INC.**

www.ppe.com • e-mail: sales@ppe.com

**PPE WEST** 6385 Montessouri Street, Las Vegas, Nevada 89113  
702-433-6385 • 800-258-8877 • Fax: 702-433-6388

**PPE SOUTH** 11218 Challenger Avenue, Odessa, Florida 33556  
727-834-8888 • 800-282-6783 • Fax: 727-834-8873

8303 CORPORATE PARK DRIVE, MACEDONIA (Cleveland), OHIO 44056, USA

Toll Free: USA, Canada & Mexico

216-367-7000 • Toll Free: 800-321-0562 • Fax: 216-367-7022 • Order Fax: 800-223-8305

**800-362-0706**