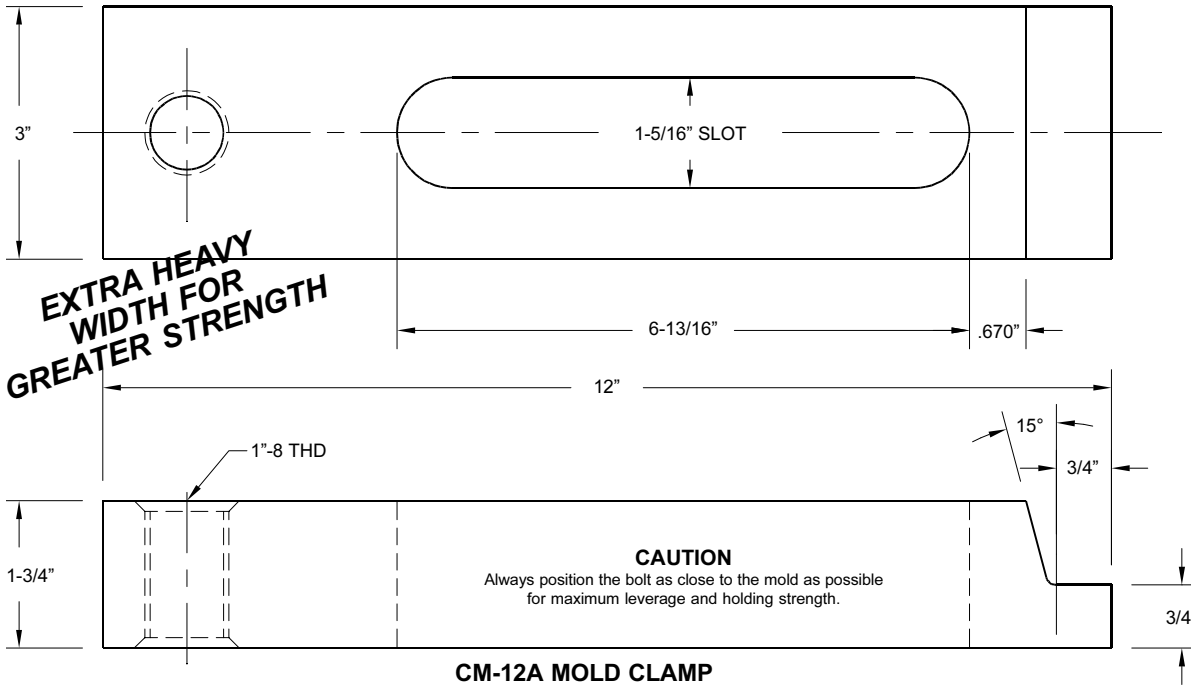




12" HEAVY DUTY MOLD CLAMPS

MACHINED FROM TOOL STEEL - HEAT TREATED FOR GREATER STRENGTH
 - ADJUSTABLE HEIGHT - 1-5/16" SLOT WIDTH

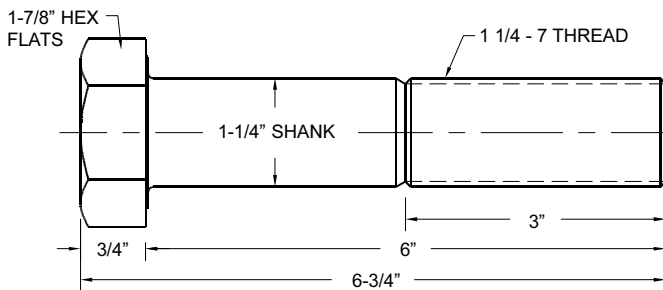


FOR
 1 1/4 - 7
 PLATEN
 HOLES

CLOSED TOE
 FOR
 MORE
 STRENGTH

CLAMP
 WEIGHT
 12 LBS. 8 OZ.

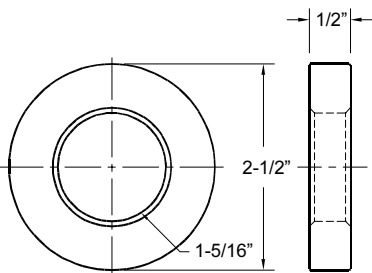
CM-12A MOLD CLAMP



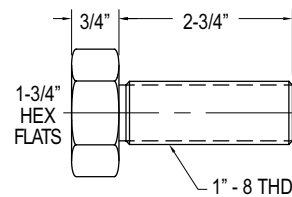
G8114760 GRADE 8 BOLT
 (OTHER BOLT LENGTHS AVAILABLE)

PART NO.	DESCRIPTION	QUANTITY PRICING		
		1-8	9-23	24+
CM-12A	12" MACHINED MOLD CLAMP	\$74.00	\$70.00	\$66.50
G8114760	1 1/4"-7 GRADE 8 BOLT	\$9.87	\$9.87	\$9.46
AB-2	1"-8 HEIGHT ADJUSTMENT BOLT	\$7.30	\$6.95	\$6.60
SAB1	1"-8 SWIVELHEIGHT ADJUSTMENT BOLT	\$9.75	\$9.25	\$8.80
MW-7A	MACHINED NO-TURN WASHER 1-5/16" I.D.	\$7.75	\$7.55	\$7.20
W-7A	WASHER 1-5/16" I.D.	\$5.35	\$5.15	\$4.95

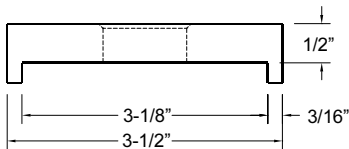
W-7A
 WASHER



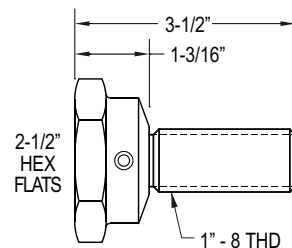
AB-2
 ADJUSTMENT
 BOLT



MW-7A
 NO-TURN
 WASHER



SAB1
 SWIVEL
 ADJUSTMENT
 BOLT



1-5/16" HOLE