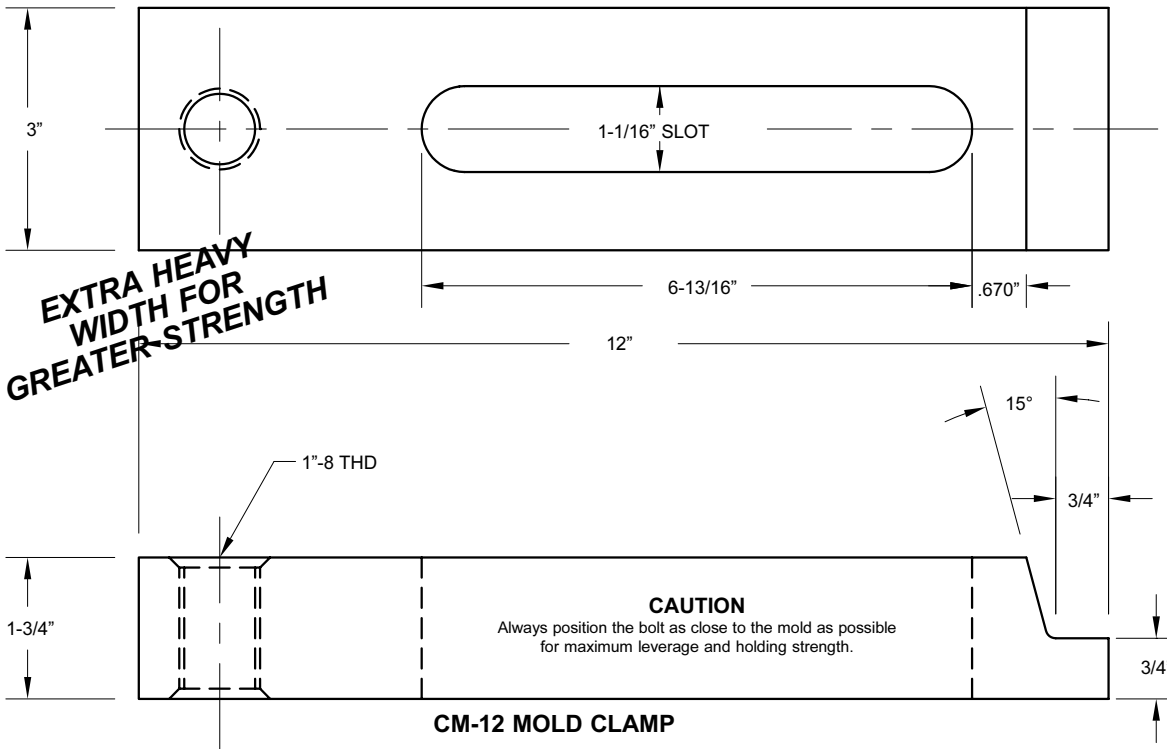




# 12" HEAVY DUTY MOLD CLAMPS

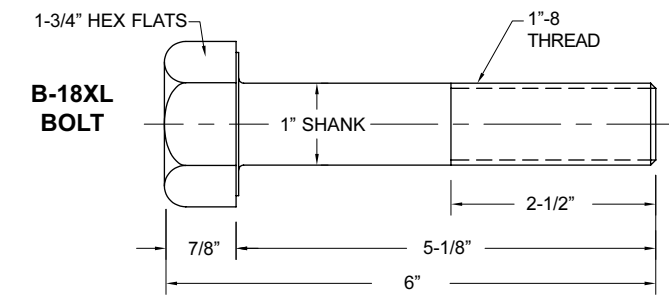
MACHINED FROM TOOL STEEL - HEAT TREATED FOR GREATER STRENGTH  
 - ADJUSTABLE HEIGHT - 1-1/16" SLOT WIDTH



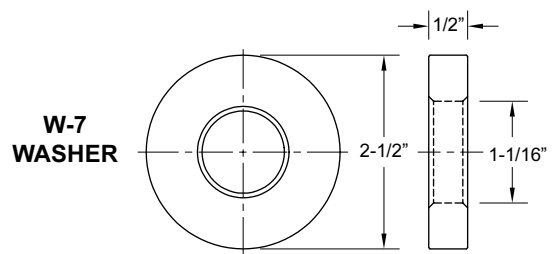
FOR  
 3/4"-10 & 1"-8  
 PLATEN  
 HOLES

CLOSED TOE  
 FOR  
 MORE  
 STRENGTH

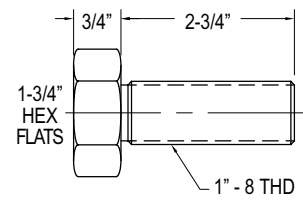
CLAMP  
 WEIGHT  
 13 LBS. 3 OZ.



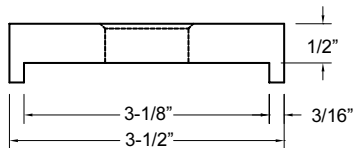
| PART NO. | DESCRIPTION                          | QUANTITY PRICING |         |         |
|----------|--------------------------------------|------------------|---------|---------|
|          |                                      | 1-8              | 9-23    | 24+     |
| CM-12    | 12" MACHINED MOLD CLAMP              | \$64.00          | \$60.00 | \$57.50 |
| B-18XL   | 1"-8 HEAVY DUTY BOLT                 | 14.10            | 13.75   | 13.30   |
| AB-2     | 1"-8 HEIGHT ADJUSTMENT BOLT          | 7.30             | 6.95    | 6.60    |
| SAB1     | 1"-8 SWIVEL HEIGHT ADJUSTMENT BOLT   | 9.75             | 9.25    | 8.80    |
| MW-7     | MACHINED NO-TURN WASHER 1-1/16" I.D. | 7.75             | 7.55    | 7.20    |
| W-7      | WASHER 1-1/16" I.D.                  | 5.10             | 4.90    | 4.70    |



**AB-2  
 ADJUSTMENT  
 BOLT**



**MW-7  
 NO-TURN  
 WASHER**



**SAB1  
 SWIVEL  
 ADJUSTMENT  
 BOLT**

