

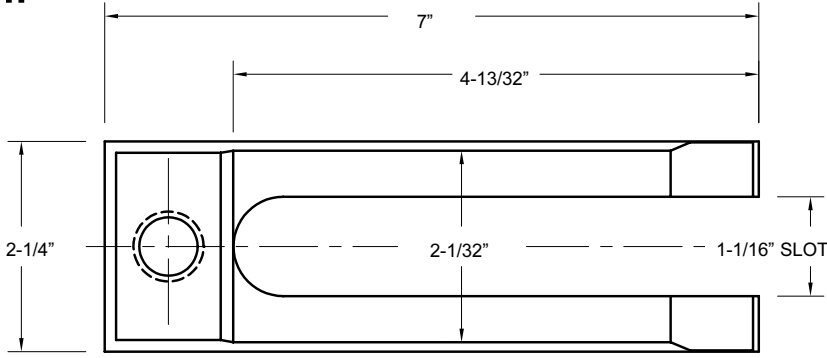


7" HEAVY DUTY FORGED

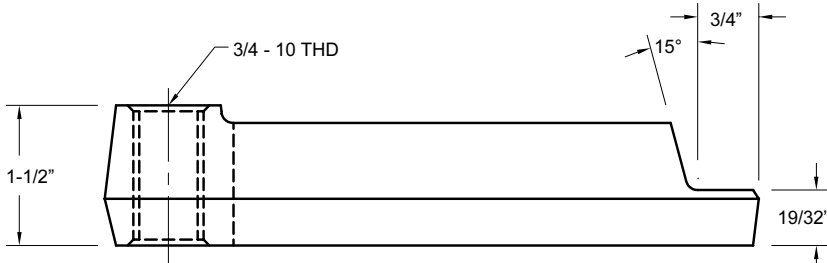
FOR 1" - 8 THD. PLATEN HOLES
OPEN-TOE

MOLD
CLAMPS

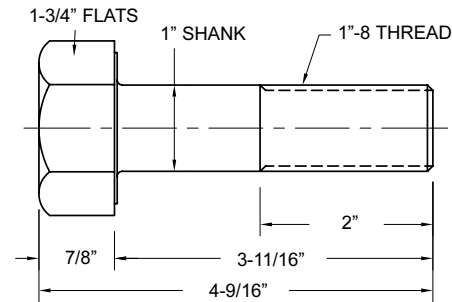
**IN
STOCK!**



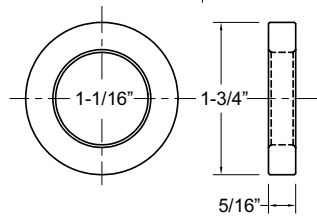
PART NO.	DESCRIPTION	QUANTITY PRICING			
		1-8	9-23	24-99	100+
FCMOT-7A	7" MOLD CLAMP	\$21.90	\$20.90	\$19.95	
B-18	1"-8 HD BOLT	12.00	11.65	11.35	
AB-1	3/4-10 HEIGHT ADJUSTMENT BOLT	4.30	4.10	3.90	
SAB3/4	3/4-10 SWIVEL HEIGHT ADJUSTMENT BOLT	9.90	9.40	8.90	
FW-5	FORGED NO-TURN WASHER 1-1/16" I.D.	3.05	2.95	2.80	2.70
W-134	WASHER 1-1/16" I.D.	1.66	1.61	1.56	1.52



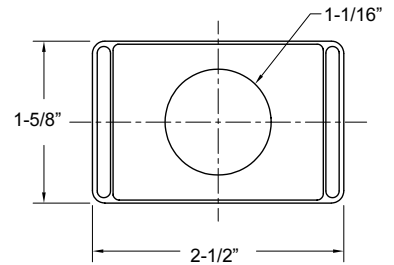
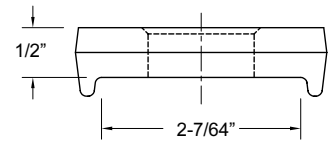
FCMOT-7A MOLD CLAMP



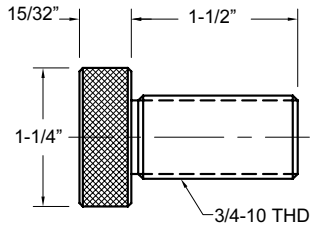
B-18 BOLT



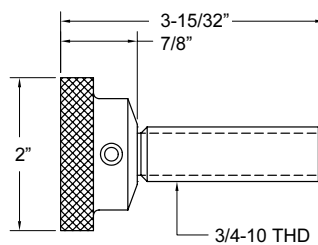
W-134 WASHER



**FW-5
NO-TURN
FORGED WASHER**

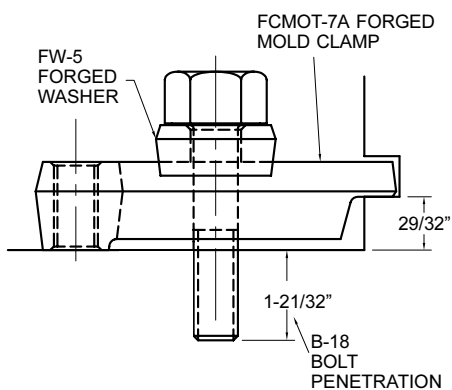


**AB-1 HEIGHT
ADJUSTMENT BOLT**

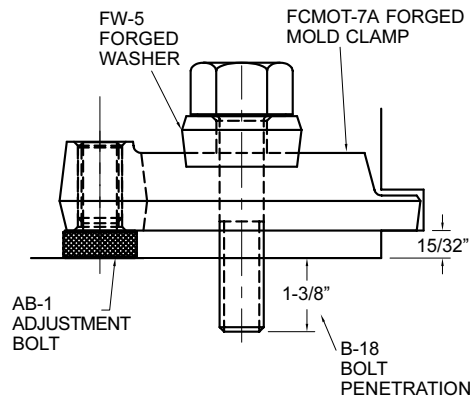


**SAB3/4
SWIVEL HEIGHT
ADJUSTMENT BOLT**

FOR 29/32" MOLD FLANGES



FOR 15/32" MOLD FLANGES



FOR 1-3/8" MOLD FLANGES

