

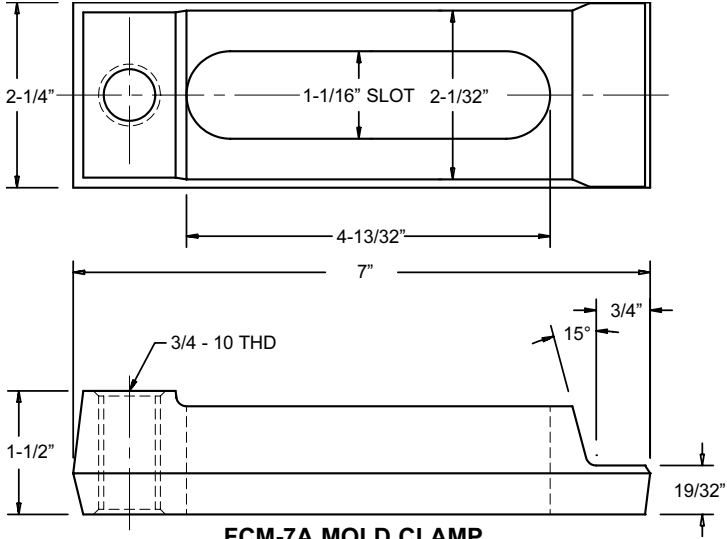


# 7" HEAVY DUTY FORGED

FOR 1"- 8 THD. PLATEN HOLES  
CLOSED-TOE

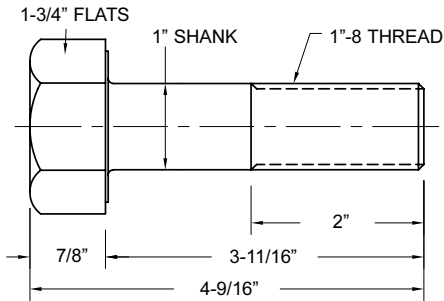
MOLD  
CLAMPS

**IN  
STOCK!**

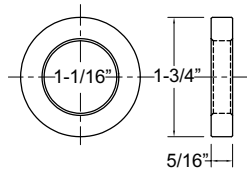


**FCM-7A MOLD CLAMP**

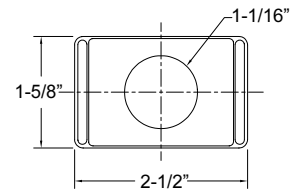
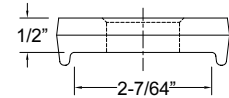
PART NO.	DESCRIPTION	QUANTITY PRICING			
		1-8	9-23	24-99	100+
FCM-7A	7" MOLD CLAMP	\$21.90	\$20.90	\$19.95	
B-18	1"-8 HEAVY DUTY BOLT	12.00	11.65	11.35	
AB-1	3/4-10 HEIGHT ADJUSTMENT BOLT	4.30	4.10	3.90	
SAB3/4	3/4-10 SWIVEL HEIGHT ADJUSTMENT BOLT	9.90	9.40	8.90	
FW-5	FORGED NO-TURN WASHER 1-1/16" I.D.	3.05	2.95	2.80	2.70
W-134	WASHER 1-1/16" I.D.	1.66	1.61	1.56	1.52



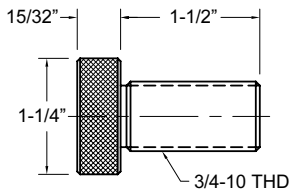
**B-18 BOLT**



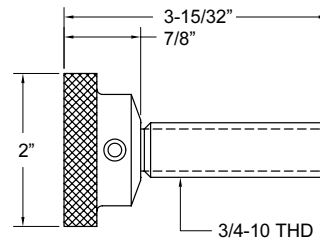
**W-134 WASHER**



**FW-5  
NO-TURN  
FORGED WASHER**

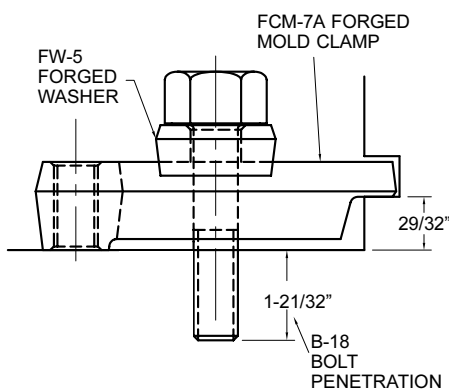


**AB-1 HEIGHT  
ADJUSTMENT BOLT**

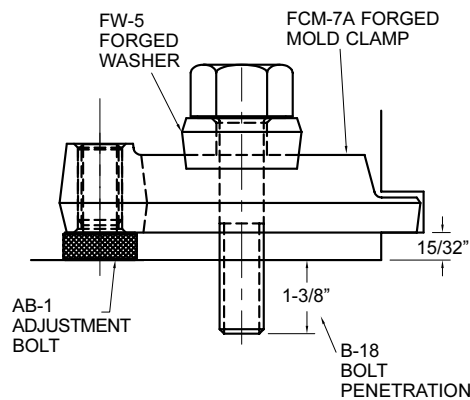


**SAB3/4  
SWIVEL HEIGHT  
ADJUSTMENT BOLT**

**FOR 29/32" MOLD FLANGES**



**FOR 15/32" MOLD FLANGES**



**FOR 1-3/8" MOLD FLANGES**

