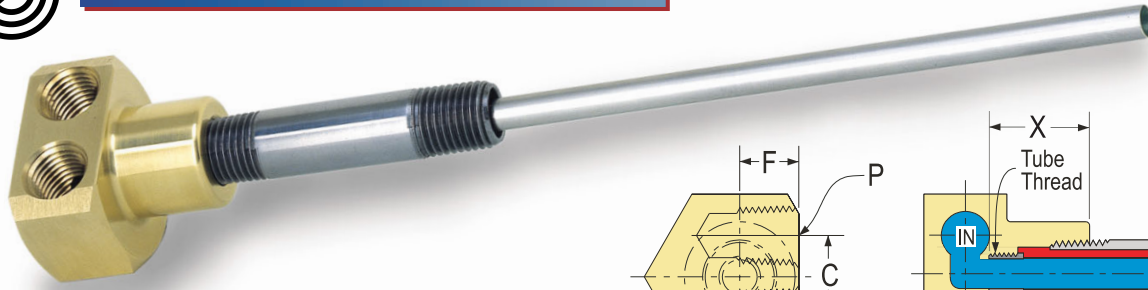




Compact Cascade Assemblies



Compact Cascades provide maximum cooling rates with improved design and High Flow Tubes.

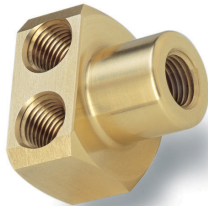
- In/Out connections are positioned sideways for mounting in tight spaces or thin mold plates.

- Assemblies include brass head, 12" High Flow Stainless tube, and 2" long galv. pipe nipple.

Part Number	Mold Nipple (NPT) M	In/Out Pipe (NPT) P	High Flow Tube O.D. (12" Long)	Tube Thread Size	Hex Size H	A	B	C	D	E	F	Tube End Ref. X	Price
ET1816	1/8	1/16	.187	1/4-28	15/16	7/32	7/16	1/2	1	5/8	.330	.60	\$17.30
ET1418	1/4	1/8	.250	5/16-24	1-1/4	5/16	5/8	11/16	1-1/4	3/4	.410	.82	17.55
ET1414	1/4	1/4	.250	5/16-24	1-1/2	3/8	3/4	3/4	1-1/2	7/8	.540	.90	18.60
ET3814	3/8	1/4	.312	3/8-24	1-1/2	3/8	3/4	3/4	1-1/2	1	.540	.92	20.15
ET1214	1/2	1/4	.375	7/16-20	1-3/4	3/8	3/4	1	1-3/4	1-3/16	.540	1.13	22.20

Compact Cascade Heads Only

- All dimensions same as above for corresponding catalog number.
- Order Adjustable Hex Nipples, or other pipe nipples listed beyond.
- Order High Flow Tubes below.



Part Number	Mold Nipple (NPT) M	In/Out Pipe (NPT) P	Tube Thread Size	Uses one of these tubes		Price
				Standard High Flow Tube No.	Alt. Tube No. for smaller dia. holes	
ET1816H	1/8	1/16	1/4-28	HF187T-	JHF125T-	\$11.25
ET1418H	1/4	1/8	5/16-24	HF250T-	JHF187T-	11.25
ET1414H	1/4	1/4	5/16-24	HF250T-	JHF250T-	12.30
ET3814H	3/8	1/4	3/8-24	HF312T-	JHF250T-	13.45
ET1214H	1/2	1/4	7/16-20	HF375T-	JHF312T-	16.95

High Flow Stainless Tubes



Special thin wall stainless tube for maximum flow and quicker cycles.

Increase Flow up to 300% !!

- All stainless construction for high strength and durability
- Cut to exact lengths at no charge.
- These tubes are also available with pipe threads. (See piston tubes)
- Available in 2 different tube O.D.s to accommodate different hole diameters.

STANDARD HIGH FLOW TUBES				Overall Length "L"							
Tube O.D.	Tube I.D.	Thread Size	Thread Length	12"		18"		24"		36"	
				Part No.	Price	Part No.	Price	Part No.	Price	Part No.	Price
.090	.076	5-44	1/8	HF093T-12	\$5.30	HF093T-18	\$6.00	HF093T-24	\$6.65	HF093T-36	\$7.40
.125	.109	10-32	3/16	HF125T-12	4.65	HF125T-18	5.35	HF125T-24	6.05	HF125T-36	6.75
.187	.167	1/4-28	1/4	HF187T-12	4.80	HF187T-18	5.55	HF187T-24	6.25	HF187T-36	6.95
.250	.230	5/16-24	5/16	HF250T-12	5.05	HF250T-18	5.80	HF250T-24	6.50	HF250T-36	7.20
.312	.288	3/8-24	3/8	HF312T-12	5.50	HF312T-18	6.20	HF312T-24	6.90	HF312T-36	7.60
.365	.340	7/16-20	7/16	HF375T-12	5.75	HF375T-18	6.50	HF375T-24	7.15	HF375T-36	7.90
.437	.407	1/2-20	1/2	HF437T-12	7.05	HF437T-18	7.80	HF437T-24	8.50	HF437T-36	9.15
ALTERNATIVE HIGH FLOW TUBES FOR SMALLER DIAMETER HOLES											
.072	.060	5-44	1/8	HF072T-12	5.55	HF072T-18	6.30	HF072T-24	7.00	HF072T-36	8.55
.072	.060	10-32	5/32	JHF072T-12	5.55	JHF072T-18	6.30	JHF072T-24	7.00	JHF072T-36	8.55
.090	.076	10-32	3/16	JHF093T-12	5.30	JHF093T-18	6.00	JHF093T-24	6.65	JHF093T-36	7.40
.125	.109	1/4-28	1/4	JHF125T-12	4.65	JHF125T-18	5.35	JHF125T-24	6.05	JHF125T-36	6.75
.187	.167	5/16-24	5/16	JHF187T-12	4.80	JHF187T-18	5.55	JHF187T-24	6.25	JHF187T-36	6.95
.250	.230	3/8-24	3/8	JHF250T-12	5.05	JHF250T-18	5.80	JHF250T-24	6.50	JHF250T-36	7.20
.312	.288	7/16-20	7/16	JHF312T-12	5.50	JHF312T-18	6.20	JHF312T-24	6.90	JHF312T-36	7.60
.365	.340	1/2-20	1/2	JHF375T-12	5.75	JHF375T-18	6.50	JHF375T-24	7.15	JHF375T-36	7.90