



FULL PORT PREMIUM BALL VALVES

PRECISION FORGED BRASS BODIES



ISO-9002

MANUFACTURED IN A
QUALITY SYSTEM CERTIFIED
FACILITY.

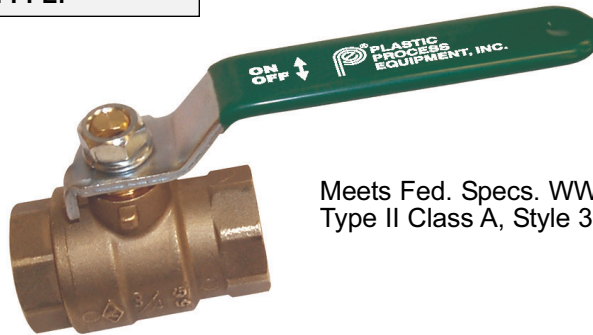
FEATURES:

- True Full Port Sizes
- Forged Brass Bodies
- PTFE seats and washers
- Chrome plated brass ball
- Brass stems
- PTFE stem seals
- Steel handle and nut
- Temp. Rating: -22°F to + 302°F.

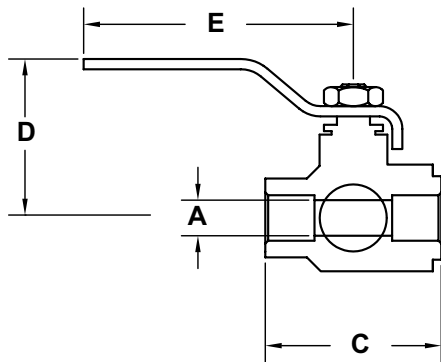
**FULL PORT VALVES
NO HOCUS POCUS
NO BAIT AND SWITCH
YOU GET WHAT YOU ORDER
FROM PPE!**

- 600 WOG 150 PSIG saturated steam
- U.L. listed 258 trim and drain valves
- ISO 9002 MFG.-Ameri Nat'l Standard
- Threaded ends to ANSI B1.20.1
- Epoxied ends to ANSI B16.18

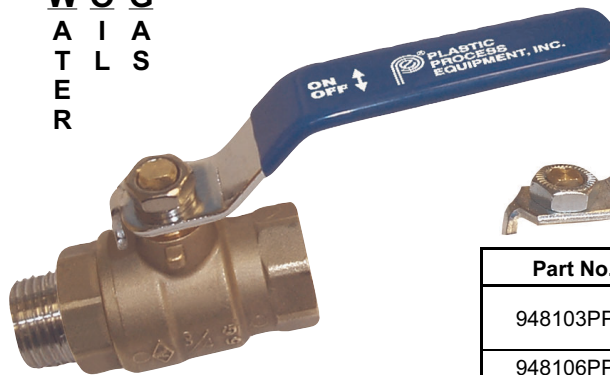
Our PPE FULL PORT BALL VALVES are forged for toughness and then precision machined to tight tolerances making the use of a packing nut unnecessary (female x female). This valve was originally designed for underground use where tightening a packing nut is impossible.



Meets Fed. Specs. WW-V-35
Type II Class A, Style 3



**W O G
A I A
T E R
S**



**REPLACEMENT
HANDLES
W/NUT AND GRIP**



For old style,
made in Italy.

Part No.	Fits Size	Price Each
948103PPH	1/4", 3/8", 1/2" & 3/4"	\$1.95
948106PPH	1" & 1-1/4"	3.80
948108PPH	1-1/2" & 2"	7.35

FEMALE X FEMALE

Part No.	Thread Size N.P.T.	QUANTITY PRICES		A Ball Orifice	C	D	E Rad. of Handle
		1-24	25+				
FP700014	1/4"	\$5.70	\$5.40	.39"	1.75"	1.27"	3.54"
FP700038	3/8"	6.15	5.85	.41"	1.75"	1.27"	3.54"
FP700012	1/2"	6.95	6.65	.58"	2.05"	1.92"	3.54"
FP700034	3/4"	10.35	9.85	.75"	2.36"	2.08"	3.78"
FP700010	1"	15.40	14.70	.94"	2.75"	2.56"	4.52"
FP7000114	1-1/4"	26.80	25.55	1.26"	3.30"	2.95"	4.52"
FP7000112	1-1/2"	40.85	38.95	1.57"	3.66"	3.34"	5.51"
FP70002	2"	68.20	65.00	1.97"	4.18"	3.68"	5.51"

SPARE HANDLE W/NUT - CURRENT STYLE		
Part No.	Fits Size	Price Each
940171PPH	1/4"	\$1.09
940172PPH	3/8"	1.09
940173PPH	1/2"	1.09
940174PPH	3/4"	1.41
940175PPH	1"	1.80
940176PPH	1-1/4"	1.91
940177PPH	1-1/2"	3.26
940178PPH	2"	3.54

MALE X FEMALE

FP700214	1/4"	\$6.35	6.05	.32"	2.02"	1.69"	2.76"
FP700238	3/8"	8.60	8.20	.39"	2.09"	1.73"	3.54"
FP700212	1/2"	7.20	6.90	.58"	2.34"	1.94"	3.54"
FP700234	3/4"	11.15	10.60	.75"	2.62"	2.11"	3.78"
FP700210	1"	17.15	16.35	.95"	3.00"	2.58"	4.53"
FP7002114	1-1/4"	29.25	27.90	1.26"	3.56"	2.95"	4.53"
FP7002112	1-1/2"	43.45	41.45	1.58"	3.97"	3.35"	5.51"
FP700220	2"	63.80	60.85	1.97"	4.50"	3.68"	5.51"

948170PPH	1/4"	\$1.09
948171PPH	3/8"	1.09
948172PPH	1/2"	1.09
948173PPH	3/4"	1.41
948174PPH	1"	1.80
948175PPH	1-1/4"	1.91
948176PPH	1-1/2"	3.26
948177PPH	2"	3.54



PLASTIC PROCESS EQUIPMENT, INC.

www.ppe.com • e-mail: sales@ppe.com

PPE WEST 6385 Montessouri Street, Las Vegas, Nevada 89113
702-433-6385 • 800-258-8877 • Fax: 702-433-6388

PPE SOUTH 11218 Challenger Avenue, Odessa, Florida 33556
727-834-8888 • 800-282-6783 • Fax: 727-834-8873

8303 CORPORATE PARK DRIVE, MACEDONIA (Cleveland), OHIO 44056, USA

216-367-7000 • Toll Free: 800-321-0562 • Fax: 216-367-7022 • Order Fax: 800-223-8305

Toll Free: USA, Canada & Mexico
800-362-0706