



Threadless Waterline O-Ring Plugs Compression Type

3
PLUG TYPES
AVAILABLE

For positively sealing waterlines without tapping or where space is limited.

- No tapping required.
- Pressures up to 72 psi.
buna O-Ring expands to seal hole when socket head screw is tightened.
- Will seal rough or corroded holes.



OVERSIZED
(SEE DRILL SIZE)

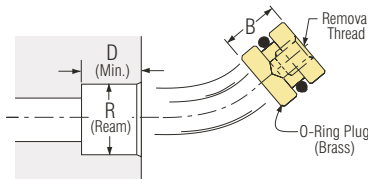
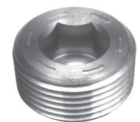
| Part Number | Nominal Size | Overall Length | Hex Size | Drill Size | Price Each |
|-------------|--------------|----------------|----------|------------|------------|
| BTP-10 | 1/8 | .50 | 5/64 | 11/32 | \$2.00 |
| BTP-20 | 1/4 | .56 | 1/8 | 7/16 | 2.10 |
| BTP-40 | 3/8 | .62 | 1/8 | 9/16 | 2.30 |
| BTP-60 | 1/2 | .62 | 1/8 | 11/16 | 2.40 |
| BTP-10-OS | 1/8 | .50 | 5/64 | 23/64 | 2.00 |
| BTP-20-OS | 1/4 | .56 | 1/8 | 29/64 | 2.10 |
| BTP-40-OS | 3/8 | .62 | 1/8 | 37/64 | 2.30 |
| BTP-60-OS | 1/2 | .62 | 1/8 | 45/64 | 2.40 |

O-Ring Plugs Non-Compression

- O-Ring Plugs are used when backed up by other mold inserts, holder block, etc.
- Requires less space than NPT pipe plugs. Less interference in tight spaces.
- For easy installation, use O-Ring Plug Counterbores.
- Standard Buna O-Ring provides seal to 210°F
Viton O-Rings and quad rings available.



Threaded brass plugs available. see pages beyond.

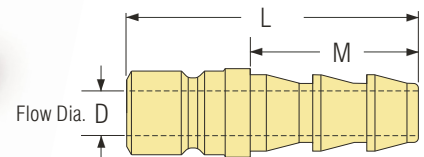


| Part Number | Nominal Size | Ream Size "R" | "B" (+.000) (-.005) | Min. Depth "D" (+.005) (-.000) | Removal Thread Size | Price Each |
|-------------|--------------|---------------|---------------------|--------------------------------|---------------------|------------|
| OR-06 | 1/16 | .281 | 1/4 | .250 | 6-32 | \$0.85 |
| OR-12 | 1/8 | .375 | 5/16 | .312 | 10-32 | \$0.80 |
| OR-25 | 1/4 | .500 | 5/16 | .312 | 10-32 | \$0.80 |
| OR-38 | 3/8 | .625 | 7/16 | .437 | 1/4-20 | \$1.00 |
| OR-50 | 1/2 | .750 | 1/2 | .500 | 1/4-20 | \$1.25 |
| OR-75 | 3/4 | 1.000 | 5/8 | .625 | 3/8-16 | \$1.60 |
| OR-100 | 1 | 1.187 | 5/8 | .625 | 3/8-16 | \$2.20 |

Plug to Hose Combination Fittings

ACCEPTS PUSH-LOK HOSES

Eliminates multiple fittings and assembly. Put a Combination Hose Insert on one end of a hose, and a Coupler on the other. Hoses may then be snapped together in series.



- All flow diameters maximized to reduce restrictions.
- For use with Push-Lok or standard hose.

| 200 Series (1/4" Hole) | | | | | | |
|------------------------|-----------|------|--------|--------|------------|--|
| Part No. | Hose I.D. | "D" | "M" | "L" | Price Each | |
| 200-4 | 1/4 | 3/16 | 7/8 | 1-3/8 | \$1.35 | |
| 200-5 | 5/16 | 1/4 | 7/8 | 1-3/8 | 1.40 | |
| 200-6 | 3/8 | 1/4 | 1-1/16 | 1-9/16 | 1.55 | |
| 200-8 | 1/2 | 1/4 | 1-1/16 | 1-9/16 | 1.65 | |

| 300 Series (3/8" Hole) | | | | | | |
|------------------------|-----------|-------|--------|--------|------------|--|
| Part No. | Hose I.D. | "D" | "M" | "L" | Price Each | |
| 300-4 | 1/4 | 3/16 | 7/8 | 1-13/1 | \$1.65 | |
| 300-5 | 5/16 | 1/4 | 7/8 | 1-13/1 | 1.65 | |
| 300-6 | 3/8 | 9/32 | 1-1/16 | 1-13/1 | 1.45 | |
| 300-8 | 1/2 | 11/32 | 1-1/16 | 1-13/1 | 1.45 | |

| 500 Series (1/2" Hole) | | | | | | |
|------------------------|-----------|-------|--------|-------|------------|--|
| Part No. | Hose I.D. | "D" | "M" | "L" | Price Each | |
| 500-8 | 1/2 | 13/32 | 1-1/16 | 2 | \$2.60 | |
| 500-12 | 3/4 | 9/16 | 1-1/2 | 2-1/2 | 3.45 | |



PLASTIC PROCESS EQUIPMENT, INC.

www.ppe.com • e-mail: sales@ppe.com

6385 Montessouri Street, Las Vegas, Nevada 89113
PPE WEST 702-433-6385 • 800-258-8877 • Fax: 702-433-6388

11218 Challenger Avenue, Odessa, Florida 33556
PPE SOUTH 727-834-8888 • 800-282-6783 • Fax: 727-834-8873

8303 CORPORATE PARK DRIVE, MACEDONIA (Cleveland), OHIO 44056, USA

Toll Free: USA, Canada & Mexico
800-362-0706

PPE 216-367-7000 • Toll Free: 800-321-0562 • Fax: 216-367-7022 • Order Fax: 800-223-8305