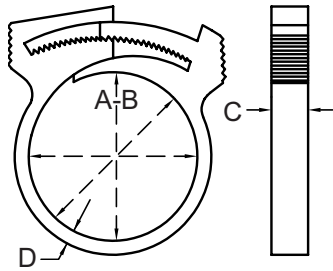


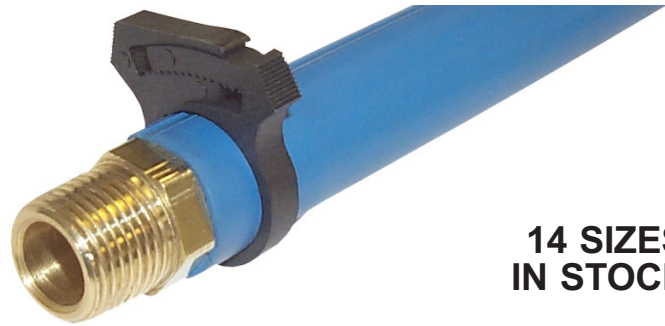


# PLASTIC HOSE CLAMPS

## LOW COST - DEPENDABLE - INSTALLS QUICKLY



"A" Clamp completely closed, excluding ridge. Average of the three angles.  
 "B" Same as "A" except with two teeth engaged.  
 Dimensions may vary + .025 (6mm)



**14 SIZES  
IN STOCK!**

**CAUTION WHEN ORDERING:** Hose O.D. increases when you insert plug. Measure accordingly.

Part No.	Hose O.D. Size	Unit of measure	Effective Clamp Range		C	D	ONE LOW PRICE
			Min. A Dia.	Max. B Dia.			
M30	1/2"	in. mm	.468 11.9	.547 13.9	.220 5.6	.070 1.8	<del>\$ .10</del>
M32	9/16"	in. mm	.531 13.5	.609 15.5	.220 5.6	.070 1.8	<del>\$ .10</del>
M38	5/8"	in. mm	.593 15.1	.656 16.7	.220 5.6	.070 1.8	<del>\$ .13</del>
M44	3/4"	in. mm	.658 16.7	.798 20.3	.220 5.6	.070 1.8	<del>\$ .13</del>
M50	13/16"	in. mm	.766 19.5	.875 22.2	.220 5.6	.070 1.8	<del>\$ .14</del>
M56	7/8"	in. mm	.875 22.2	1.016 25.8	.220 5.6	.070 1.8	<del>\$ .14</del>
M62	1"	in. mm	.953 24.2	1.109 28.2	.310 7.9	.070 1.8	<del>\$ .18</del>
M68	1 1/8"	in. mm	1.031 26.2	1.173 29.8	.310 7.9	.070 1.8	<del>\$ .18</del>
M80	1 1/4"	in. mm	1.173 29.8	1.421 36.1	.310 7.9	.070 1.8	<del>\$ .20</del>
M92	1 1/2"	in. mm	1.421 36.1	1.609 40.9	.360 9.1	.070 1.8	<del>\$ .20</del>
M104	1 3/4"	in. mm	1.593 40.5	1.812 46.0	.360 9.1	.070 1.8	<del>\$ .20</del>
M114	1 7/8"	in. mm	1.687 42.8	1.954 49.6	.360 9.1	.070 1.8	<del>\$ .24</del>
M124	2"	in. mm	1.875 47.6	2.125 54.0	.400 10.2	.070 1.8	<del>\$ .24</del>
M134	2 1/4"	in. mm	2.125 54.0	2.375 60.3	.400 10.2	.070 1.8	<del>\$ .26</del>

**CLOSE  
OUT  
PRICES**

**\$.08**  
**\$.08**  
**\$.09**  
**\$.09**  
**\$.09**  
**\$.09**  
**\$.12**  
**\$.12**  
**\$.12**  
**\$.13**  
**\$.13**  
**\$.15**  
**\$.15**  
**\$.15**

- Material - Glass Filled Extra Tough Nylon 6/6 Black.
- Color - Black
- Heat Stable Good to 470° F.
- Rated Working Pressure 225 PSI.
- Installs Easily With Pliers.
- Quick Ratchet Closure.
- Specific Take-up Eliminates Excessive Tightening.
- Lateral Effort Disengages Ratchet.
- Allows Application After Connection of Hose.
- Clamp Stays in Place During Installation.
- Will Not Rust or Corrode.
- Stable In a Wide Variety of Chemicals Including Salts, Alcohols, Detergents, High Temperature Fluids, Oils and Greases.

**Clamp Kit Available #MK251 .....\$75.00 ea. \$59.00**

Model MK251 Plastic Clamp Kit contains 251 Hose Clamps in 17 different sizes from 1/4" to 2 1/4" diameters in a rugged plastic case fully marked including instructions.

PROPERTY	ASTM METHOD	ENGLISH UNITS	VALUE
Specify Gravity	D-792		1.22
Tensile Strength	D-638	psi	
73°F Dry			15,000
50% RH			12,000
100% RH			7,500
Elongated at Break	D-638	%	
73°F Dry			2.1
50% RH			8.1
100% RH			11.4
Shear Strength, Dry	D-732	psi	11,000
Flexural Modulus	D-790	psi	
73°F Dry			700,000
50% RH			400,000
100% RH			250,000
Compression Strength, Dry	D-695	psi	25,000

Deformation Under Load (4,000 psi, 122°F)	D-621	%	1.1
Deflection Temperature 264 psi (4)	D-648	°F	470
Izod Impact Strength, Dry	D-256	ft.lb./in.	
1/4" bar, 73°F			0.9
1/8" bar, 73°F			0.7
Unnotched 1/8" bar, 73°F			5.0
Melting Point	D-789	°F	500
Coefficient of Linear Thermal Expansion	D-696	in./in./°F	1.5x10 <sup>-5</sup>
Water Absorption 73°F/24 Hours Saturation	D-570	%	
			1.0
			7.1
Rockwell Hardnes	D-785	M scale	
M, Dry			95
M, 50% RH			84
R, Dry			122
R, 50% RH			113



**PLASTIC PROCESS EQUIPMENT, INC.**

6385 Montessouri Street, Las Vegas, Nevada 89113  
 PPE WEST 702-433-6385 • 800-258-8877 • Fax: 702-433-6388

11218 Challenger Avenue, Odessa, Florida 33556  
 PPE SOUTH 727-834-8888 • 800-282-6783 • Fax: 727-834-8873

8303 CORPORATE PARK DRIVE, MACEDONIA (Cleveland), OHIO 44056, USA

216-367-7000 • Toll Free: 800-321-0562 • Fax: 216-367-7022 • Order Fax: 800-223-8305

www.ppe.com • e-mail: sales@ppe.com

Toll Free: USA, Canada & Mexico  
**800-362-0706**