



# Threadless Waterline O-Ring Plugs Compression Type

3  
PLUG TYPES  
AVAILABLE

For positively sealing waterlines without tapping or where space is limited.

- No tapping required.
- Pressures up to 72 psi.  
buna O-Ring expands to seal hole when socket head screw is tightened.
- Will seal rough or corroded holes.



Part Number	Nominal Size	Overall Length	Hex Size	Drill Size	Price Each
BTP-10	1/8	.50	5/64	11/32	\$2.00
BTP-20	1/4	.56	1/8	7/16	2.10
BTP-40	3/8	.62	1/8	9/16	2.30
BTP-60	1/2	.62	1/8	11/16	2.40
BTP-10-OS	1/8	.50	5/64	23/64	2.00
BTP-20-OS	1/4	.56	1/8	29/64	2.10
BTP-40-OS	3/8	.62	1/8	37/64	2.30
BTP-60-OS	1/2	.62	1/8	45/64	2.40

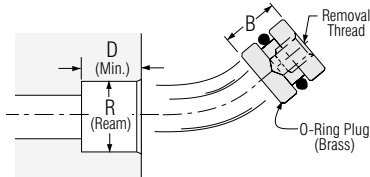
OVERSIZED  
(SEE DRILL SIZE)

## O-Ring Plugs Non-Compression

- O-Ring Plugs are used when backed up by other mold inserts, holder block, etc.
- Requires less space than NPT pipe plugs. Less interference in tight spaces.
- For easy installation, use O-Ring Plug Counterbores.
- Standard Buna O-Ring provides seal to 210°F  
Viton O-Rings and quad rings available.



Threaded brass plugs available. see pages beyond.



Part Number	Nominal Size	Ream Size "R"	"B" (+.000) (-.005)	Min. Depth "D" (+.005) (-.000)	Removal Thread Size	Price Each
OR-06	1/16	.281	1/4	.250	6-32	\$0.85
OR-12	1/8	.375	5/16	.312	10-32	\$0.80
OR-25	1/4	.500	5/16	.312	10-32	\$0.80
OR-38	3/8	.625	7/16	.437	1/4-20	\$1.00
OR-50	1/2	.750	1/2	.500	1/4-20	\$1.25
OR-75	3/4	1.000	5/8	.625	3/8-16	\$1.60
OR-100	1	1.187	5/8	.625	3/8-16	\$2.20

## Stop Plugs

- Stops coolant flow on hoses with flow-thru couplers.
- Prevents accidents by plugging sockets on unused hoses and manifold ports.
- Keeps couplers and seals clean when not in use.



200 Series (1/4" Hole)		
Part Number	Fits Socket Series No.	Price Each
CP-200	200 (1/4" Hole)	\$1.30

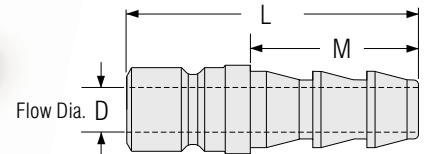
300 Series (3/8" Hole)		
Part Number	Fits Socket Series No.	Price Each
CP-300	300 (3/8" Hole)	\$1.35

500 Series (1/2" Hole)		
Part Number	Fits Socket Series No.	Price Each
CP-500	500 (1/2" Hole)	\$2.50

## Plug to Hose Combination Fittings

ACCEPTS PUSH-LOK HOSES

Eliminates multiple fittings and assembly. Put a Combination Hose Insert on one end of a hose, and a Coupler on the other. Hoses may then be snapped together in series.



- All flow diameters maximized to reduce restrictions.
- For use with Push-Lok or standard hose.

200 Series (1/4" Hole)					
Part No.	Hose I.D.	"D"	"M"	"L"	Price Each
200-4	1/4	3/16	7/8	1-3/8	\$1.35
200-5	5/16	1/4	7/8	1-3/8	1.40
200-6	3/8	1/4	1-1/16	1-9/16	1.55
200-8	1/2	1/4	1-1/16	1-9/16	1.65

300 Series (3/8" Hole)					
Part No.	Hose I.D.	"D"	"M"	"L"	Price Each
300-4	1/4	3/16	7/8	1-13/1	\$1.65
300-5	5/16	1/4	7/8	1-13/1	1.65
300-6	3/8	9/32	1-1/16	1-13/1	1.45
300-8	1/2	11/32	1-1/16	1-13/1	1.45

500 Series (1/2" Hole)					
Part No.	Hose I.D.	"D"	"M"	"L"	Price Each
500-8	1/2	13/32	1-1/16	2	\$2.60
500-12	3/4	9/16	1-1/2	2-1/2	3.45