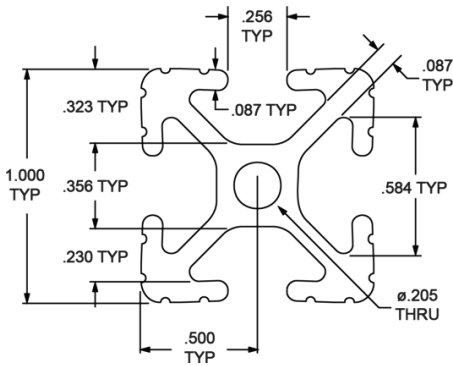




# EXTRUDED ALUMINUM PROFILES

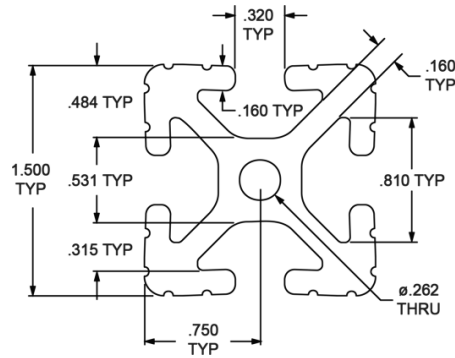
## FOR BUILDING END OF ARM FRAMES

### 10 SERIES

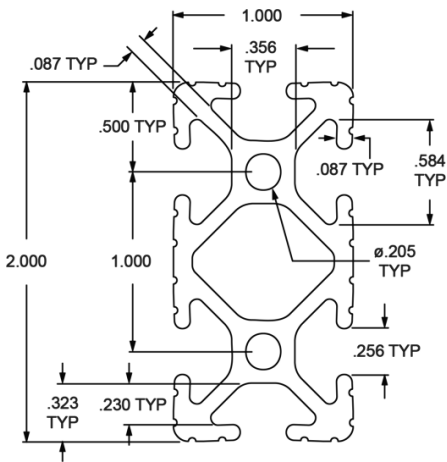


**10 SERIES**  
**4 OPEN T-SLOTS**  
 1" x 1" x 48"  
 .508 lbs/ft  
 Part No. **EXT1010**  
 Price . . . **\$11.89**

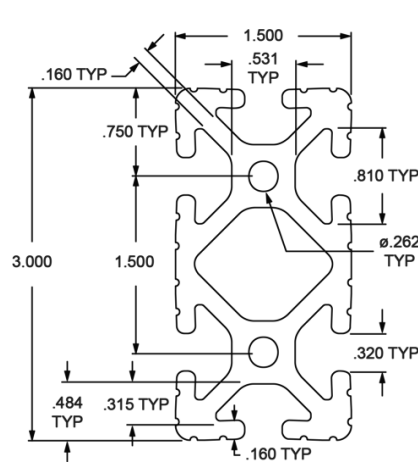
### 15 SERIES



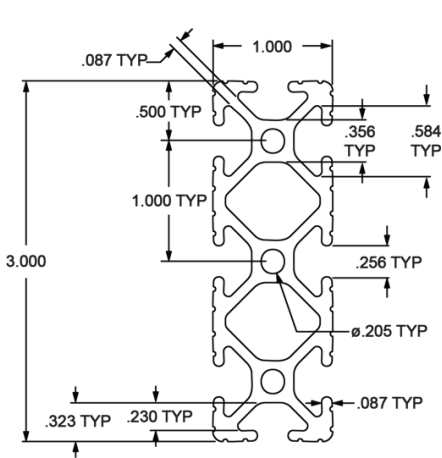
**15 SERIES**  
**4 OPEN T-SLOTS**  
 1.5" x 1.5" x 48"  
 1.342 lbs/ft  
 Part No. **EXT1515**  
 Price . . . **\$27.88**



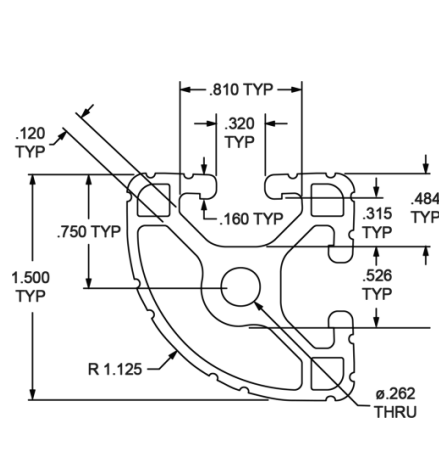
**10 SERIES**  
**6 OPEN T-SLOTS**  
 1" x 2" x 48"  
 .920 lbs/ft  
 Part No. **EXT1020**  
 Price . . . **\$20.31**



**15 SERIES**  
**6 OPEN T-SLOTS**  
 1.5" x 3" x 48"  
 2.420 lbs/ft  
 Part No. **EXT1530**  
 Price . . . **\$48.41**



**10 SERIES**  
**8 OPEN T-SLOTS**  
 1" x 3" x 48"  
 1.348 lbs/ft  
 Part No. **EXT1030**  
 Price . . . **\$29.08**



**15 SERIES**  
**2 OPEN T-SLOTS**  
 1.5" x 1.5" x 48"  
 .978 lbs/ft  
 Part No. **EXT1517**  
 Price . . . **\$20.62**



**5 SIZES AVAILABLE**



## METRIC ALUMINUM TUBING

METRIC ALUMINUM TUBES are ideal for building custom robot end of arm tooling frames. The lightweight 6060-T6 extruded aluminum tubes are available in five (5) different diameters.

PART NO.	DESCRIPTION	WEIGHT Per Foot	PRICE Each Piece
MAT08	8mm O.D. x 1mm Wall Thickness x 36" Long	.664 oz.	\$7.97
MAT10	10mm O.D. x 1mm Wall Thickness x 36" Long	.825 oz.	\$9.42
MAT12	12mm O.D. x 1mm Wall Thickness x 36" Long	.993 oz.	\$10.05
MAT20	20mm O.D. x 1mm Wall Thickness x 36" Long	1.744 oz.	\$16.60
MAT30	30mm O.D. x 1mm Wall Thickness x 36" Long	2.672 oz.	\$43.68