



END OF ARM TOOLING PARTS

FOR ROBOTIC SPRUE PICKERS

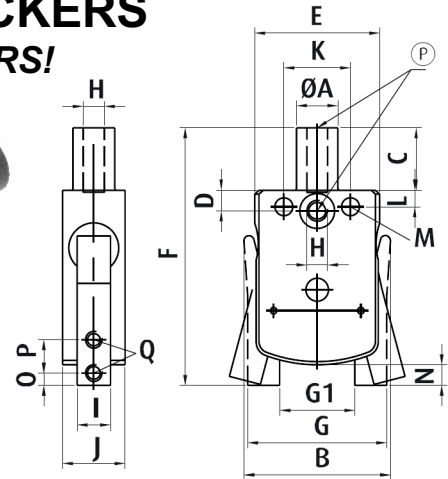
CUSTOMIZE YOUR GRIPPERS!

TOPF103

Replaceable Jaw Gripper

Regular commercially available grippers quickly meet their limits when used to grip sprues and parts with unique shapes. This gripper can be equipped with any of the four jaws shown below. This makes it flexible for gripping any imaginable shape and facilitates the handling of completely different materials using the same gripper. It's small and light weight yet powerful for secure handling. Its simple design ensures high reliability. A second air connection also ensures flexibility when assembling compact gripper systems.

PICK YOUR JAW



TOPF103 Dimensions

A (mm)	B (mm)	C (mm)	D (mm)	E (mm)	F (mm)	G (mm)	G1 (mm)	H (mm)	I (mm)	J (mm)	K (mm)	L (mm)	M (mm)	N (mm)	O (mm)	P (mm)	Q (mm)
10	35	15	5	30	62	33.4	18	M5	8	15	16	4	4.3	5	3	8	M4

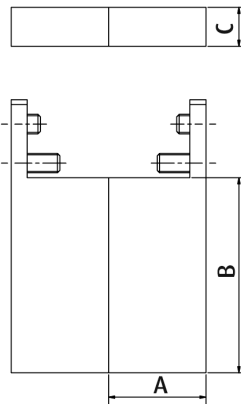
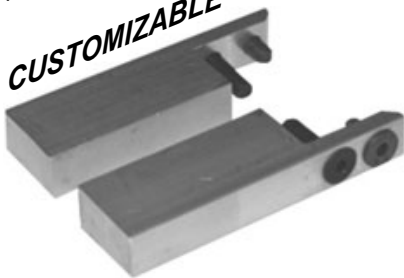
PART NO.	ACTION	SENSOR	CLOSING FORCE (N)	WEIGHT (g)	PRICE
TOPF103	Single	No	*	43	\$148.00

* The closing force depends on the geometry of the special customer-specific jaws.

TOPF103-1 Gripper Jaw

Customize your own shape from aluminum to adapt to your specific application.

CUSTOMIZABLE



Jaw Opening: 34.5mm at tip, 11.5mm at base.

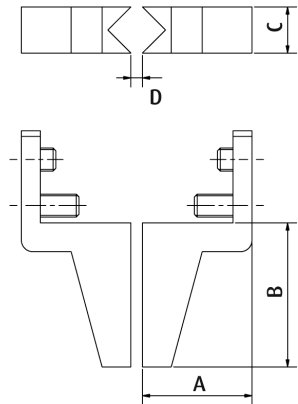
PART NO.	CLOSING FORCE (N)	WEIGHT (g)	A (mm)	B (mm)	C (mm)	PRICE
TOPF103-1	*	40	20	40	8	\$62.00

* The closing force depends on the geometry of the special customer-specific jaws.

TOPF103-2 Gripper Jaw

Grip soft gates or multicomponent systems firmly and securely.

DIAMOND SHAPED NOTCH



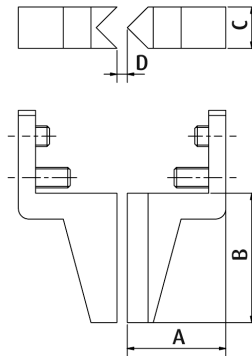
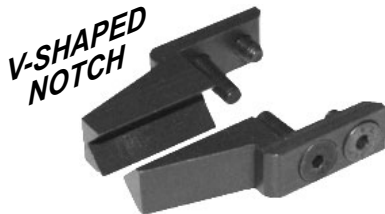
Jaw Opening: 26.5mm at tip, 13.5mm at base.

PART NO.	CLOSING FORCE (N)	WEIGHT (g)	A (mm)	B (mm)	C (mm)	D (mm)	PRICE
TOPF103-2	23	14	19	25	8	2	\$65.00

TOPF103-3 Gripper Jaw

Grip soft gates or multicomponent systems firmly and securely with a V-shaped notch jaw.

V-SHAPED NOTCH



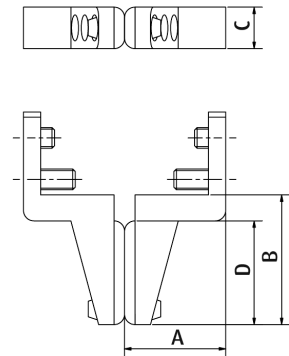
Jaw Opening: 28.5mm at tip, 14.5mm at base.

PART NO.	CLOSING FORCE (N)	WEIGHT (g)	A (mm)	B (mm)	C (mm)	D (mm)	PRICE
TOPF103-3	23	14	19	25	8	2	\$65.00

TOPF103-4 Gripper Jaw

The rubberized gripper jaws with elastomer coating are particularly suitable for delicate gripping of warm or hot parts up to 284°F.

RUBBER PADS



Jaw Opening: 25.5mm at tip, 16mm at base.

PART NO.	CLOSING FORCE (N)	WEIGHT (g)	A (mm)	B (mm)	C (mm)	D (mm)	PRICE
TOPF103-4	23	14	19.5	25	8	20	\$71.60

Spare Silicone Rubber Pads - Part No. SG-106-P . . . \$8.85 pr.



PLASTIC PROCESS EQUIPMENT, INC.

www.ppe.com • e-mail: sales@ppe.com

6385 Montessouri Street, Las Vegas, Nevada 89113
 PPE WEST 702-433-6385 • 800-258-8877 • Fax: 702-433-6388

11218 Challenger Avenue, Odessa, Florida 33556
 PPE SOUTH 727-834-8888 • 800-282-6783 • Fax: 727-834-8873

8303 CORPORATE PARK DRIVE, MACEDONIA (Cleveland), OHIO 44056, USA

Toll Free: USA, Canada & Mexico
800-362-0706

216-367-7000 • Toll Free: 800-321-0562 • Fax: 216-367-7022 • Order Fax: 800-223-8305