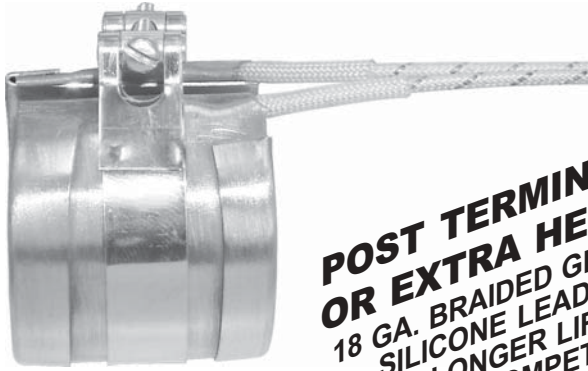


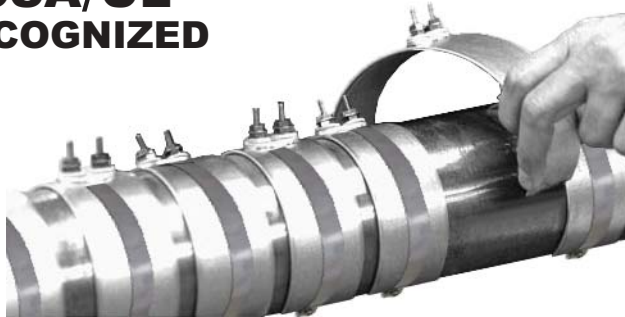


PREMIUM MICA HEATER BANDS & PREMIUM EXPANDABLE★



**POST TERMINALS
OR EXTRA HEAVY
18 GA. BRAIDED GLASS
SILICONE LEADS
FOR LONGER LIFE!
CHECK THE COMPETITION!**

**CSA/UL
RECOGNIZED**



- MADE IN THE USA UNDER STRICT MANUFACTURING SPECIFICATIONS USING ONLY HIGH QUALITY COMPONENTS!
- 1 YEAR GUARANTEE ON QUALITY & WORKMANSHIP OR YOUR MONEY WILL BE REFUNDED IN FULL!
- SPECIAL LOW PROFILE BARREL NUT STRAP WITH SCREWS.
- HIGH QUALITY SHEET MICA INSULATION USED.
- 10" FLEXIBLE LEADS, 10" FLEXIBLE LEADS WITH 8" STAINLESS STEEL BRAID OR POST TERMINALS.
- FLEX LEADS EXIT END OF HEATER BAND WITH EXTRA PROTECTIVE SLEEVE. THIS GIVES YOU MORE HEATED AREA AROUND THE BAND CIRCUMFERENCE.
- ★ EXPANDABLE BANDS ARE SUPPLIED AS STANDARD FOR 4 INCH DIAMETERS AND OVER.

CAUTION: START-UP

Due to moisture contained especially in new heater bands we suggest using a soft start program. This allows the moisture to dissipate gradually limiting ground fault current to a reduced value.

Features (Expandable Bands)

New flexible, one piece design makes installation faster on plastic processing equipment because it can be opened to the full diameter of the barrel without internal damage to the heater. The Expandable heater can be installed on a barrel without removing other band heaters already in place.

INSIDE DIAMETER	WIDTH	VOLTS	WATTS	10" FLEXIBLE LEADS UNLESS NOTED	PART NUMBER	QUANTITY PRICING	
						1-11	12+
3/4"	1"	120	80		MX07515	\$9.90	\$9.40
	1"	240	80		MX07516	\$9.90	\$9.40
7/8"	1"	120	80		MX08717	\$9.90	\$9.45
	1"	240	80		MX08718	\$9.90	\$9.45
	1-1/4"	120	90		MX08719	\$9.90	\$9.45
	1-1/4"	240	90		MX08720	\$9.90	\$9.45
	1-1/2"	120	100		MX08721	\$9.90	\$9.45
	1-1/2"	240	100		MX08722	\$9.90	\$9.45
1"	1"	120	100		MX10001	\$9.90	\$9.45
	1"	240	100		MX10002	\$9.90	\$9.45
	1"	120	100	10" SS	MX10003	\$12.15	\$11.50
	1"	240	100	10" SS	MX10004	\$12.15	\$11.50
	1"	120	125		MX10005	\$9.90	\$9.45
	1"	240	125		MX10006	\$9.90	\$9.45
	1-1/2"	120	150		MX10007	\$9.90	\$9.45
	1-1/2"	240	150		MX10008	\$9.90	\$9.45
	2"	120	200		MX10009	\$10.10	\$9.75
	2"	240	200		MX10010	\$10.10	\$9.75
	2-1/2"	120	250		MX10023	\$11.20	\$10.60
	2-1/2"	240	250		MX10024	\$11.20	\$10.60
	2-1/2"	240	250	36" SS	MX10025	\$22.25	\$21.15
	3"	120	300		MX10011	\$11.05	\$10.50



PLASTIC PROCESS EQUIPMENT, INC.

www.ppe.com • e-mail: sales@ppe.com

PPE WEST 6385 Montessouri Street, Las Vegas, Nevada 89113
702-433-6385 • 800-258-8877 • Fax: 702-433-6388

PPE SOUTH 11218 Challenger Avenue, Odessa, Florida 33556
727-834-8888 • 800-282-6783 • Fax: 727-834-8873

8303 CORPORATE PARK DRIVE, MACEDONIA (Cleveland), OHIO 44056, USA

Toll Free: USA, Canada & Mexico
800-362-0706

216-367-7000 • Toll Free: 800-321-0562 • Fax: 216-367-7022 • Order Fax: 800-223-8305