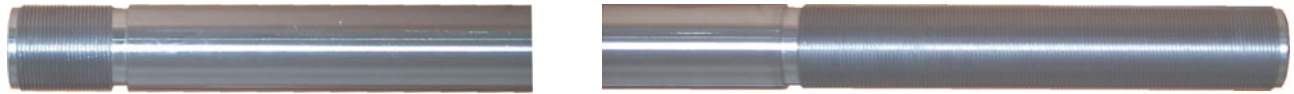




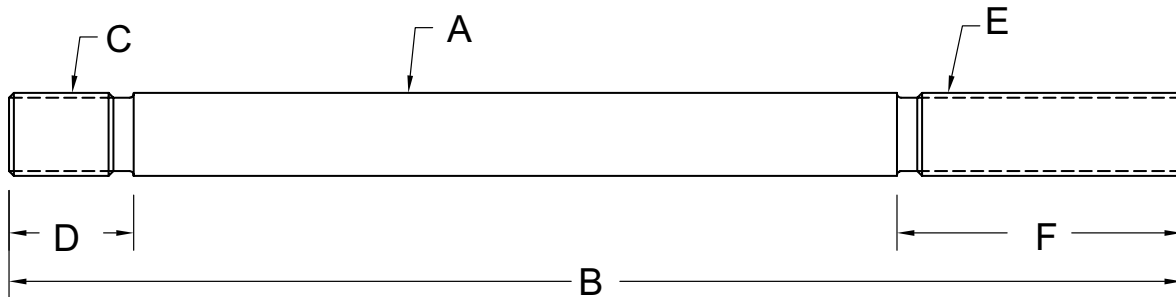
# REPLACEMENT TIE BARS

All PPE Tie Bars are manufactured from premium pre-heat treated stress relieved steel. We will need the following information to provide you with your order or a quotation.



Make of Machine \_\_\_\_\_

Model and Serial Numbers \_\_\_\_\_



A = Outside Diameter: \_\_\_\_\_

B = Overall Length: \_\_\_\_\_

C = Thread Diameter and Pitch: \_\_\_\_\_

D = Thread Length: \_\_\_\_\_

E = Thread Diameter and Pitch: \_\_\_\_\_

F = Thread Length: \_\_\_\_\_

G = Some machines require chrome plated Tie Bars :  YES  NO

Company Name: \_\_\_\_\_

Address: \_\_\_\_\_

City: \_\_\_\_\_ State: \_\_\_\_\_ Zip: \_\_\_\_\_

Your Name: \_\_\_\_\_

Phone Number: \_\_\_\_\_ Fax: \_\_\_\_\_

Note: You may consider replacing all four tie bars if you have a broken one.  
This will prevent uneven stretching.

Fill out and Fax to 800-223-8305

© Copyright 2006 Plastic Process Equipment, Inc.  
Note: PPE customers may reproduce this form only in it's entirety.

www.ppe.com • e-mail: sales@ppe.com

Toll Free: USA, Canada & Mexico  
**800-362-0706**



**PLASTIC PROCESS EQUIPMENT, INC.**

8303 CORPORATE PARK DRIVE, MACEDONIA (Cleveland), OHIO 44056, USA

216-367-7000 • Toll Free: 800-321-0562 • Fax: 216-367-7022 • Order Fax: 800-223-8305

**PPE WEST** 3615 Walnut Avenue, Chino, California 91710, USA  
909-627-8511 • 800-258-8877 • Fax: 909-627-8101

**PPE SOUTH** 11218 Challenger Avenue, Odessa, Florida 33556, USA  
727-834-8888 • 800-282-6783 • Fax: 727-834-8873