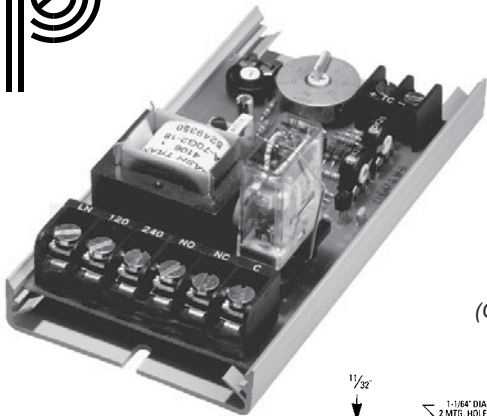




ATHENA SERIES 86 ON-OFF/PROPORTIONAL CONTROL



Remote Setpoint Potentiometer
 (Optional - See Configuration Codes
 "B" & "E" below)

FEATURES

- Superior Replacement for Bulb and Capillary Controls
- On-Off or Proportional Control
- Optional Remote Setpoint
- Limit Controller Option
- TC or RTD Input
- Failsafe in Open Sensor Conditions

SPECIFICATIONS

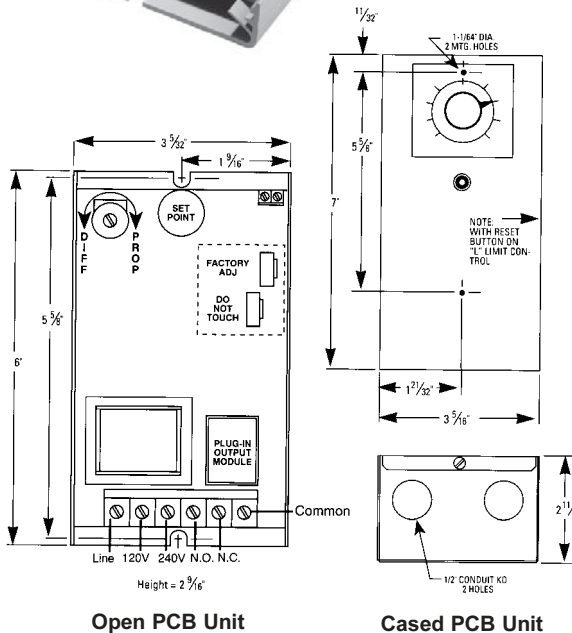
Calibration Accuracy: 1% at calibration points with remote potentiometer. 2% at calibration points, potentiometer on circuit board.
 Ambient Temp Range: 40° to 130°F (4° to 55°C)
 Thermocouple Break Protection:
 Supply Voltage: Output power off with open sensor. 120/240 +/-10%, 50-60Hz



ORDERING INFORMATION



BASE PRICE
\$105.00



Sensor Input Code 2 = RTD 6 = Thermocouple	Price \$85.00 N/C
Configuration Code A = Open PCB unit, setpoint on PCB B = Open PCB unit, remote setpoint C = Cased unit, setpoint on PCB D = Cased unit, setpoint on case E = Cased unit, remote setpoint L = High limit controller, D configuration w/ reset button on case. "B" output only.	Price N/C \$10.00 \$27.00 \$27.00 \$27.00 \$46.00
Output Type Code B = SPDT Relay, 10A S = Pulsed 20 Vdc T = SPST SS Relay, 1A	Price N/C N/C \$5.00

STANDARD RANGE CODE Thermocouple					
Code	Set Range	Min. Divs. (PCB)	Min. Divs. (Remote)	Type	
03F	0 to +300°F	25°	5°	J	
16F	100 to +600°F	25°	5°	J	
08F	0 to +800°F	50°	10°	J	
01F	0 to +1000°F	50°	20°	J	
03C	0 to +300°C	25°	5°	J	
05C	0 to +500°C	25°	10°	J	
51F	500 to +1500°F	50°	20°	K	
02F	0 to +2000°F	100°	40°	K	
01C	0 to +1000°C	50°	20°	K	
T02	-225 to +225°F	25°	10°	T	
RTD Platinum (3-wire, 100 Ohm at 0°C, DIN CURVE STD)					
S01	-100 to +100°C	N/A	4°		
S30	0 to +300°F	25°	5°		
S60	0 to +600°F	50°	10°		

ALL PURPOSE MECHANICAL THERMOSTATS

An extremely accurate, close-differential thermostat with a wide temperature range suitable for commercial and industrial applications. Double-pole single-throw control, using snap-action mechanism for a positive make and break of the circuit. Contacts of pure silver, and the mechanism actuated by a stainless steel diaphragm, electronically welded, a pressed steel case fully encloses the mechanism. The control embodies an ON-OFF switch, and neon pilot light. The snap-on dial is easily removed to make temperature adjustments - thus eliminating any necessity of removing the control from its box. A 3/8 inch pipe-thread bushing for the capillary tube can be furnished for immersion in liquid. Add \$18.00 Part No 494-15-1-1.



PART NO.	RANGE	CAPACITY - WATTS*			DIMENSIONS		PRICE
		120VAC	240VAC	480VAC	BULB	TUBE	
7SPL11	100-550°F	3,600W	7,200W	10,000W	3/8" x 3-7/8"	48"	\$186.00
5SPL11	60-250°F	3,600W	7,200W	10,000W	3/8" x 4-1/2"	48"	\$186.00

*Ambient temperature not over 150F.

CLAMP-ON THERMOSTAT

The RG Clamp-On type thermostat for controlling the temperature of solid objects to which it can be clamped. Contacts are opened and closed by expansion and contraction of base plate and resulting vertical movement of the specially-formed, low-expansion thermal spring. Convenient knob-operated lever provides manual adjustment of the circuit-breaking point.



PART NO.	RANGE	CAPACITY RATINGS			DIMENSIONS			PRICE
		Volts	Watts	Differential	Width	Height	Length	
B-200	100-550°F	230	1,500	+/-5°F	.750"	1.750"	2.885"	\$27.50



PLASTIC PROCESS EQUIPMENT, INC.

8303 CORPORATE PARK DRIVE, MACEDONIA (Cleveland), OHIO 44056, USA
 216-367-7000 • Toll Free: 800-321-0562 • Fax: 216-367-7022 • Order Fax: 800-223-8305

www.ppe.com • e-mail: sales@ppe.com

Toll Free: USA, Canada & Mexico
800-362-0706

PPE WEST 3615 Walnut Avenue, Chino, California 91710, USA
 909-627-8511 • 800-258-8877 • Fax: 909-627-8101

PPE SOUTH 11218 Challenger Avenue, Odessa, Florida 33556, USA
 727-834-8888 • 800-282-6783 • Fax: 727-834-8873