



PC HEAVY DUTY CONVEYOR

SPECIFICATIONS AND PRICES

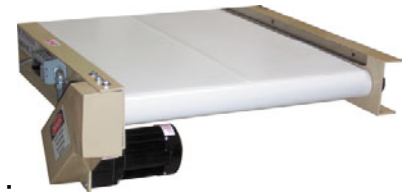


OPTIONAL:

Variable Speed Control Factory Installed Only,
0-54 FPM, SCR Control, 1/4 H.P. D.C. Motor.
Price add \$125.00

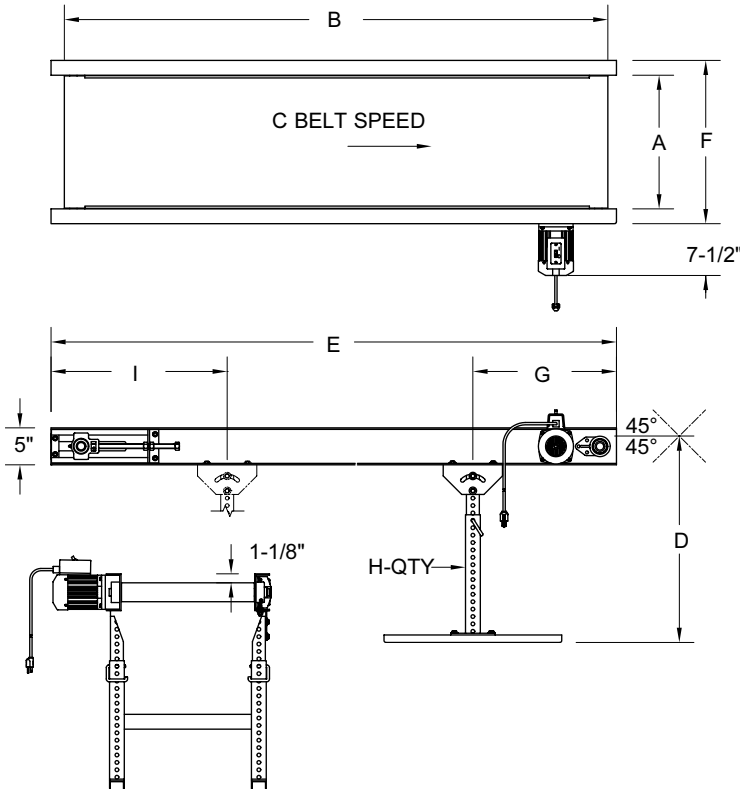
★ Variable Speed Control Factory Installed Only,
0-54 FPM, SCR Control, 1/2 H.P. T.E.F.C.
Right Angle Gearbox D.C. Motor.
Price add \$415.00

Add "VS" to conveyor model number.



OPTIONAL:

Motor mounted under conveyor.
Price add \$100.00
Add "MU" to conveyor model number.



Model No.	A Belt Width In.	B Nominal Belt Length	C Belt Speed Ft./Min.	D Height to Top of Belt		E Length Overall In.	F Frame Width In.	G In.	H Qty. of Stands	I In.	Approx. Shipping Weight Lbs.	Prices
				Max.	Min.							
12" Wide Models	PC-124	4'	18.3	41"	29"	52"	17"	19"	1	-	143	\$1,587.00
	PC-125	5'	18.3	41"	29"	64"	17"	25-1/4"	1	-	164	1,627.00
	PC-126	6'	18.3	41"	29"	76"	17"	31"	1	-	185	1,658.00
	PC-127	7'	18.3	41"	29"	88"	17"	37"	1	-	206	1,706.00
	PC-128	8'	18.3	41"	29"	100"	17"	23"	2	24"	233	1,886.00
	PC-1210	10'	18.3	41"	29"	124"	17"	23"	2	36"	255	2,008.00
PC-1212	12'	18.3	41"	29"	148"	17"	23"	2	48"	277	2,093.00	
18" Wide Models	PC-184	4'	18.3	41"	29"	52"	23"	19"	1	-	150	1,453.00
	PC-185	5'	18.3	41"	29"	64"	23"	25-1/4"	1	-	175	1,511.00
	PC-186	6'	18.3	41"	29"	76"	23"	31"	1	-	200	1,547.00
	PC-187	7'	18.3	41"	29"	88"	23"	37"	1	-	240	1,603.00
	PC-188	8'	18.3	41"	29"	100"	23"	23"	2	24"	271	1,790.00
	PC-1810	10'	18.3	41"	29"	124"	23"	23"	2	36"	311	1,938.00
PC-1812	12'	18.3	41"	29"	148"	23"	23"	2	48"	350	2,046.00	
★PC-1815	15'	19	41"	29"	184"	23"	23"	2	60"	408	2,311.00	
★PC-1820	20'	19	41"	29"	244"	23"	23"	3	60"	506	2,538.00	
24" Wide Models	PC-245	5'	18.3	41"	29"	64"	29"	25-1/4"	1	-	186	1,593.00
	PC-246	6'	18.3	41"	29"	76"	29"	31"	1	-	241	1,654.00
	PC-247	7'	18.3	41"	29"	88"	29"	37"	1	-	296	1,710.00
	PC-248	8'	18.3	41"	29"	100"	29"	23"	2	24"	375	1,905.00
	PC-2410	10'	18.3	41"	29"	124"	29"	23"	2	36"	468	2,072.00
	★PC-2412	12'	19	41"	29"	148"	29"	23"	2	48"	561	2,200.00
★PC-2415	15'	19	41"	29"	184"	29"	23"	2	60"	702	2,343.00	

★ LONGER UNITS SUPPLIED WITH A 1/2 H.P. T.E.F.C. RIGHT ANGLE GEARBOX MOTOR. SEE EXTRA WIDE MODELS FOR PICTURE.
STANDARD STEEL SIDE RAILS WITH END BRACE, UP TO 8 FT. LONG x 3 1/2" HIGH\$102.00
STAINLESS STEEL SIDE RAILS WITH END BRACE, UP TO 8 FT. LONG x 3 1/2" HIGH.....\$150.00

MOLDED-ON CLEAT PRICES NOTE: CLEATS ARE INDENTED 1/2" FROM EACH SIDE OF CONVEYOR BELT.	HEIGHT	6" WIDE	12" WIDE	18" WIDE	24" WIDE
	3/4"	5.62 ea.	11.15 ea.	16.73 ea.	22.31 ea.
	1"	5.62 ea.	11.15 ea.	16.73 ea.	22.31 ea.
	1-1/2"	6.00 ea.	12.00 ea.	18.00 ea.	24.00 ea.
	2"	6.00 ea.	12.00 ea.	18.00 ea.	24.00 ea.